

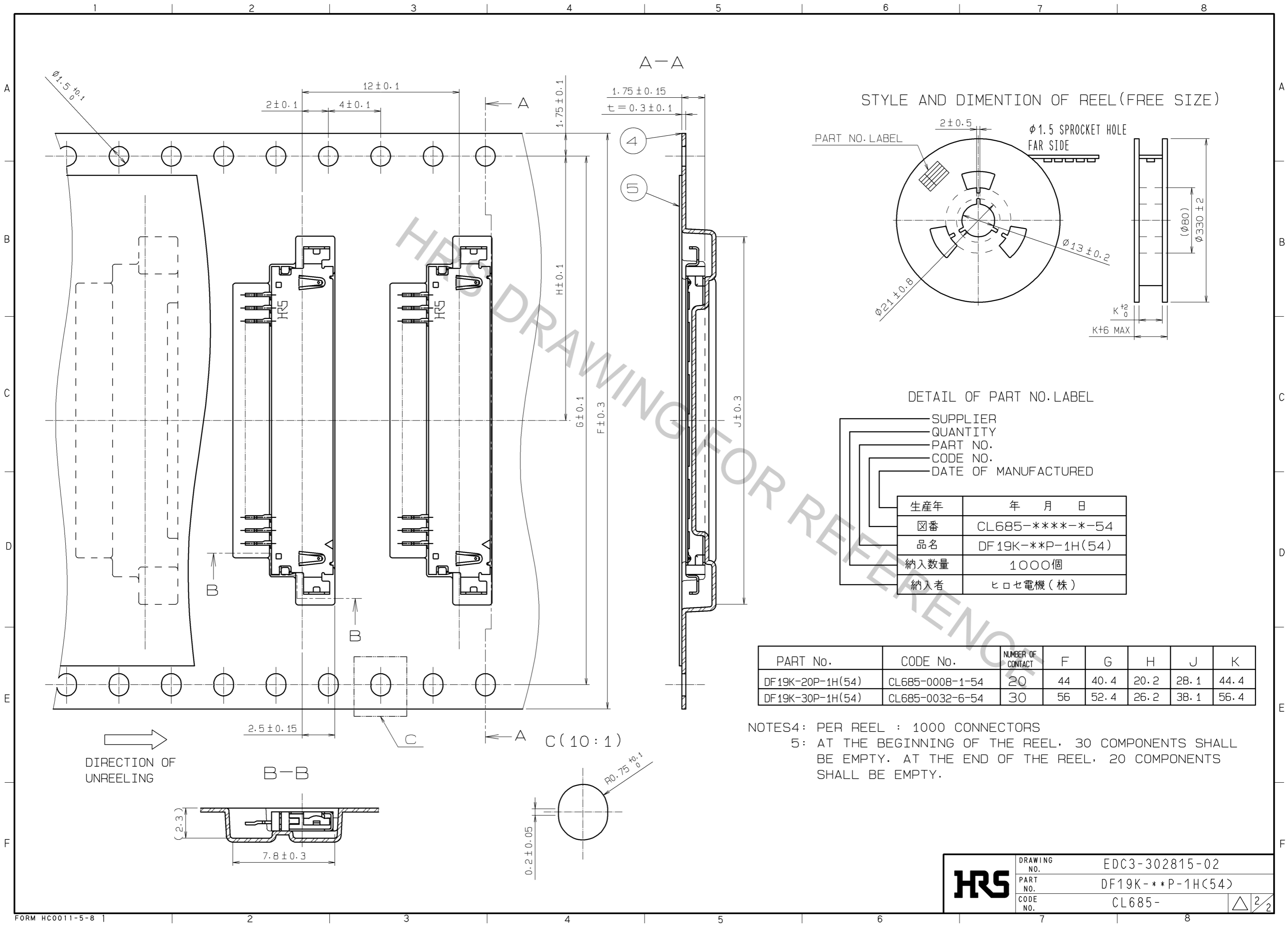
PART No.	CODE No.	NUMBER OF CONTACT	A	B	C	D	E
DF19K-20P-1H(54)	CL685-0008-1-54	20	23.55	19	26.55	24.15	25.15
DF19K-30P-1H(54)	CL685-0032-6-54	30	33.55	29	36.55	34.15	35.15

NOTES1: LEAD CO-PLANARITY SHALL BE 0.1 mm MAX.
 2) RECOMMENDED THICKNESS OF CREAM SOLDER PASTE: 0.15mm
 OPEN AREA RATIO: 100%

NO.	MATERIAL	FINISH, REMARKS	NO.	MATERIAL	FINISH, REMARKS
2	PHOSPHER BRONZE	LEAD AREA:TIN PLATED 1#m min UNDER PLATING:NICKEL PLATED 0.5#m min	3	PHOSPHER BRONZE	LEAD AREA:TIN-COPPER PLATED 1#m min UNDER PLATING:NICKEL PLATED 1#m min
1	POLYAMIDE	BLACK, UL94V-0	4	PS	CLEAR, (EMBOSSD CARRIER TAPE)
			5	POLYESTER	CLEAR, (COVER TAPE)

UNITS	SCALE	COUNT	DESCRIPTION OF REVISIONS	DESIGNED	CHECKED	DATE
mm	5 : 1	△	APPROVED : TS. SAKATA 09.03.02			
			CHECKED : TS. KUMAZAWA 09.03.02			
			DESIGNED : SN. KOBAYASHI 09.02.27			
			DRAWN : SN. KOBAYASHI 09.02.27			

DRAWING NO.	PART NO.	CODE NO.
EDC3-302815-02	DF19K-***P-1H(54)	CL685-



HRS	DRAWING NO.	EDC3-302815-02
	PART NO.	DF19K-**P-1H(54)
	CODE NO.	CL685-