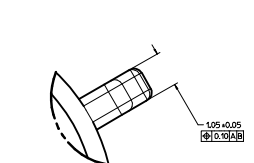
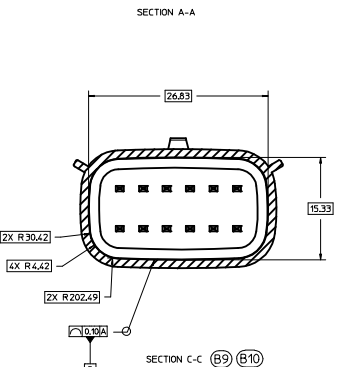
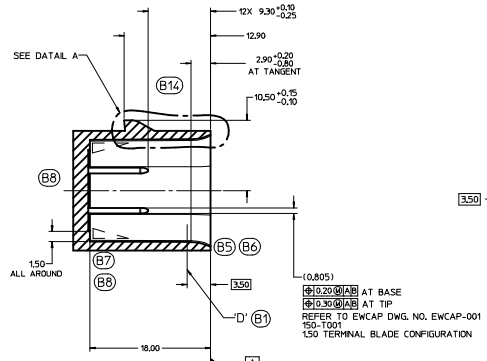
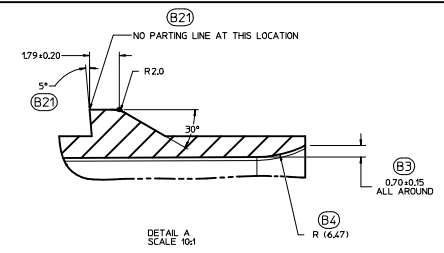
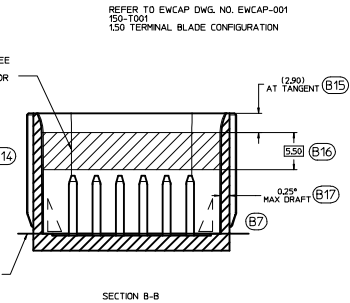
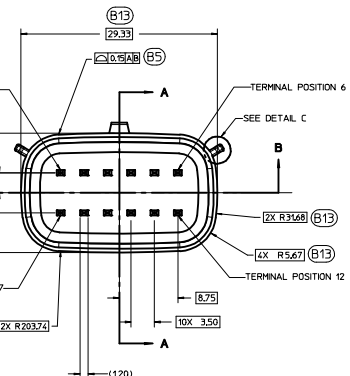
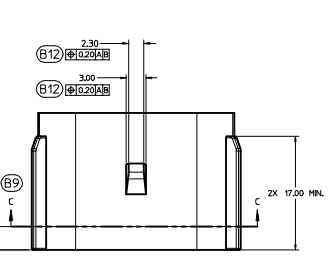
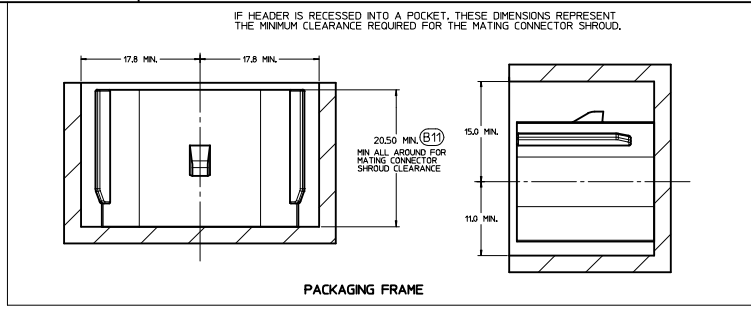


150-S-012-2-D01	D	BLACK
150-S-012-2-C01	C	DK GRAY
150-S-012-2-B01	B	LT GRAY
150-S-012-2-A01	A	BLACK
EWCAP P/N	OPTION	MATING CONNECTOR COLOR



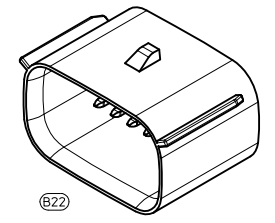
CONSTRUCTION BELOW THIS SURFACE IS NOT CONTROLLED BY EWCAP. NO PLASTIC FEATURES MAY EXTEND ABOVE THIS SURFACE.



IF HEADER IS RECESSED INTO A POCKET, THESE DIMENSIONS REPRESENT THE MINIMUM CLEARANCE REQUIRED FOR THE MATING CONNECTOR SHROUD.

NOTICE  
THIS DRAWING OR PORTIONS OF IT, ARE CONTROLLED BY THE ELECTRICAL WIRING COMPONENTS APPLICATION PARTNERSHIP (EWCAP), A SUBGROUP OF THE UNITED STATES CONSORTIUM FOR AUTOMOTIVE RESEARCH (USCAR), USCAR IS A PARTNERSHIP BETWEEN CHRYSLER GROUP LLC, FORD MOTOR COMPANY, AND GENERAL MOTORS CORPORATION ANY CHANGE TO A EWCAP CONTROLLED PORTION OF THIS DRAWING, INCLUDING A REVISION CHANGE, MUST BE APPROVED, IN WRITING, BY THE RESPONSIBLE EWCAP MEMBER FROM EACH USCAR COMPANY. EACH EWCAP MEMBER AUTHORIZED TO SIGN FOR HIS OR HER COMPANY IS RESPONSIBLE FOR OBTAINING ALL NECESSARY APPROVALS WITHIN THAT COMPANY PRIOR TO SIGNING FOR APPROVAL OF THE CHANGE. EWCAP EXPRESSLY PROHIBITS ANY PARTY FROM CHANGING OR ANY ASSOCIATED TOOLING BEFORE RECEIVING AN APPROVAL SIGNED BY AN AUTHORIZED REPRESENTATIVE FROM EACH EWCAP PARTNER. REFERENCE TO THE SIGNED APPROVAL FORM MUST BE ENTERED IN THIS DRAWING'S CONTROL COLUMN.

- NOTES: UNLESS OTHERWISE SPECIFIED (B18)
- ALL DIMENSIONS SHOWN IN MILLIMETERS.
  - DIMENSIONING AND TOLERANCING PER ASME Y14.5M-1994
  - 0.25 RADI ON ALL CORNERS SHOWN SHARP.
  - UNSPECIFIED RADI: 0.25 EXCEPT AS NOTED.
  - STANDARD COLORS FOR POLARIZATION (SEE CHART). DEVIATION REQUIRES APPROVAL OF AUTHORIZED PERSON.
  - REFER TO "SAE/USCAR 12 CONNECTOR GUIDELINES" FOR ADDITIONAL REQUIREMENTS.
  - EXCEPT WHERE NOTED, DRAFT ON OUTSIDE SURFACES IS PERMISSIBLE WITH TOLERANCE.
  - Symbol indicates DRAFT DIRECTION.
  - FOR TERMINAL MATERIAL, DIMENSIONAL, AND COATING REQUIREMENTS AND ANY BLADE TERMINAL DESIGN INFORMATION NOT SHOWN ON THIS DRAWING SEE EWCAP DPM, NO. EWCAP-001
  - A FULL SHROUD ON THE MATING CONNECTOR IS REQUIRED TO INSURE THAT THE CONNECTOR-HEADER POLARIZATION FEATURES OPTIONS A THRU D WILL FUNCTION THE FULL SHROUD ALSO PREVENTS SCOOP DAMAGE TO THE HEADER PINS. REFER TO "SAE/USCAR-12 CONNECTOR DESIGN GUIDE LINES" FOR ADDITIONAL INFORMATION.
  - REFER TO USCAR/EWCAP PART LIST AS FOUND ON WEBSITE <http://www.uscar12.com>
  - THIS IS A 100% CAD GENERATED PART. THE CAD MATHEMATICAL DATA IS THE MASTER FOR THIS PART. FOR DIMENSIONAL OR ANY INFORMATION NOT SHOWN ON THIS DRAWING, ANALYZE THE CAD MODEL.

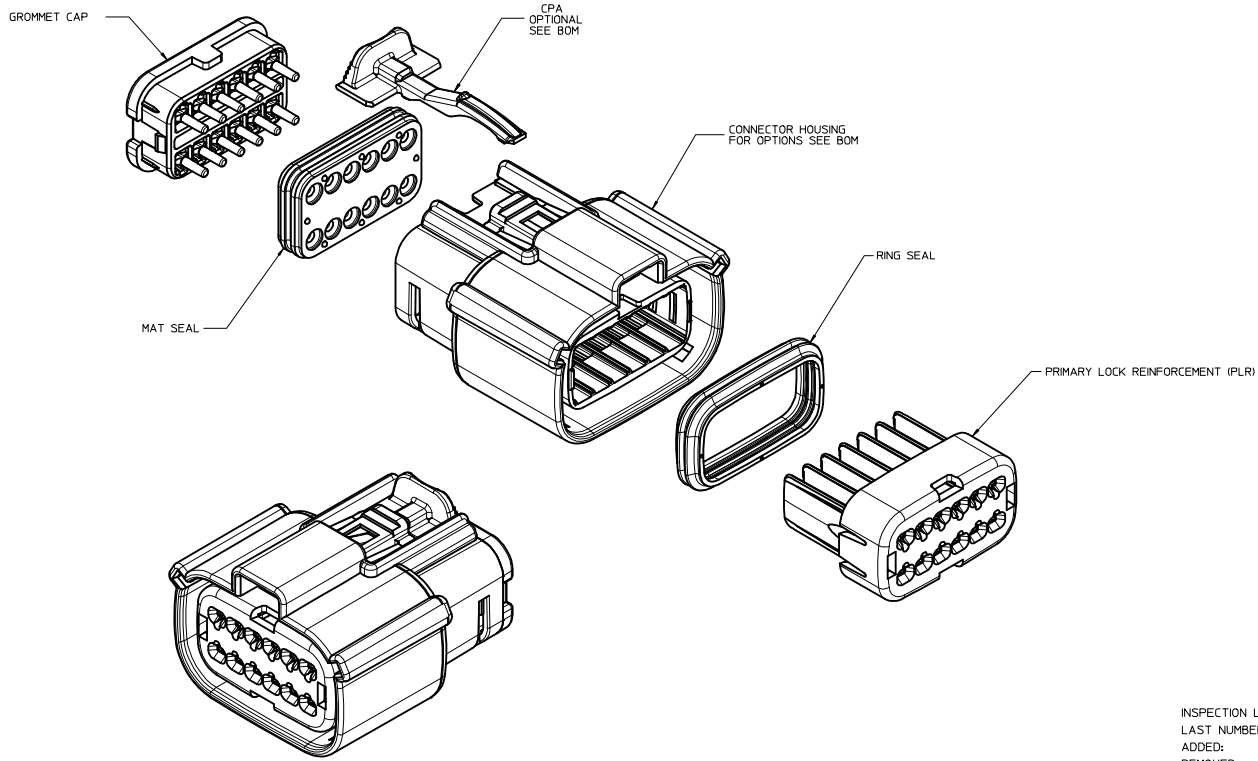


095	B22	CHANGED ISO VIEW SCALE TO 4:1 WAS '11							
095	B21	ADDED PARTING LINE NOTE TO DETAIL A. ALL DIMENSIONS ARE IN MILLIMETERS							
095	B20	REVISED NOTE BACK ANGLE OPTIONAL FROM 5°							
095	B19	CORRECTED CHRYSLER GROUP LLC NOMENCLATURE							
095	B19	MOVED NOTE TO SECTION B-B							
095	B18	UPDATED NOTES							
095	B17	ADDED 0.25° MAX DRAFT ANGLE ALL AROUND							
095	B16	ADDED 15.50							
095	B15	ADDED AT TANGENT NOTE							
095	B14	REMOVED DATUM D							
095	B13	ADDED BASIC DIMENSIONS FOR PROFILE CONTROL.							
095	B12	ADDED 0.10±0.015							
095	B11	DIMENSIONED TO DATUM A							
095	B10	SEALING SURFACE DIMENSIONS MOVED TO SECTION C-C							
095	B9	ADDED SECTION C-C							
095	B8	REMOVED 0.25 AND 2.50 FROM SECTION A-A							
095	B7	ADDED DRAFT ANGLE DIRECTION							
095	B6	REMOVED 0.80 ±0.00±0.20 ALL AROUND							
095	B5	REVISED WALL THICKNESS CONTROL WITH PROFILE OF A SURFACE							
095	B4	ADDED R16.47							
095	B3	ADDED 0.70 ±0.15 ALL AROUND							
095	B2	UPDATED CONNECTOR COLORS							
095	B1	SURFACE 17 RELOCATED TO 15.50 WAS AT B20							
095	A	RELEASED	10-31-02	03-21-12	KC	DG	JK		
LET		REVISION RECORD	DATE	DWN	CHK				
TOLERANCES UNLESS OTHERWISE SPECIFIED									
DIMENSIONS ARE IN MILLIMETERS									
ANGLES ±3°									
SURFACE FINISH									
1000 ANGLE PRELECTION									
EWCAP									
SCALE	4 - 1	DRAWN BY	R.CUNNINGHAM	DESIGNED BY	M.VANSLAMBROUCK	DATE	03-21-12		
TITLE DIRECT CONNECT INTERFACE									
12 WAY (2 X 6) 1.5MM SEALED MALE									
SHEET	1 OF 1	DRWG NUMBER	150-S-012-2-Z01	REV	E	DO NOT SCALE DRAWING	CONTRACT AND DRAWING	REVISION LEVEL	B



**TABLE OF CONTENTS**

SHEET NO.	SHEET DESCRIPTION
1	NOTES
2	KEY CONFIGURATIONS
3	RECEPTACLE SEALED ASSEMBLY
4	BACKSHELL NOTES
5	BACKSHELL
6	BACKSHELL CONFIGURATIONS
7-9	BOM



NOTES: VALID UNLESS OTHERWISE SPECIFIED

1. GENERAL:
  - a. APPLICATION SPECIFICATION SEE: AS-33472-100  
 -CONTAINS: PRODUCT INTRODUCTION, PRODUCT SUMMARY, CONNECTOR ASSEMBLY, PACKAGING INFORMATION, CONNECTOR MATING, SERVICE INSTRUCTIONS, ELECTRICAL CONTINUITY CHECKING, CRIMPING, AND TROUBLESHOOTING.  
 -DESIGNED TO MATE WITH DEVICE CONNECTION AS SPECIFIED IN DRAWING EWCAP 150-S-012-2-201, AVAILABLE AT <http://ewcap.uscar.tecma.org/>.  
 -DESIGNED TO MATE WITH BLADE SEALED ASSEMBLY AS SPECIFIED IN DRAWING SD-33482-121  
 -FOR 1.5mm RECEPTACLE TERMINALS TO BE USED WITH THIS ASSEMBLY, SEE MOLEX DRAWING SD-33012-002.  
 -SYSTEM TO BE USED WITH WIRE WITHIN DIAMETER RANGE OF 12 mm TO 2.69 mm.  
 -ASSEMBLY SHIPPED WITH PLR AND CPA IN PRE-LOCK POSITION (SEE SECTION Z-Z PRE-LOCK).  
 -IN THE EVENT THAT THE PLR IS FOUND IN THE SEATED (FINAL LOCK) POSITION, REFER TO MOLEX SPECIFICATION PS-34646-001, AVAILABLE AT [www.molex.com](http://www.molex.com) <http://www.molex.com>.  
 -ASSEMBLY CONFORMS TO SAE/USCAR-2 REV.4 WITH THE FOLLOWING EXCEPTIONS: ENGAGEMENT FORCE TO MOVE CPA FROM PRE-LOCK TO FINAL LOCK POSITION WHEN UNMATED: 40N MIN. DISENGAGEMENT FORCE TO MOVE CPA FROM FINAL LOCK TO PRE-LOCK POSITION: 3N MIN, 40N MAX. TERMINAL INSERTION FORCE FOR WIRE DIAMETER ABOVE 2.5mm NOT EXCEEDING 2.69mm SHALL NOT EXCEED 40 NEWTONS.
  - b. PRODUCT SPECIFICATION SEE: PS-33472-000  
 CONTAINS: PRODUCT INTRODUCTION, PRODUCT SUMMARY, RATINGS (CURRENT, TEMPERATURE, SEALING, AND FLAMMABILITY), AND PRODUCT VALIDATION.
  - c. PACKAGING SPECIFICATION PER MOLEX DRAWING: PK-31300-903  
 d. PARTS MUST BE IN COMPLIANCE TO MOLEX CHEMICAL SUBSTANCES FOR PRODUCTS AND PACKAGING SPECIFICATION ES-40000-5016
  - e. DATA MUST BE SUBMITTED UNDER THE MOLEX PART NUMBER TO IMDS (COMPANY ID#13255)
  - f. FOR INFORMATION ON 2X6 RECEPTACLE SEALED ASSEMBLY WITH CLIP/SLOT SEE SD-33472-131
2. DESIGN - MATERIALS:
  - a. SEE BOM TABLE
3. DESIGN - GEOMETRY:
  - a. THIS IS A 100% CAD GENERATED PART. THE CAD MATHEMATICAL DATA IS THE MASTER FOR THIS PART. FOR DIMENSIONAL OR ANY INFORMATION NOT SHOWN ON THIS DRAWING, ANALYZE THE CAD MODEL.
  - b. GEOMETRIC DIMENSIONS AND TOLERANCES PER ASME Y14.5M - 1994
  - c. EDGES AND UNDIMENSIONED DETAILS PER ISO13715
  - d. CORNERS SHOWN AS SHARP TO BE R 0.2 MAX.
  - e. LETTERING SHALL BE 0.5 MAX RAISED IN 0.25 MAX RECESS PAD. THIS INCLUDES RECYCLING CODE, CAVITY ID, VENDOR IDENTIFICATION, AND CUSTOMER MATERIAL NUMBER.
  - f. VISUAL DEFECTS SHALL MEET COSMETIC STANDARD PS-45499-002 (Class B).
  - g. LASER MARKING: TBD

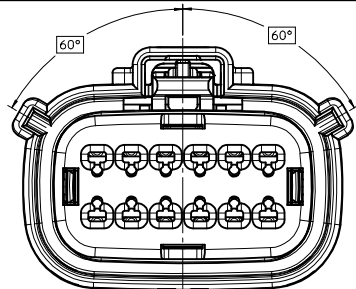
INSPECTION LOG  
 LAST NUMBER USED:  
 ADDED:  
 REMOVED:

T5	RENAMED BACKSHELLS
T4	ADD NEW P/N 33472-1283 33472-1284 33472-1285
T3	ADDED CPA CALL OUT TO P/N 33472-1282
T2	ADD NEW P/N 33472-1282
T1	ADDED BACKSHELLS
T	ADD NEW P/N 33472-1281
S	ADD NEW P/N 33472-1279 33472-1280
R	ADD NEW P/N 33472-1278
O	REDRAWN
REV	DESCRIPTION

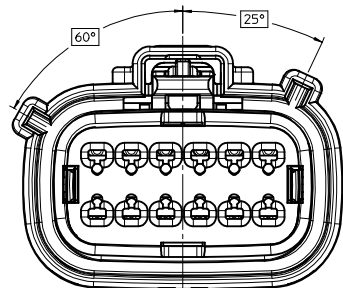
<b>ENTER DESCRIPTION</b> DEC NO: UAU2013-1404 DRWNG: DAHALL CHYD: 2013/03/06 APPROV: C. LISLE DESCRIPTION: 2013/03/07	QUALITY SYMBOLS ∇=0 ∇=0 ∇=0	GENERAL TOLERANCES (UNLESS SPECIFIED): mm INCH 4 PLACES ±.000 ±.000 3 PLACES ±.010 ±.000 2 PLACES ±.030 ±.000 1 PLACE ±.075 ±.000 0 PLACE ±.150 ±.000	DIMENSION STYLE MM ONLY DRAWN BY: D. MARCOUX DATE: 06-13-02 CHECKED BY: D. GRIFFITHS DATE: 06-13-02 APPROVED BY: F. HOLUB DATE: 06-13-02	TITLE MX150 2X6 RECEPTACLE SEALED ASSEMBLY MAT SEAL
	MATERIAL NO: SEE BOM	DOCUMENT NO: SD-33472-121	SHEET NO: 1 OF 9	

**molex**  
 THIS DRAWING CONTAINS INFORMATION THAT IS PROPRIETARY TO MOLEX INCORPORATED AND SHOULD NOT BE USED WITHOUT WRITTEN PERMISSION

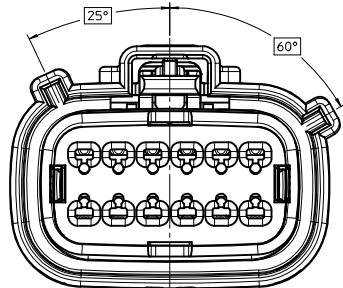
KEY CONFIGURATIONS



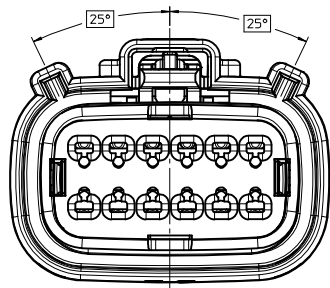
KEY A



KEY B



KEY C



KEY D

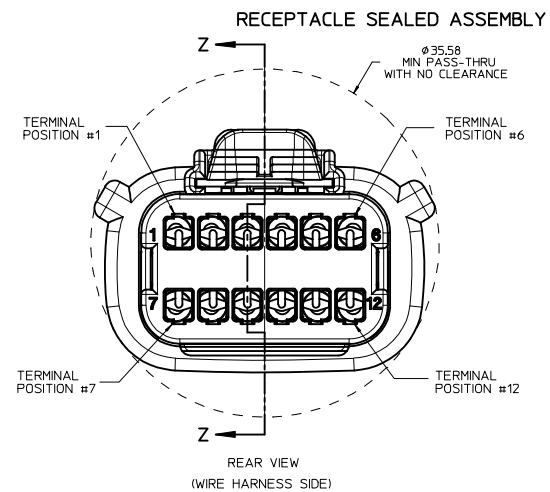
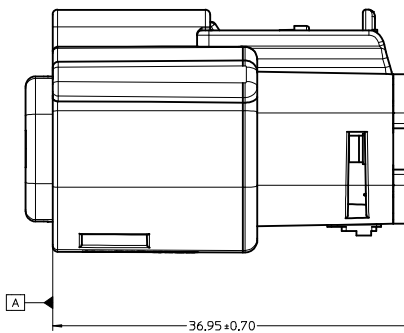
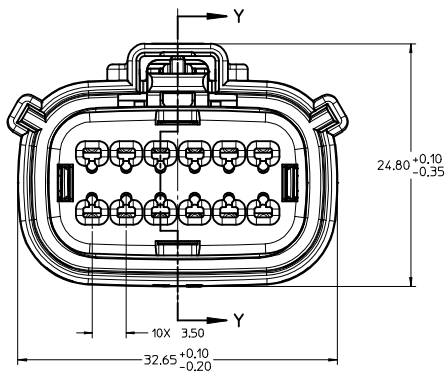
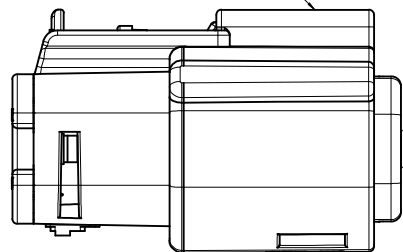
<b>ENTER DESCRIPTION</b> DEC NO: UAU2013-1404 DRAWN BY: DRWNGHALL CHYK: 2013/03/06 APPROV: LLSLE APPR: DC LLSLE 2013/03/07	<b>QUALITY SYMBOLS</b> ∇=0 ∇=0 ∇=0	<b>GENERAL TOLERANCES (UNLESS SPECIFIED)</b>		<b>DIMENSION STYLE</b> MM ONLY	SCALE 4:1	DESIGN UNITS METRIC	THIRD ANGLE PROJECTION	
		4 PLACES ± --- ± ---	mm	INCH	DRAWN BY D. MARCOUX	DATE 06-13-02	TITLE MX150 2X6 RECEPTACLE SEALED ASSEMBLY MAT SEAL	
		3 PLACES ± --- ± ---	± 0.10	± ---	CHECKED BY D. GRIFFITHS	DATE 06-13-02	MATERIAL NO. SEE BOM	
		2 PLACES ± 0.10 ± ---	± 0.3	± ---	APPROVED BY F. HOLUB	DATE 06-13-02	DOCUMENT NO. SD-33472-121	SHEET NO. 2 OF 9

ANGULAR ± 3 °  
 DRAFT WHERE APPLICABLE  
 MUST REMAIN WITHIN DIMENSIONS

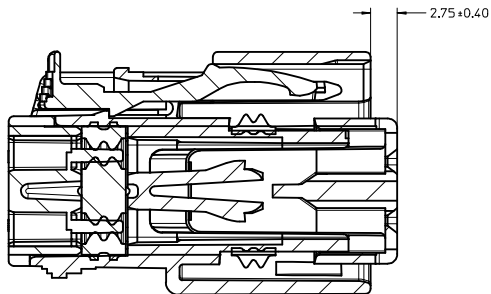
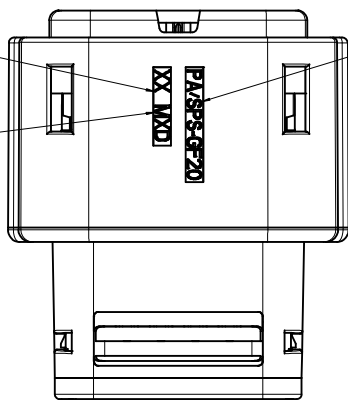
SIZE D

THIS DRAWING CONTAINS INFORMATION THAT IS PROPRIETARY TO MOLEX INCORPORATED AND SHOULD NOT BE USED WITHOUT WRITTEN PERMISSION

LASER MARKING ON THIS SURFACE  
SEE NOTE 3g.

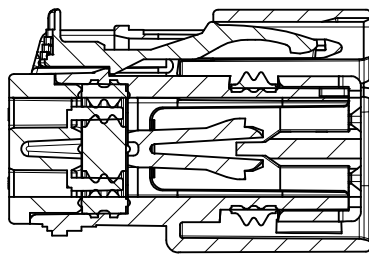


MOLD CAVITY CODE  
LOCATION CODE  
RECYCLE CODE



PRIMARY LOCK REINFORCEMENT (PLR) SHOWN  
IN PRE-STAGE POSITION

SECTION Z-Z

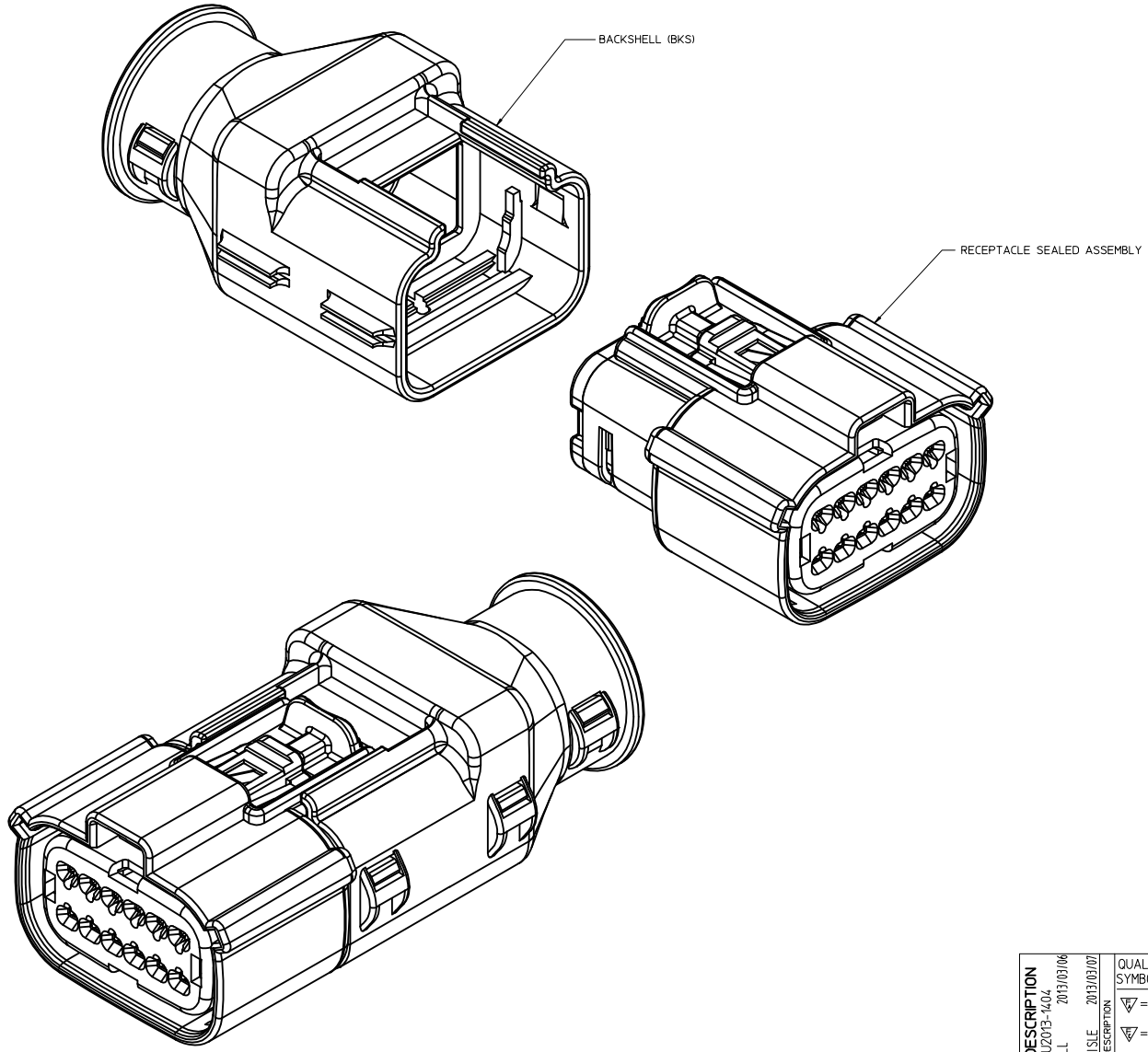


PRIMARY LOCK REINFORCEMENT (PLR) SHOWN  
IN FINAL-LOCK POSITION

SECTION Y-Y

<b>ENTER DESCRIPTION</b> IEC NO: UAU2013-1404 DRAWN BY: DRWNGRHALL CHKD: APPR:DC LLSLE 2013/03/06 2013/03/07	QUALITY SYMBOLS	GENERAL TOLERANCES (UNLESS SPECIFIED)	DIMENSION STYLE	SCALE	DESIGN UNITS	THIRD ANGLE PROJECTION	
	∇=0 ∇=0 ∇=0	mm INCH 4 PLACES ± --- ± --- 3 PLACES ± --- ± --- 2 PLACES ± 0.10 ± --- 1 PLACE ± 0.3 ± --- 0 PLACE ± ±	MM ONLY	4:1	METRIC	DRAWN BY: D. MARCOUX DATE: 06-13-02 CHECKED BY: D. GRIFFITHS DATE: 06-13-02 APPROVED BY: F. HOLUB DATE: 06-13-02	TITLE: MX150 2X6 RECEPTACLE SEALED ASSEMBLY MAT SEAL molex DOCUMENT NO: SD-33472-121
	ANGULAR ± 3 ° DRAFT WHERE APPLICABLE MUST REMAIN WITHIN DIMENSIONS	MATERIAL NO.	SIZE	SHEET NO. 3 OF 9			
	THIS DRAWING CONTAINS INFORMATION THAT IS PROPRIETARY TO MOLEX INCORPORATED AND SHOULD NOT BE USED WITHOUT WRITTEN PERMISSION						

BACKSHELL NOTES



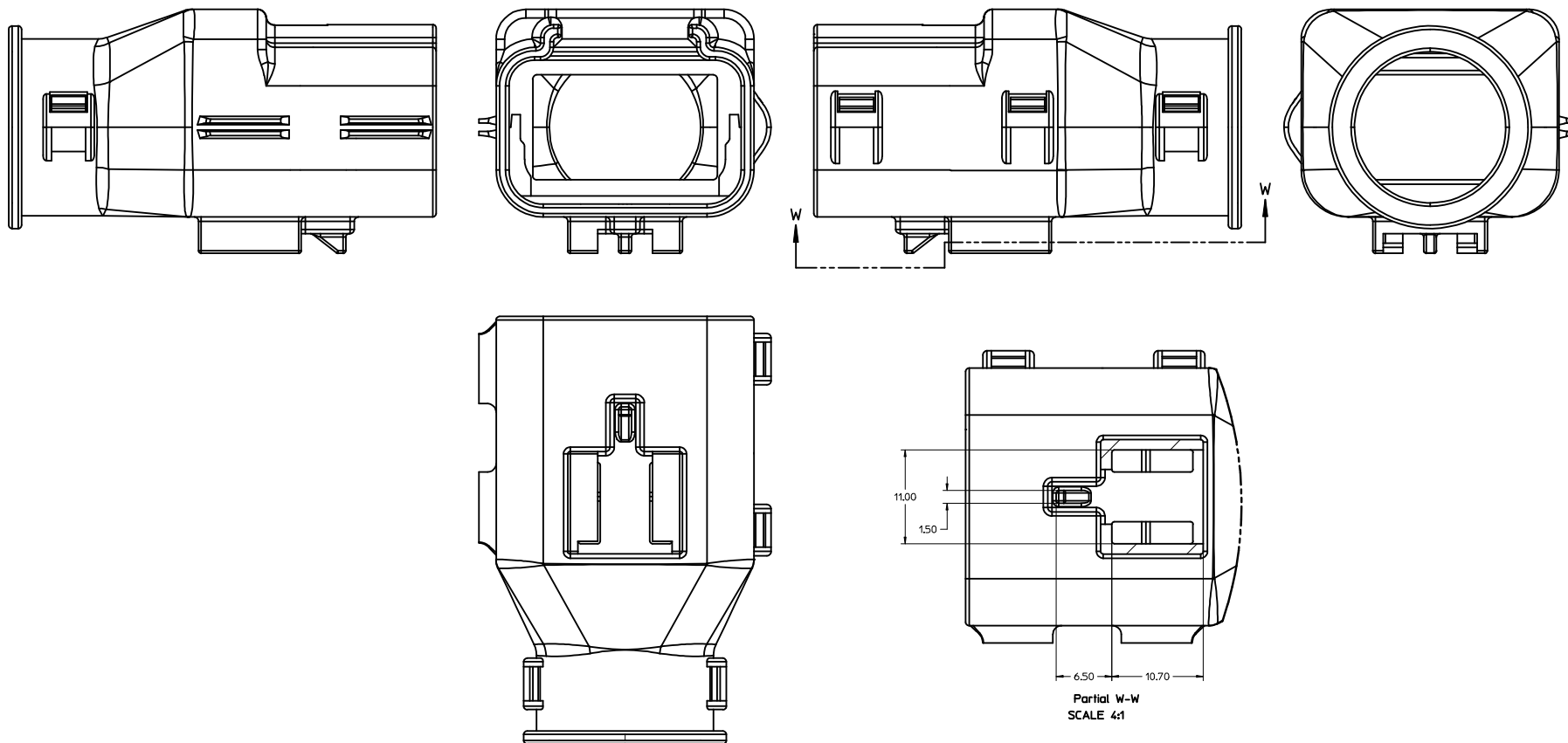
BACKSHELL NOTES: VALID UNLESS OTHERWISE SPECIFIED

1. GENERAL:
  - a. APPLICATION SPECIFICATION SEE: AS-\*\*\*\*\*TBD\*\*\*\*\*
    - DESIGNED TO MATE WITH RECEPTACLE SEALED ASSEMBLY SPECIFIED IN MOLEX DRAWING SD-33472-121.
    - SYSTEM TO BE USED WITH WIRE WITHIN DIAMETER RANGE OF TBDmm TO TBDmm.
    - COMPONENTS ARE OPTIONAL AND MUST BE PURCHASED SEPARATELY
    - BACKSHELL DESIGN IS OWNED BY SCHLEMMER
  - b. PRODUCT SPECIFICATION SEE: PS-\*\*\*\*\*TBD\*\*\*\*\*
  - c. PACKAGING SPECIFICATION PER MOLEX DRAWING: PK-\*\*\*\*\*TBD\*\*\*\*\*
  - d. PARTS MUST BE IN COMPLIANCE TO MOLEX CHEMICAL SUBSTANCES FOR PRODUCTS AND PACKAGING SPECIFICATION: ES-40000-5016
  - e. DATA MUST BE SUBMITTED UNDER THE MOLEX PART NUMBER TO IMDS (COMPANY ID#13255)
2. DESIGN - MATERIALS:
  - a. PA66 0% GLASS FILLED
  - b. BLACK
3. DESIGN - GEOMETRY:
  - a. THIS IS A 100% CAD GENERATED PART. THE CAD MATHEMATICAL DATA IS THE MASTER FOR THIS PART. FOR DIMENSIONAL OR ANY INFORMATION NOT SHOWN ON THIS DRAWING, ANALYZE THE CAD MODEL.
  - b. GEOMETRIC DIMENSIONS AND TOLERANCES PER ASME Y14.5M - 2009
  - c. EDGES AND UNDIMENSIONED DETAILS PER ISO13715
  - d. CORNERS SHOWN AS SHARP TO BE R 0.2 MAX.
  - e. VISUAL DEFECTS SHALL MEET COSMETIC STANDARD PS-45499-002 (Class B).

ENTER DESCRIPTION DEC NO: UAU2013-1404 DRAWN BY: DRW:DAHALL CHYK: 2013/03/06 APPR:DC LLSLE 2013/03/07 DESCRIPTION	QUALITY SYMBOLS	GENERAL TOLERANCES (UNLESS SPECIFIED)	DIMENSION STYLE	SCALE	DESIGN UNITS	THIRD ANGLE PROJECTION
	▽=0	4 PLACES ± mm ± INCH	MM ONLY	4:1	METRIC	☉
	▽=0	3 PLACES ± 0.10 ± ---	DRAWN BY DATE			
	▽=0	2 PLACES ± 0.3 ± ---	D. MARCOUX 06-13-02			
		ANGULAR ± 3 °	CHECKED BY DATE			
		DRAFT WHERE APPLICABLE MUST REMAIN WITHIN DIMENSIONS	D. GRIFFITHS 06-13-02			
			APPROVED BY DATE			
			F. HOLUB 06-13-02			
			MATERIAL NO.			
			SEE BOM			
			DOCUMENT NO.			
			SD-33472-121			
			SHEET NO.			
			4 OF 9			

20 19 18 17 16 15 14 13 12 11 10 9 8 7 6 5 4 3 2 1

BACKSHELL



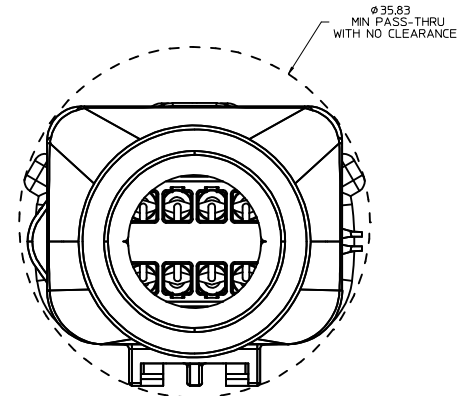
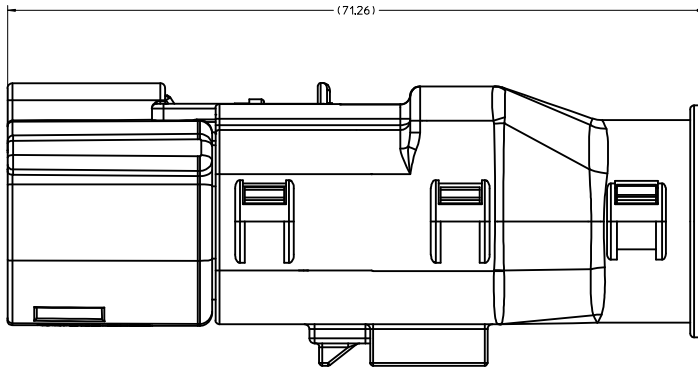
<b>ENTER DESCRIPTION</b> DEC NO: UAU2013-1404 DRAWN BY: DRWNS/DAHALL CHYK: 2013/03/06 APPR: DC LISLE 2013/03/07	<b>QUALITY SYMBOLS</b> ∇=0 ∇=0 ∇=0	<b>GENERAL TOLERANCES (UNLESS SPECIFIED)</b>		<b>DIMENSION STYLE</b> MM ONLY	SCALE 4:1	DESIGN UNITS METRIC	THIRD ANGLE PROJECTION		
		4 PLACES ± 0.10 ± 0.004 3 PLACES ± 0.15 ± 0.005 2 PLACES ± 0.25 ± 0.008 1 PLACE ± 0.50 ± 0.015 0 PLACE ± 0.75 ± 0.020	mm      INCH	DRAWN BY: D. MARCOUX DATE: 06-13-02	CHECKED BY: D. GRIFFITHS DATE: 06-13-02	TITLE MX150 2X6 RECEPTACLE SEALED ASSEMBLY MAT SEAL			
		ANGULAR ± 3 ° DRAFT WHERE APPLICABLE MUST REMAIN WITHIN DIMENSIONS	MATERIAL NO: SEE BOM	APPROVED BY: F. HOLUB DATE: 06-13-02	DOCUMENT NO. SD-33472-121				
		SIZE D		THIS DRAWING CONTAINS INFORMATION THAT IS PROPRIETARY TO MOLEX INCORPORATED AND SHOULD NOT BE USED WITHOUT WRITTEN PERMISSION					

SHEET NO.  
5 OF 9

19 18 17 16 15 14 13 12 11 10 9 8 7 6 5 4 3 2 1

20 19 18 17 16 15 14 13 12 11 10 9 8 7 6 5 4 3 2 1

BACKSHELL CONFIGURATIONS



RECEPTACLE SEALED ASSEMBLY WITH RECEPTACLE BACKSHELL

<b>ENTER DESCRIPTION</b> DEC NO: UAU2013-1404 DRAWN BY: DRW:DAHALL CHKD: LJSLE APPR: DC LJSLE 2013/03/06 2013/03/07	QUALITY SYMBOLS ▽=0 ▽=0 ▽=0	GENERAL TOLERANCES (UNLESS SPECIFIED) <table border="1"> <thead> <tr> <th></th> <th>mm</th> <th>INCH</th> </tr> </thead> <tbody> <tr> <td>4 PLACES</td> <td>± .005</td> <td>± .0005</td> </tr> <tr> <td>3 PLACES</td> <td>± .005</td> <td>± .0005</td> </tr> <tr> <td>2 PLACES</td> <td>± 0.10</td> <td>± .004</td> </tr> <tr> <td>1 PLACE</td> <td>± 0.3</td> <td>± .012</td> </tr> <tr> <td>0 PLACE</td> <td>±</td> <td>±</td> </tr> </tbody> </table>		mm	INCH	4 PLACES	± .005	± .0005	3 PLACES	± .005	± .0005	2 PLACES	± 0.10	± .004	1 PLACE	± 0.3	± .012	0 PLACE	±	±	DIMENSION STYLE <b>MM ONLY</b>	SCALE <b>4:1</b>	DESIGN UNITS <b>METRIC</b>	THIRD ANGLE PROJECTION
		mm	INCH																					
	4 PLACES	± .005	± .0005																					
	3 PLACES	± .005	± .0005																					
2 PLACES	± 0.10	± .004																						
1 PLACE	± 0.3	± .012																						
0 PLACE	±	±																						
DRAWN BY: D. MARCOUX DATE: 06-13-02 CHECKED BY: D. GRIFFITHS DATE: 06-13-02 APPROVED BY: F. HOLUB DATE: 06-13-02	MATERIAL NO. <b>SEE BOM</b>		TITLE <b>MX150 2X6 RECEPTACLE SEALED ASSEMBLY MAT SEAL</b>		DOCUMENT NO. <b>SD-33472-121</b>	SHEET NO. <b>6 OF 9</b>																		
ANGLAR ± 3 ° DRAFT WHERE APPLICABLE MUST REMAIN WITHIN DIMENSIONS		THIS DRAWING CONTAINS INFORMATION THAT IS PROPRIETARY TO MOLEX INCORPORATED AND SHOULD NOT BE USED WITHOUT WRITTEN PERMISSION																						
moxlex																								

19 18 17 16 15 14 13 12 11 10 9 8 7 6 5 4 3 2 1

ASSEMBLY DESCRIPTION	ASSEMBLY PART NUMBER	A	B	C	D	CPA	1	2	3	4	5	6	7	8	9	10	11	12	STATUS	COMMENTS	OPTIONAL ATTACHMENTS SOLD SEPERATELY		
VOID KEY	33472-1240																			NOT RECOMMENDED		OK TO TOOL	OK TO TOOL
KEY D W/CPA, GREEN	33472-1239				D	CPA	1					6	7							NOT RECOMMENDED		OK TO TOOL	OK TO TOOL
KEY C W/CPA, BROWN	33472-1238				C	CPA	1					6	7							NOT RECOMMENDED		OK TO TOOL	OK TO TOOL
KEY B W/CPA, LIGHT GRAY	33472-1237				B	CPA	1					6	7							SALEABLE		OK TO TOOL	OK TO TOOL
KEY A W/CPA, BLACK	33472-1236	A				CPA	1					6	7							SALEABLE		OK TO TOOL	OK TO TOOL
VOID KEY	33472-1235																						
KEY D, GREEN	33472-1234				D		1					6	7							NOT RECOMMENDED		OK TO TOOL	OK TO TOOL
KEY C, BROWN	33472-1233				C		1					6	7							NOT RECOMMENDED		OK TO TOOL	OK TO TOOL
KEY B, LIGHT GRAY	33472-1232				B		1					6	7							SALEABLE		OK TO TOOL	OK TO TOOL
KEY A, BLACK	33472-1231	A					1					6	7							SALEABLE		OK TO TOOL	OK TO TOOL
VOID KEY	33472-1230																						
KEY D W/CPA, GREEN	33472-1229				D	CPA						6	7							NOT RECOMMENDED		OK TO TOOL	OK TO TOOL
KEY C W/CPA, BROWN	33472-1228				C	CPA						6	7							NOT RECOMMENDED		OK TO TOOL	OK TO TOOL
KEY B W/CPA, LIGHT GRAY	33472-1227				B	CPA						6	7							SALEABLE		OK TO TOOL	OK TO TOOL
KEY A W/CPA, BLACK	33472-1226	A				CPA						6	7							SALEABLE		OK TO TOOL	OK TO TOOL
VOID KEY	33472-1225																						
KEY D, GREEN	33472-1224				D							6	7							NOT RECOMMENDED		OK TO TOOL	OK TO TOOL
KEY C, BROWN	33472-1223				C							6	7							NOT RECOMMENDED		OK TO TOOL	OK TO TOOL
KEY B, LIGHT GRAY	33472-1222				B							6	7							SALEABLE		OK TO TOOL	OK TO TOOL
KEY A, BLACK	33472-1221	A										6	7							SALEABLE		OK TO TOOL	OK TO TOOL
VOID KEY	33472-1220																						
KEY D W/CPA, GREEN	33472-1219				D	CPA						6								NOT RECOMMENDED		OK TO TOOL	OK TO TOOL
KEY C W/CPA, BROWN	33472-1218				C	CPA						6								NOT RECOMMENDED		OK TO TOOL	OK TO TOOL
KEY B W/CPA, LIGHT GRAY	33472-1217				B	CPA						6								SALEABLE		OK TO TOOL	OK TO TOOL
KEY A W/CPA, BLACK	33472-1216	A				CPA						6								SALEABLE		OK TO TOOL	OK TO TOOL
VOID KEY	33472-1215																						
KEY D, GREEN	33472-1214				D							6								NOT RECOMMENDED		OK TO TOOL	OK TO TOOL
KEY C, BROWN	33472-1213				C							6								NOT RECOMMENDED		OK TO TOOL	OK TO TOOL
KEY B, LIGHT GRAY	33472-1212				B							6								SALEABLE		OK TO TOOL	OK TO TOOL
KEY A, BLACK	33472-1211	A										6								SALEABLE		OK TO TOOL	OK TO TOOL
VOID KEY	33472-1210																						
KEY D W/CPA, GREEN	33472-1209				D	CPA														NOT RECOMMENDED	SEE P/N 33472-1260	OK TO TOOL	OK TO TOOL
KEY C W/CPA, BROWN	33472-1208				C	CPA														NOT RECOMMENDED	SEE P/N 33472-1259	OK TO TOOL	OK TO TOOL
KEY B W/CPA, LIGHT GRAY	33472-1207				B	CPA														SALEABLE		OK TO TOOL	OK TO TOOL
KEY A W/CPA, BLACK	33472-1206	A				CPA														SALEABLE		OK TO TOOL	OK TO TOOL
VOID KEY	33472-1205																						
KEY D, GREEN	33472-1204				D															NOT RECOMMENDED	SEE P/N 33472-1254	OK TO TOOL	OK TO TOOL
KEY C, BROWN	33472-1203				C															NOT RECOMMENDED	SEE P/N 33472-1253	OK TO TOOL	OK TO TOOL
KEY B, LIGHT GRAY	33472-1202				B															SALEABLE		OK TO TOOL	OK TO TOOL
KEY A, BLACK	33472-1201	A																		SALEABLE		OK TO TOOL	OK TO TOOL

BLOCKED TERMINAL		
CAVITY WITH A NUMBER INDICATES BLOCKED TERMINAL POSITION CAVITY WITHOUT A NUMBER INDICATES OPEN TERMINAL POSITION		
DESCRIPTION	COLOR	MATERIAL
MAT SEAL	LIGHT BLUE	INHERENTLY LUBRICATED SILICONE
RING SEAL	GREEN	INHERENTLY LUBRICATED SILICONE
PLR	NATURAL	SPS/NYLON GF20
GROMMET CAP	BLACK	SPS/NYLON GF20
CPA	RED	PBT GF20
HOUSING KEYING OPTION D	STONE GRAY	SPS/NYLON GF20
HOUSING KEYING OPTION C	DARK GRAY	SPS/NYLON GF20
HOUSING KEYING OPTION D	GREEN	SPS/NYLON GF20
HOUSING KEYING OPTION C	BROWN	SPS/NYLON GF20
HOUSING KEYING OPTION B	LIGHT GRAY	SPS/NYLON GF20
HOUSING KEYING OPTION A	BLACK	SPS/NYLON GF20

ABBREVIATION	COMPONENT
A	HOUSING KEY A
B	HOUSING KEY B
C	HOUSING KEY C
D	HOUSING KEY D
GC	GROMMET CAP
M	MAT SEAL
R	RING SEAL
P	PLR
CPA	CPA
BKS	BACKSHELL

<b>ENTER DESCRIPTION</b> EC NO. UAU2013-1404 DRAWN BY: DRW:DAWALL CHYK: 2013/03/06 APPR:DC LLSLE 2013/03/07 REV: 1	QUALITY SYMBOLS ∇=0 ∇=0 ∇=0	GENERAL TOLERANCES (UNLESS SPECIFIED) DIMENSION STYLE: MM ONLY SCALE: METRIC DESIGN UNITS: METRIC THIRD ANGLE PROJECTION	DRAWN BY: MARCOUX DATE: 06-13-02 CHECKED BY: DATE: D. GRIFFITHS 06-13-02 APPROVED BY: DATE: F. HOLUB 06-13-02	TITLE: MX150 2X6 RECEPTACLE SEALED ASSEMBLY MAT SEAL molex MATERIAL NO. SEE BOM DOCUMENT NO. SD-33472-121	SHEET NO. 7 OF 9
		ANGULAR ± 3 ° DRAFT WHERE APPLICABLE MUST REMAIN WITHIN DIMENSIONS	THIS DRAWING CONTAINS INFORMATION THAT IS PROPRIETARY TO MOLEX INCORPORATED AND SHOULD NOT BE USED WITHOUT WRITTEN PERMISSION		



KEY DESCRIPTION	PART NUMBER	REV	A	B	C	D	CPA	1	2	3	4	5	6	7	8	9	10	11	12	STATUS	COMMENTS	34951-1210 BKS WITH RIBS	34951-1220 BKS WITHOUT RIBS	
KEY A, BLACK	33472-1281	A						1			4					9			12	SALEABLE		OK TO TOOL	OK TO TOOL	
KEY A, BLACK	33472-1280	A							2					7						SALEABLE		OK TO TOOL	OK TO TOOL	
KEY A, BLACK	33472-1279	A												7				11		SALEABLE		OK TO TOOL	OK TO TOOL	
KEY B W/CPA, LIGHT GRAY	33472-1278	A	B				CPA										10	11		SALEABLE		OK TO TOOL	OK TO TOOL	
KEY A, BLACK	33472-1277	A						1						7					12	SALEABLE		OK TO TOOL	OK TO TOOL	
KEY A, BLACK	33472-1276	A						1					6							SALEABLE		OK TO TOOL	OK TO TOOL	
KEY A, BLACK	33472-1275	A						1	2	3	4	5	6		8					SALEABLE		OK TO TOOL	OK TO TOOL	
KEY A W/CPA, BLACK	33472-1274	A					CPA						6					11	12	SALEABLE		OK TO TOOL	OK TO TOOL	
KEY A, BLACK	33472-1273	A											6			9	10	11	12	SALEABLE		OK TO TOOL	OK TO TOOL	
KEY A W/CPA, BLACK	33472-1272	A					CPA						6			9	10	11	12	SALEABLE		OK TO TOOL	OK TO TOOL	
KEY A W/CPA, BLACK	33472-1271	A					CPA				4		6					10	11	12	SALEABLE		OK TO TOOL	OK TO TOOL
KEY A W/CPA, BLACK	33472-1270	A					CPA							7		9			11	12	SALEABLE		OK TO TOOL	OK TO TOOL
KEY A W/CPA, BLACK	33472-1269	A					CPA	1	2		4		6	7	8		10	11	12	SALEABLE		OK TO TOOL	OK TO TOOL	
KEY A W/CPA, BLACK	33472-1268	A					CPA	1						7						SALEABLE		OK TO TOOL	OK TO TOOL	
KEY D W/CPA, STONE GRAY	33472-1267	A				D	CPA	1					6	7						SALEABLE		OK TO TOOL	OK TO TOOL	
KEY A W/CPA, BLACK	33472-1266	A					CPA												11	12	SALEABLE		OK TO TOOL	OK TO TOOL
KEY D W/CPA, STONE GRAY	33472-1265	A				D	CPA													SALEABLE		OK TO TOOL	OK TO TOOL	
KEY C W/CPA, DARK GRAY	33472-1264	A				C	CPA													SALEABLE		OK TO TOOL	OK TO TOOL	
KEY B W/CPA, LIGHT GRAY	33472-1263	A	B				CPA													SALEABLE		OK TO TOOL	OK TO TOOL	
KEY A W/CPA, BLACK	33472-1262	A					CPA								8	9	10	11	12	SALEABLE		OK TO TOOL	OK TO TOOL	
KEY A, BLACK	33472-1261	A														9	10			SALEABLE		OK TO TOOL	OK TO TOOL	
KEY D W/CPA, STONE GRAY	33472-1260	A				D	CPA													SALEABLE		OK TO TOOL	OK TO TOOL	
KEY C W/CPA, DARK GRAY	33472-1259	A				C	CPA													SALEABLE		OK TO TOOL	OK TO TOOL	
KEY A, BLACK	33472-1258	A						1	2	3	4	5	6	7	8	9	10	11	12	SALEABLE		OK TO TOOL	OK TO TOOL	
KEY A, BLACK	33472-1257	A													8					SALEABLE		OK TO TOOL	OK TO TOOL	
KEY A W/CPA, BLACK	33472-1256	A					CPA									9	10	11	12	SALEABLE		OK TO TOOL	OK TO TOOL	
KEY A W/CPA, BLACK	33472-1255	A					CPA												11	12	SALEABLE		OK TO TOOL	OK TO TOOL
KEY D, STONE GRAY	33472-1254	A				D														SALEABLE		OK TO TOOL	OK TO TOOL	
KEY C, DARK GRAY	33472-1253	A				C														SALEABLE		OK TO TOOL	OK TO TOOL	
KEY A W/CPA, BLACK	33472-1252	A					CPA									9	10			SALEABLE		OK TO TOOL	OK TO TOOL	
KEY A, BLACK	33472-1251	A											6							SALEABLE		OK TO TOOL	OK TO TOOL	
VOID KEY	33472-1250																							
KEY D W/CPA, GREEN	33472-1249	A				D	CPA	1					6	7						NOT RECOMMENDED		OK TO TOOL	OK TO TOOL	
KEY C W/CPA, BROWN	33472-1248	A				C	CPA	1					6	7						NOT RECOMMENDED		OK TO TOOL	OK TO TOOL	
KEY B W/CPA, LIGHT GRAY	33472-1247	A	B				CPA	1					6	7						SALEABLE		OK TO TOOL	OK TO TOOL	
KEY A W/CPA, BLACK	33472-1246	A					CPA	1					6	7						SALEABLE		OK TO TOOL	OK TO TOOL	
VOID KEY	33472-1245																							
KEY D, GREEN	33472-1244	A				D		1					6	7						NOT RECOMMENDED		OK TO TOOL	OK TO TOOL	
KEY C, BROWN	33472-1243	A				C		1					6	7						NOT RECOMMENDED		OK TO TOOL	OK TO TOOL	
KEY B, LIGHT GRAY	33472-1242	A	B					1					6	7						SALEABLE		OK TO TOOL	OK TO TOOL	
KEY A, BLACK	33472-1241	A						1					6	7						SALEABLE		OK TO TOOL	OK TO TOOL	

ABBREVIATION	COMPONENT
A	HOUSING KEY A
B	HOUSING KEY B
C	HOUSING KEY C
D	HOUSING KEY D
GC	GROMMET CAP
H	MAT SEAL
R	RING SEAL
P	PLR
CPA	CPA
BKS	BACKSHELL

DESCRIPTION	COLOR	MATERIAL
MAT SEAL	LIGHT BLUE	INHERENTLY LUBRICATED SILICONE
RING SEAL	GREEN	INHERENTLY LUBRICATED SILICONE
PLR	NATURAL	SPS/NYLON GF20
GROMMET CAP	BLACK	SPS/NYLON GF20
CPA	RED	PBT GF20
HOUSING KEYING OPTION D	STONE GRAY	SPS/NYLON GF20
HOUSING KEYING OPTION C	DARK GRAY	SPS/NYLON GF20
HOUSING KEYING OPTION D	GREEN	SPS/NYLON GF20
HOUSING KEYING OPTION C	BROWN	SPS/NYLON GF20
HOUSING KEYING OPTION B	LIGHT GRAY	SPS/NYLON GF20
HOUSING KEYING OPTION A	BLACK	SPS/NYLON GF20

<b>ENTER DESCRIPTION</b> IEC NO. UAU2013-1404 DRAWN BY: DRWNSD/HALL CHYK: 2013/03/06 APPR: DC LLS/L 2013/03/07 REV DESCRIPTION	QUALITY SYMBOLS ∇=0 ∇=0 ∇=0	GENERAL TOLERANCES (UNLESS SPECIFIED) mm INCH 4 PLACES ±.000 ±.000 3 PLACES ±.010 ±.000 2 PLACES ±.030 ±.000 1 PLACE ±.075 ±.000 0 PLACE ±.150 ±.000	DIMENSION STYLE MM ONLY	SCALE DESIGN UNITS METRIC	THIRD ANGLE PROJECTION	
	DRAWN BY: MARCOUX DATE: 06-13-02	CHECKED BY: D. GRIFFITHS DATE: 06-13-02	APPROVED BY: F. HOLUB DATE: 06-13-02	MATERIAL NO. SEE BOM	DOCUMENT NO. SD-33472-121	SHEET NO. 8 OF 9
	TITLE MX150 2X6 RECEPTACLE SEALED ASSEMBLY MAT SEAL					
	moxle					

