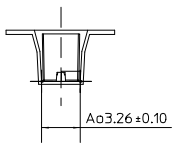
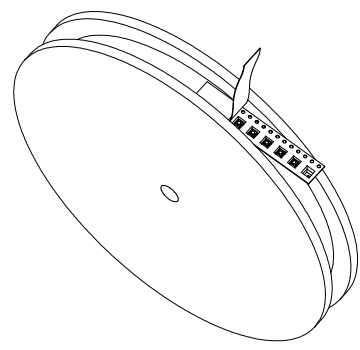
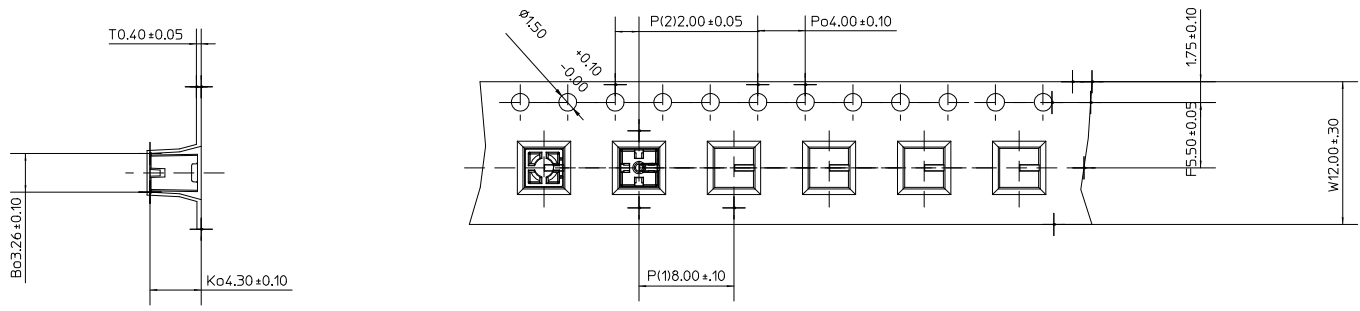
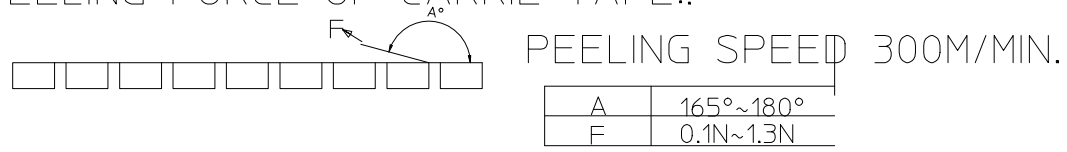


3	2	1
REV	EC NO.	DATE
C	ABU2011-0116	20110609

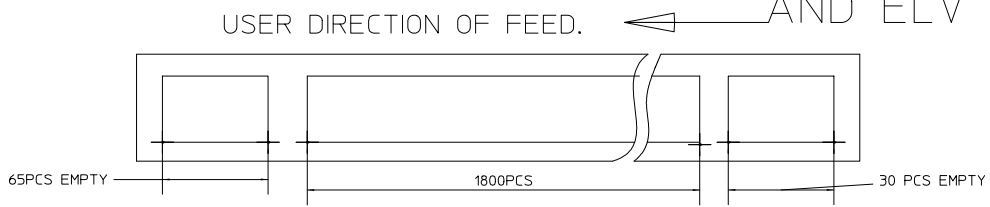


- NOTE:
1. POCKET TAPE MATERIAL: 0.40 PSBC.
 2. REEL SIZE $\phi 13" \times 4"$.
 3. QUANTITY PER REEL 1800 POCKETS/ 15.16 M.
 4. DIMENSIONS MEASURED FROM WORKINGPLANE.
 5. GENERAL TOLERANCE: $\pm 0.20\text{MM}$ UNLESS OTHERWISE STATED.
 6. THE PEELING FORCE OF CARRIE TAPE:.

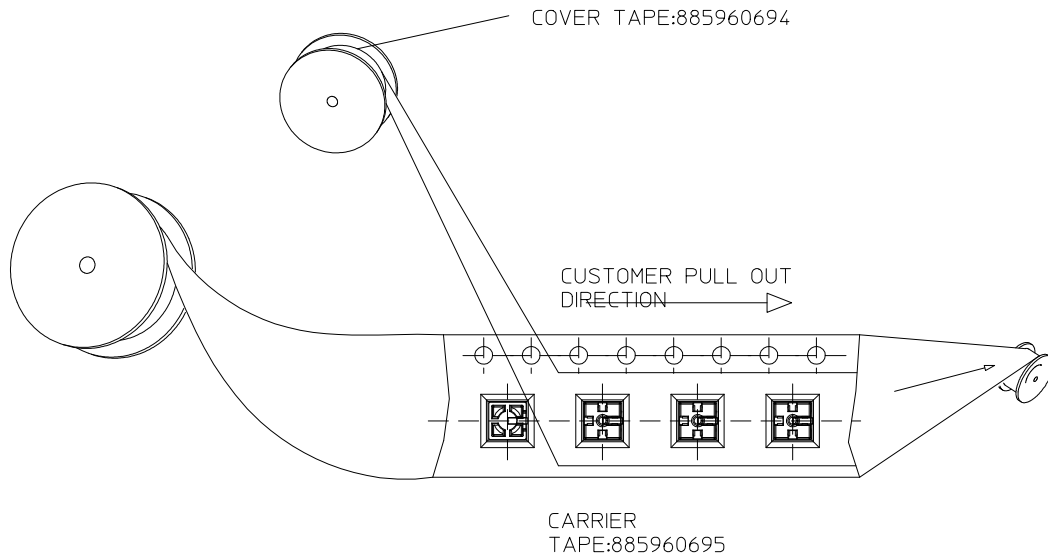


7. USER DIRECTION OF FEED: ←

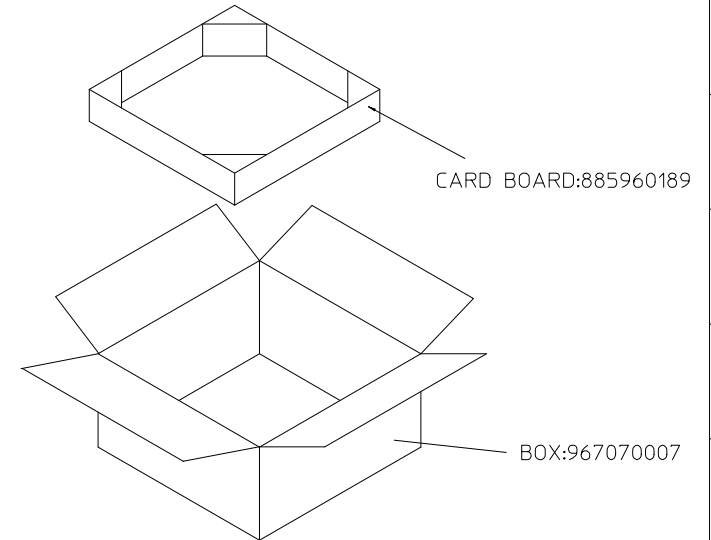
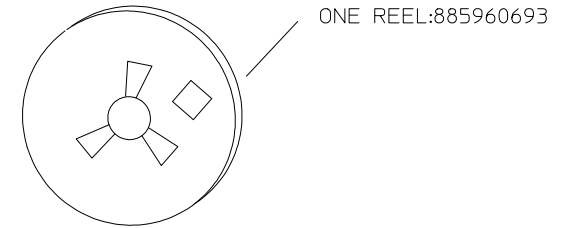
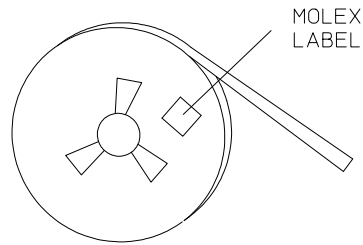
7. PRODUCT COMPLANT TO ROHS DIERTIVE 2002/95/EC AND ELV DIRECTIVE 2000/53/EC



ENTER DESCRIPTION EC NO: DRAWN BY: CHKD: APPR:	QUALITY SYMBOLS ▽=0 ▽=0	GENERAL TOLERANCES (UNLESS SPECIFIED)		DIMENSION STYLE		SCALE	DESIGN UNITS	THIRD ANGLE PROJECTION	
		mm	INCH	MM					
		4 PLACES		DRAWN BY	DATE	TITLE			
		3 PLACES		COOPERZHOU	20110609	2.4GHz SMD ON GROUND PACKAGING			
2 PLACES		CHECKED BY	DATE	MOLEX INCORPORATED					
1 PLACE		ERIC SHI	20110609	MATERIAL NO. 885960695					
ANGULAR 1/2		APPROVED BY	DATE	DOCUMENT NO. PK-47948-001					
DRAFT WHERE APPLICABLE MUST REMAIN WITHIN DIMENSIONS		WELSON TAN	20110609	SHEET NO. 1 OF 2					
SIZE A1		THIS DRAWING CONTAINS INFORMATION THAT IS PROPRIETARY TO MOLEX INCORPORATED AND SHOULD NOT BE USED WITHOUT WRITTEN PERMISSION							



P/N	Q'TY/REEL	REEL/BOX	SPQ	MOQ
479480001	1800	9	1800	16200



ENTER DESCRIPTION EC NO: DRAWN BY: CHKD: APPR:	QUALITY SYMBOLS	GENERAL TOLERANCES (UNLESS SPECIFIED)		DIMENSION STYLE	SCALE	DESIGN UNITS	THIRD ANGLE PROJECTION	
	▽=0 ▽=0	mm	INCH	MM				
	4 PLACES			DRAWN BY: COOPERZHOU	DATE: 20110609	TITLE: 2.4GHz SMD ON GROUND PACKAGING		
	3 PLACES			CHECKED BY: ERIC SHI	DATE: 20110609	MOLEX INCORPORATED		
2 PLACES			APPROVED BY: WELSON TAN	DATE: 20110609	MATERIAL NO.	DOCUMENT NO. PK-47948-001	SHEET NO. 2 OF 2	
1 PLACE			ANGULAR 1/2	SEE CHART	THIS DRAWING CONTAINS INFORMATION THAT IS PROPRIETARY TO MOLEX INCORPORATED AND SHOULD NOT BE USED WITHOUT WRITTEN PERMISSION			
DRAFT WHERE APPLICABLE MUST REMAIN WITHIN DIMENSIONS								