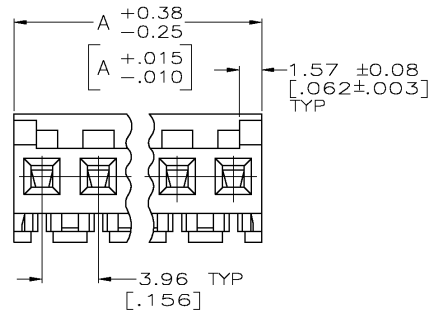
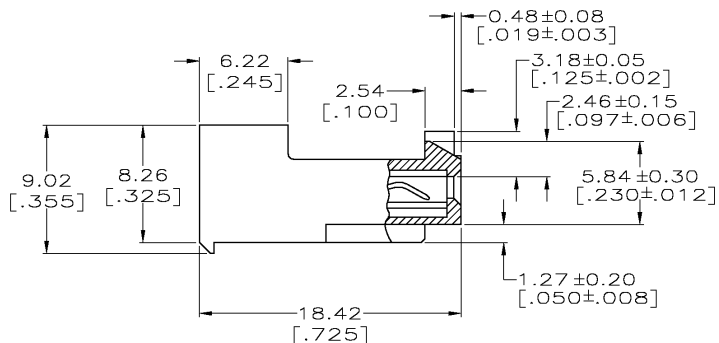
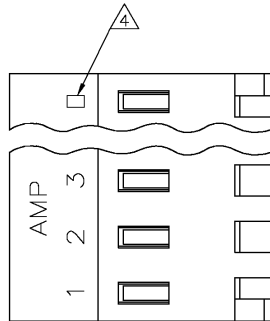


THIS DRAWING IS UNPUBLISHED. RELEASED FOR PUBLICATION
 © COPYRIGHT BY TYCO ELECTRONICS CORPORATION. ALL RIGHTS RESERVED.

LOC		DIST		REVISIONS			
CM	OO	P	LTR	DESCRIPTION	DATE	OWN	APVD
		E		REV PER ECN 0G3B-0349-03	09JUL03	SC	DB



△ MATERIAL: CONNECTOR - NYLON UL94-V2 (RED)
 CONTACTS - 0.30[.012] THICK COPPER ALLOY
 (BRIGHT TIN-LEAD 0.00203[.000080] MIN. THICK
 FOR CONTACTS 643819-2 THRU 2-643819-4).
 (BRIGHT TIN PLATE 0.00305[.000120] MIN. THICK
 FOR CONTACTS 3-643819-2 THRU 5-643819-4).

- CONTACTS ACCEPT 22 AWG WIRE WITH 2.41[.095] MAX INSULATION DIAMETER.
- CONTACTS MUST ACCEPT 1.14±0.03[.045] POST AND REMAIN LOCKED IN POSITION.
- △ IDENTIFICATION NUMBER FOR LAST CIRCUIT MAY NOT APPEAR ON ALL ASSEMBLIES.
- DIMENSIONS IN BRACKETS ARE IN INCHES.
- HOUSING FEATURES ARE: CLOSED END WITH LOCKING RAMP AND POLARIZING TAB.

YES	95.10[3.744]	24	5-643819-4
YES	91.13[3.588]	23	5-643819-3
YES	87.17[3.432]	22	5-643819-2
YES	83.21[3.276]	21	5-643819-1
YES	79.25[3.120]	20	5-643819-0
YES	75.29[2.964]	19	4-643819-9
YES	71.32[2.808]	18	4-643819-8
YES	67.36[2.652]	17	4-643819-7
YES	63.40[2.496]	16	4-643819-6
YES	59.44[2.340]	15	4-643819-5
YES	55.47[2.184]	14	4-643819-4
YES	51.51[2.028]	13	4-643819-3
YES	47.55[1.872]	12	4-643819-2
YES	43.59[1.716]	11	4-643819-1
YES	39.62[1.560]	10	4-643819-0
YES	35.66[1.404]	9	3-643819-9
YES	31.70[1.248]	8	3-643819-8
YES	27.74[1.092]	7	3-643819-7
YES	23.77[.936]	6	3-643819-6
YES	19.81[.780]	5	3-643819-5
YES	15.85[.624]	4	3-643819-4
YES	11.89[.468]	3	3-643819-3
YES	7.92[.312]	2	3-643819-2
NO	95.10[3.744]	24	2-643819-4
NO	91.13[3.588]	23	2-643819-3
NO	87.17[3.432]	22	2-643819-2
NO	83.21[3.276]	21	2-643819-1
NO	79.25[3.120]	20	2-643819-0
NO	75.29[2.964]	19	1-643819-9
NO	71.32[2.808]	18	1-643819-8
NO	67.36[2.652]	17	1-643819-7
NO	63.40[2.496]	16	1-643819-6
NO	59.44[2.340]	15	1-643819-5
NO	55.47[2.184]	14	1-643819-4
NO	51.51[2.028]	13	1-643819-3
NO	47.55[1.872]	12	1-643819-2
NO	43.59[1.716]	11	1-643819-1
NO	39.62[1.560]	10	1-643819-0
NO	35.66[1.404]	9	643819-9
NO	31.70[1.248]	8	643819-8
NO	27.74[1.092]	7	643819-7
NO	23.77[.936]	6	643819-6
NO	19.81[.780]	5	643819-5
NO	15.85[.624]	4	643819-4
NO	11.89[.468]	3	643819-3
NO	7.92[.312]	2	643819-2
LEADFREE	DIM A	NO. OF CIRCUITS	PART NO.

THIS DRAWING IS A CONTROLLED DOCUMENT.

DIMENSIONS:	INCHES:	TOLENCES UNLESS OTHERWISE SPECIFIED:	0 PLC ±	1 PLC ±	2 PLC ±	3 PLC ± 0.15 [.005]	4 PLC ±	ANGLES ±	FINISH
									△

APVD	D. BOSSI	09JUL2003	NAME	MTA 156 CONNECTOR ASSEMBLY, 22 AWG, STANDARD	
CHK	D. BOSSI	09JUL2003	PRODUCT SPEC	108-1051	
APVD	D. BOSSI	09JUL2003	APPLICATION SPEC	114-1020	
SIZE	A2	CAGE CODE	00779	DRAWING NO	643819
WEIGHT	CUSTOMER DRAWING				
SCALE	4:1	SHEET	1 OF 1	REV	E

THIS DRAWING IS A CONTROLLED DOCUMENT. DWG S. CARPENTER 09JUL2003
 CHK D. BOSSI 09JUL2003
 APVD D. BOSSI 09JUL2003
 Tyco Electronics Corporation
 Harrisburg, PA 17105
 MTA 156 CONNECTOR ASSEMBLY, 22 AWG, STANDARD
 SIZE A2 CAGE CODE 00779 DRAWING NO 643819
 WEIGHT CUSTOMER DRAWING SCALE 4:1 SHEET 1 OF 1 REV E

