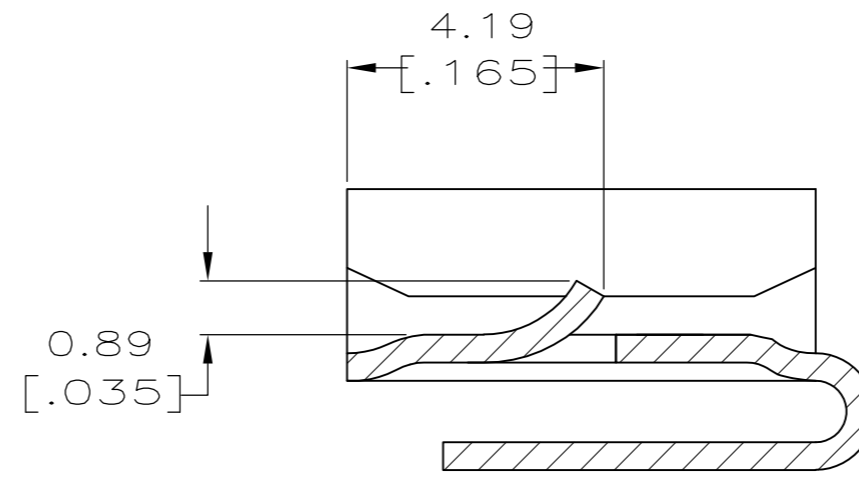
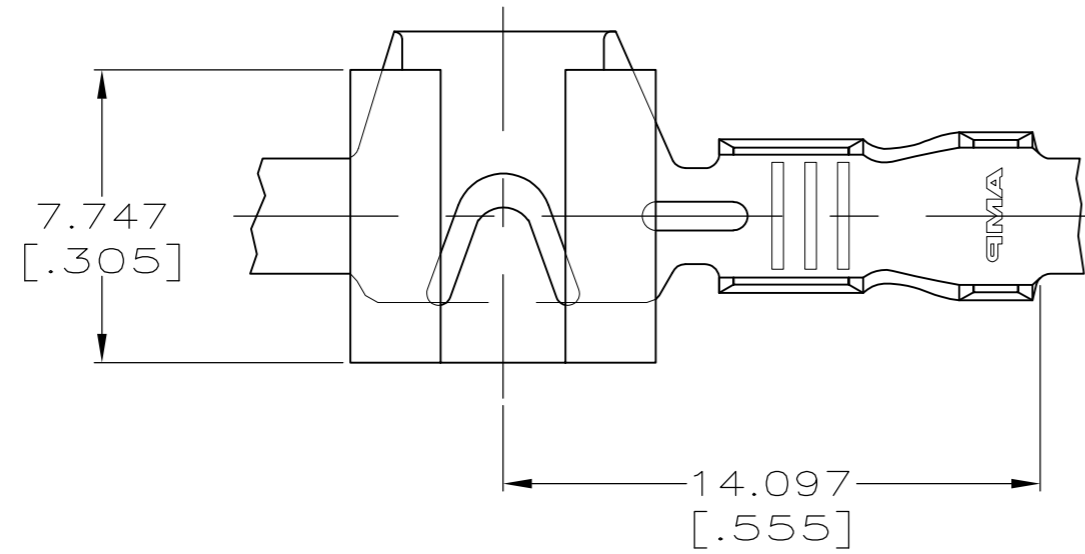


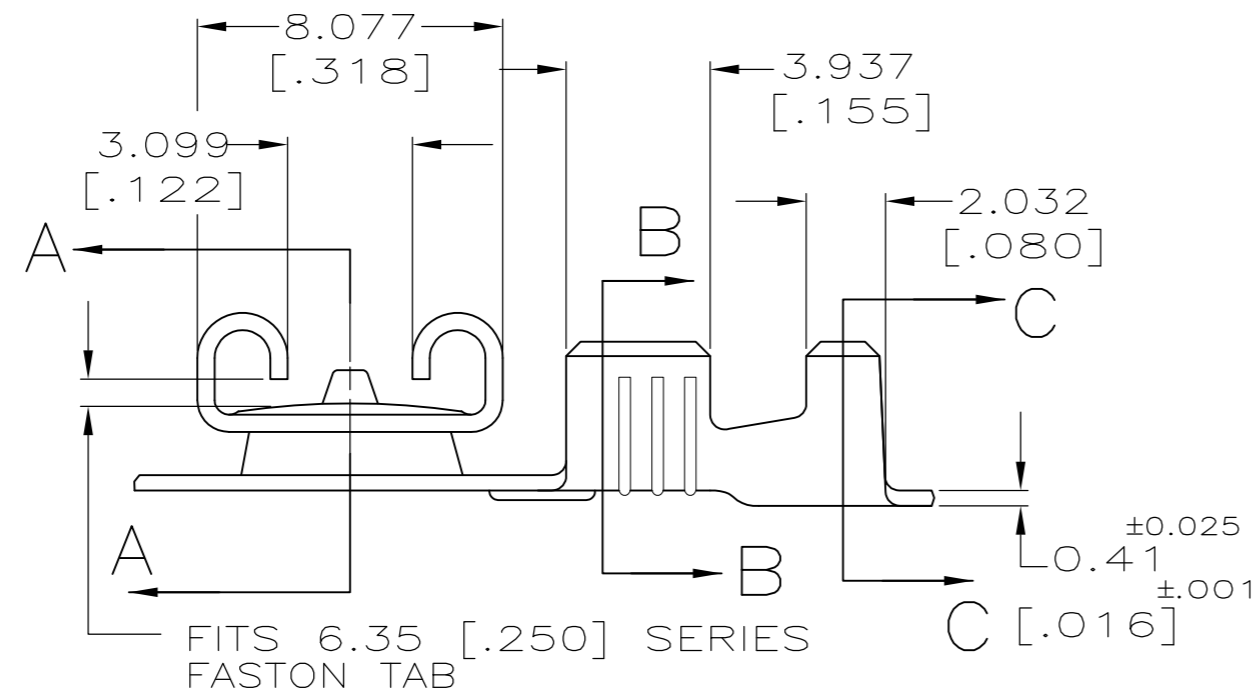
THIS DRAWING IS UNPUBLISHED. RELEASED FOR PUBLICATION
 © COPYRIGHT - By - ALL RIGHTS RESERVED.

LOC		DIST		REVISIONS			
P	LTR	DESCRIPTION		DATE	DWN	APVD	
AF	50	F		REVISED PER ECR-12-013518	23NOV2012	KH	PD

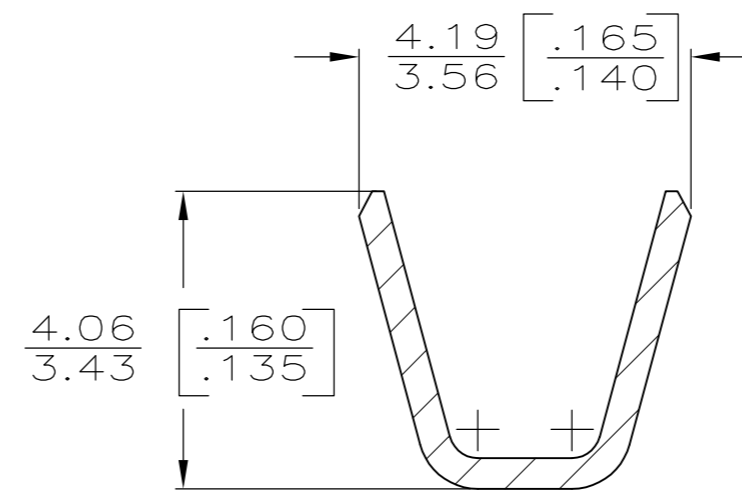
1 CONTINUOUS STRIP ON REELS.



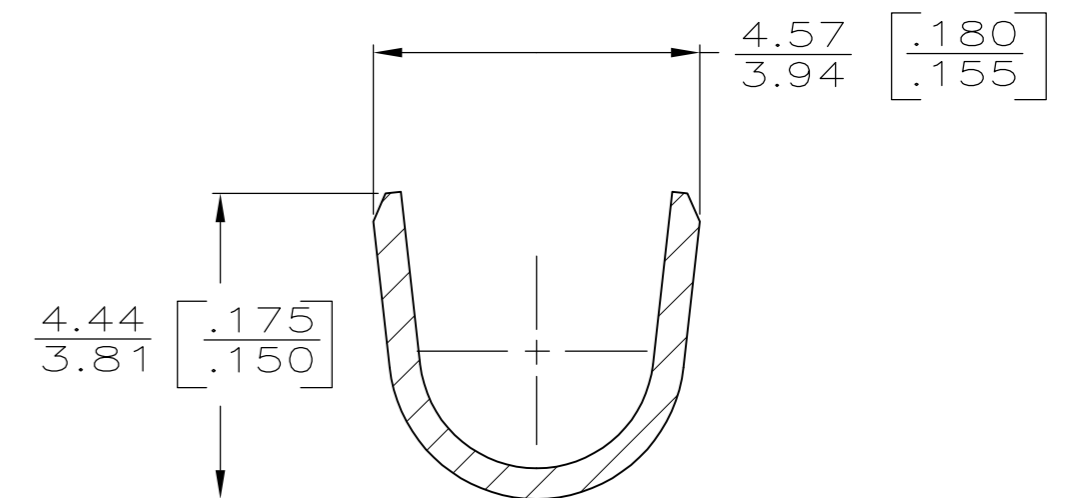
SECTION A-A
SCALE 8:1



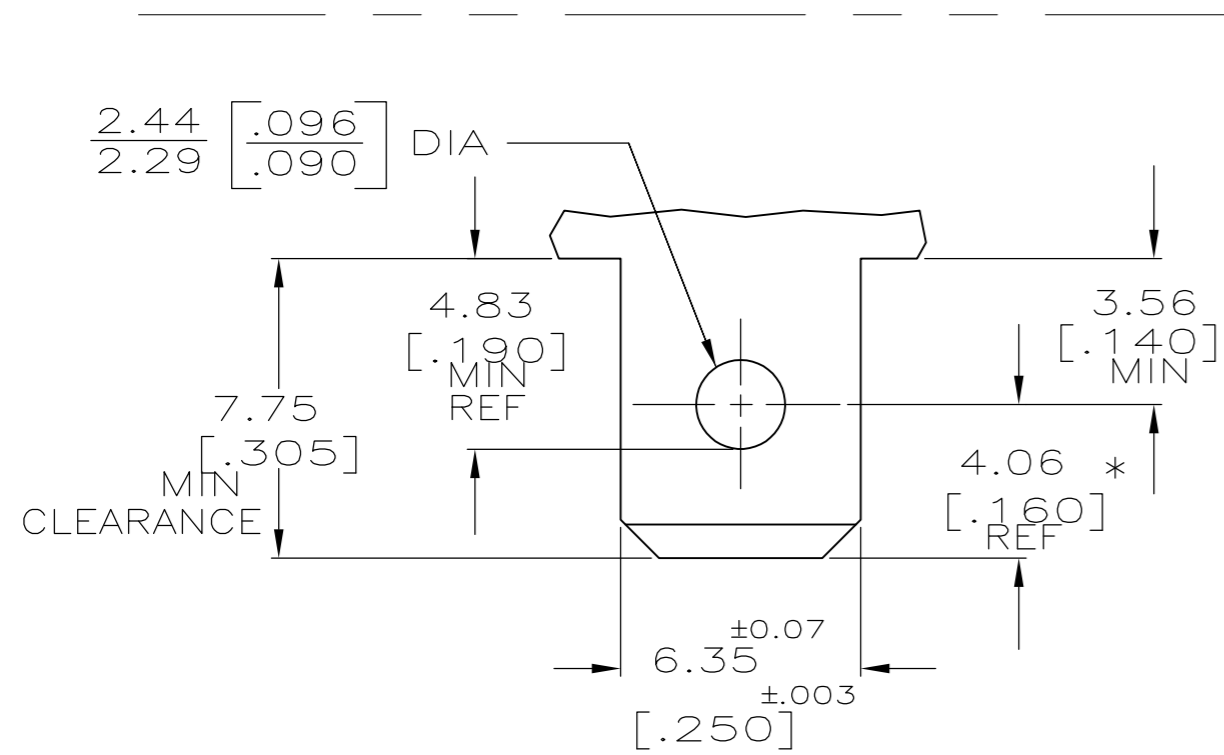
FITS 6.35 [.250] SERIES FASTON TAB



SECTION B-B
SCALE 10:1



SECTION C-C
SCALE 10:1



RECOMMENDED MATING TAB

MAT'L: 1/2 H BRASS OR NICKEL PL STL

* TO BE USE ONLY WHEN SHOULDER IS ELIMINATED

2.29-3.30 [.090-.130]	0.8-2.0mm ² [18-14]	0.81 [.032]	63541-1
INSUL RANGE	WIRE SIZE	MATING TAB THK ±.001	PART NO

0	3.56 [.140]	5.59 [.220]	F	3.30 [.130]	1.75 [.069]	2.0mm ² [14]
					1.55 [.061]	1.3mm ² [16]
					1.42 [.056]	0.8mm ² [18]
TYPE	WIDTH	STRIP LENGTH ±.015	TYPE	WIDTH	±.051 [±.002] HEIGHT	WIRE
INSUL BARREL CRIMP			WIRE BARREL CRIMP			

THIS DRAWING IS A CONTROLLED DOCUMENT.	
DIMENSIONS: mm [INCHES]	TOLERANCES UNLESS OTHERWISE SPECIFIED:
0 PLC ± -	1 PLC ± -
2 PLC ± -	3 PLC ± 0.25 [.010]
4 PLC ± -	ANGLES ± -
MATERIAL: BRASS	FINISH: TIN

DWN: JR RUTH 6/27/89	CHK: P FORTNEY 6/27/89	APVD: J GILLESPIE 6/27/89	NAME: RECP.T., FASTON, FLAG, REVERSIBLE, LOCK-ON, 6.35 [.250] SERIES
PRODUCT SPEC: -	APPLICATION SPEC: -	WEIGHT: -	RESTRICTED TO: -
SIZE: A2	CAGE CODE: 00779	DRAWING NO: C-63541	SCALE: 5:1
CUSTOMER DRAWING	SHEET: 1 OF 1	REV: F	