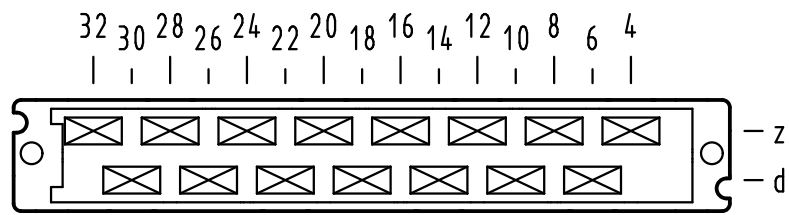


Alle Rechte vorbehalten/ All rights reserved

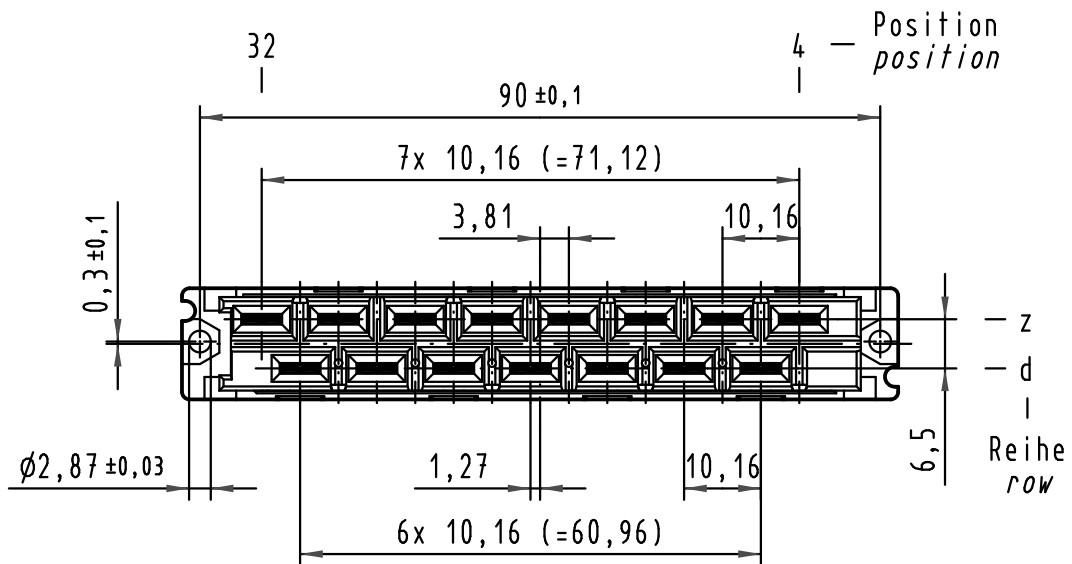
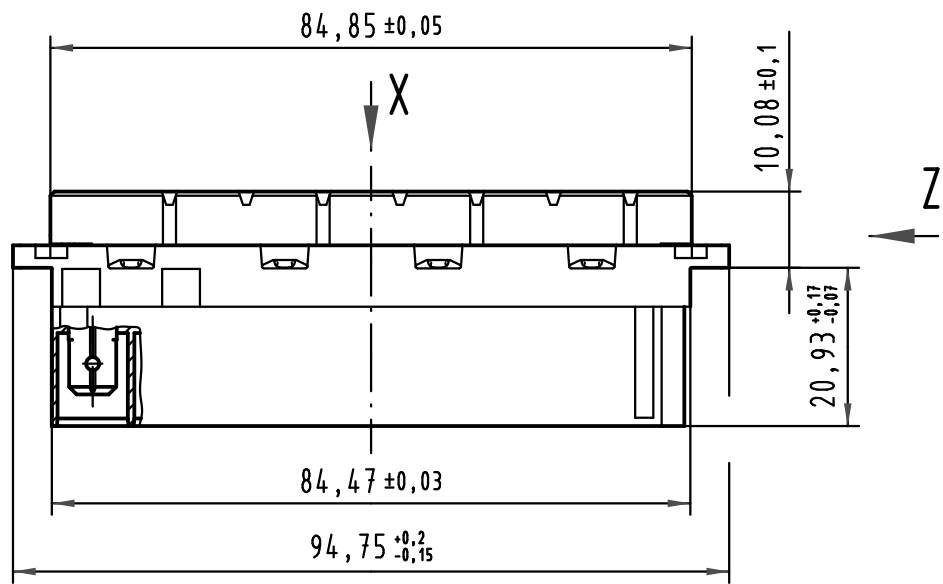
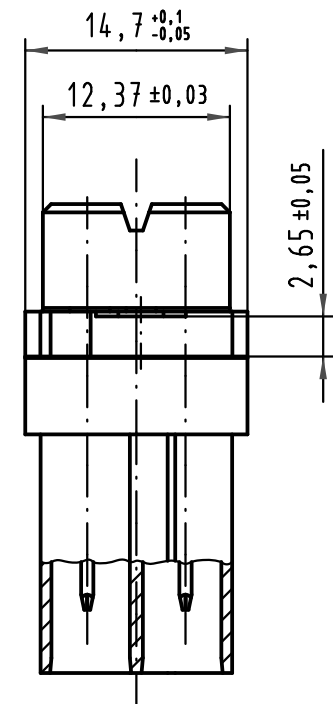
X
Kontaktanordnung
contact arrangement



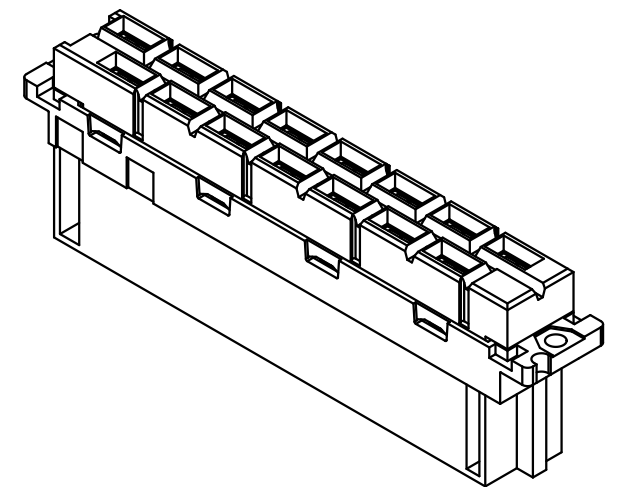
15 Kontakte
15 contacts

- = Kontaktposition belegt
= position with contact
- = Kontaktposition nicht belegt
= position without contact

Z (2:1)



Kontaktfläche Ag
contact surface Ag



All Dimensions in mm Original Size DIN A 3		Techn. Character.			Nicht tolerierte Maße/Free size tolerances ergänzend/complementary IEC 60603-2	
			Dat.	Name	Maßstab/Scale 1:1	Bauform / type H 15 (NFF F1/12) Federleiste Faston längs female connector faston along
		Detail.	16.02.10	LehT		
		Insp.	16.02.10	Lk		
		Stand.				
36008		HARTING Electronics GmbH & Co. KG			TB 09 06 215 2871 222	
Mod.	Dat.	Name	D-32339 ESPELKAMP		Sub.	Blatt/ page