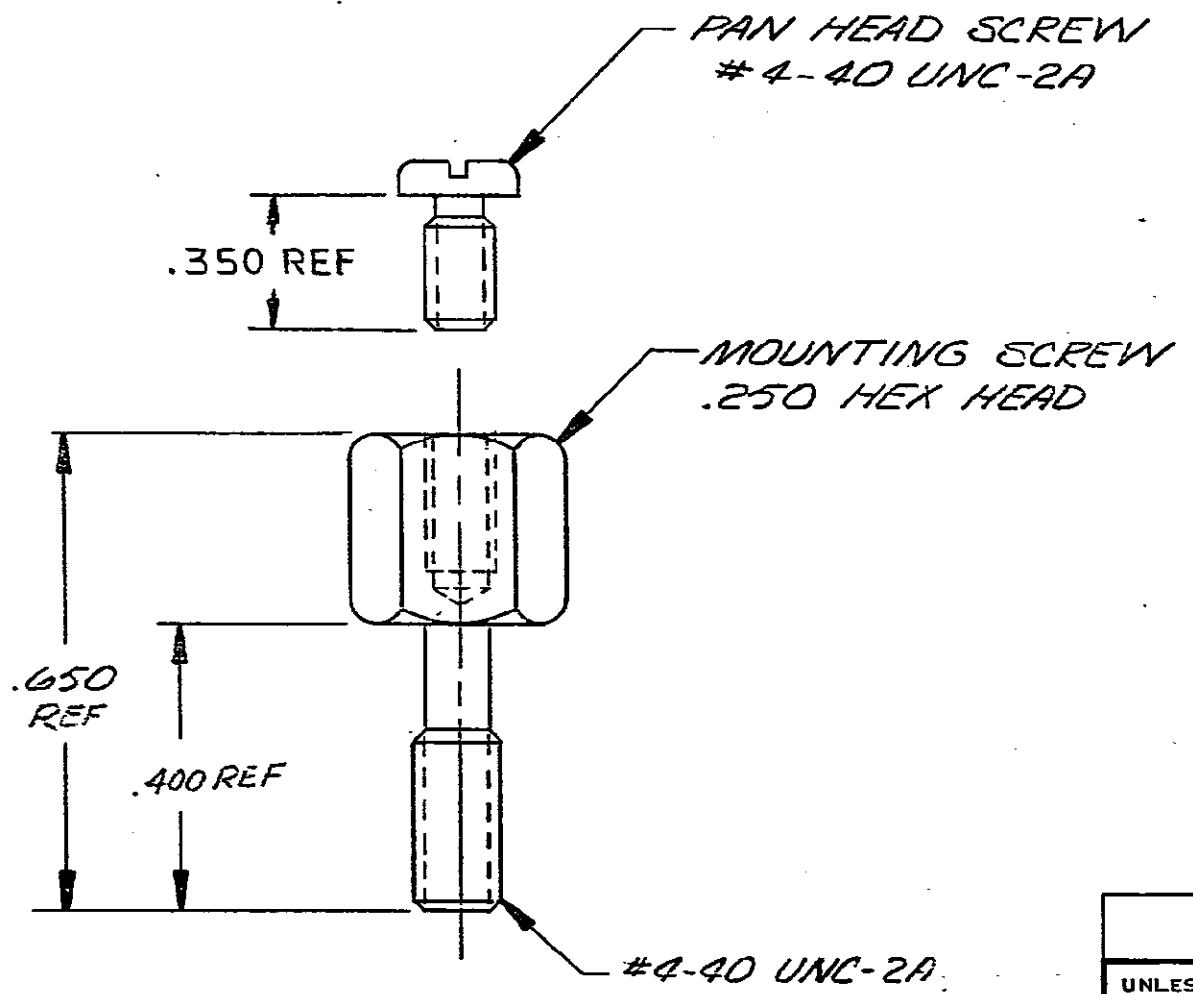


© COPYRIGHT 1977 BY AMP INCORPORATED, HARRISBURG, PA.
 ALL INTERNATIONAL RIGHTS RESERVED. AMP INCORPORATED PRODUCTS
 COVERED BY U. S. AND FOREIGN PATENTS AND/OR PATENTS PENDING.

REVISIONS						
P	F	ZONE	LTR	DESCRIPTION	DATE	APPROVED
C			C	REV PER AA-3022	8-29-86	VS

UNPUBLISHED COPY NOT TO BE
 REPRODUCED NOR PUBLISHED
 WITHOUT WRITTEN PERMISSION
 OF AMP INCORPORATED

⚠ MATERIAL: PAN HEAD SCREW - ZINC PLATED STEEL
 MOUNTING SCREW - ZINC PLATE WITH
 YELLOW CHROMATE OVER STEEL.



UNLESS OTHERWISE SPECIFIED DIMENSIONS ARE IN INCHES. TOLERANCES ON: DECIMALS ± .005 ANGLES ± .5°		CONTRACT NO	AMP INCORPORATED Harrisburg, Pa.	
MATERIAL	DR <i>James B. Peltz</i> 2-7-77	CHK <i>J. Conroy</i> 2-8-77	NAME KIT, HDW, BACK PNL MTG SCR LOCK CHAMP	
FINISH	APPO <i>C.F. Moore</i> 2/23/83	APPD	SIZE B	CODE IDENT NO 00779
	DSGN APPD	OTHER APPD	NUMBER 552631	SHEET 1 OF 1
			SCALE NTS	