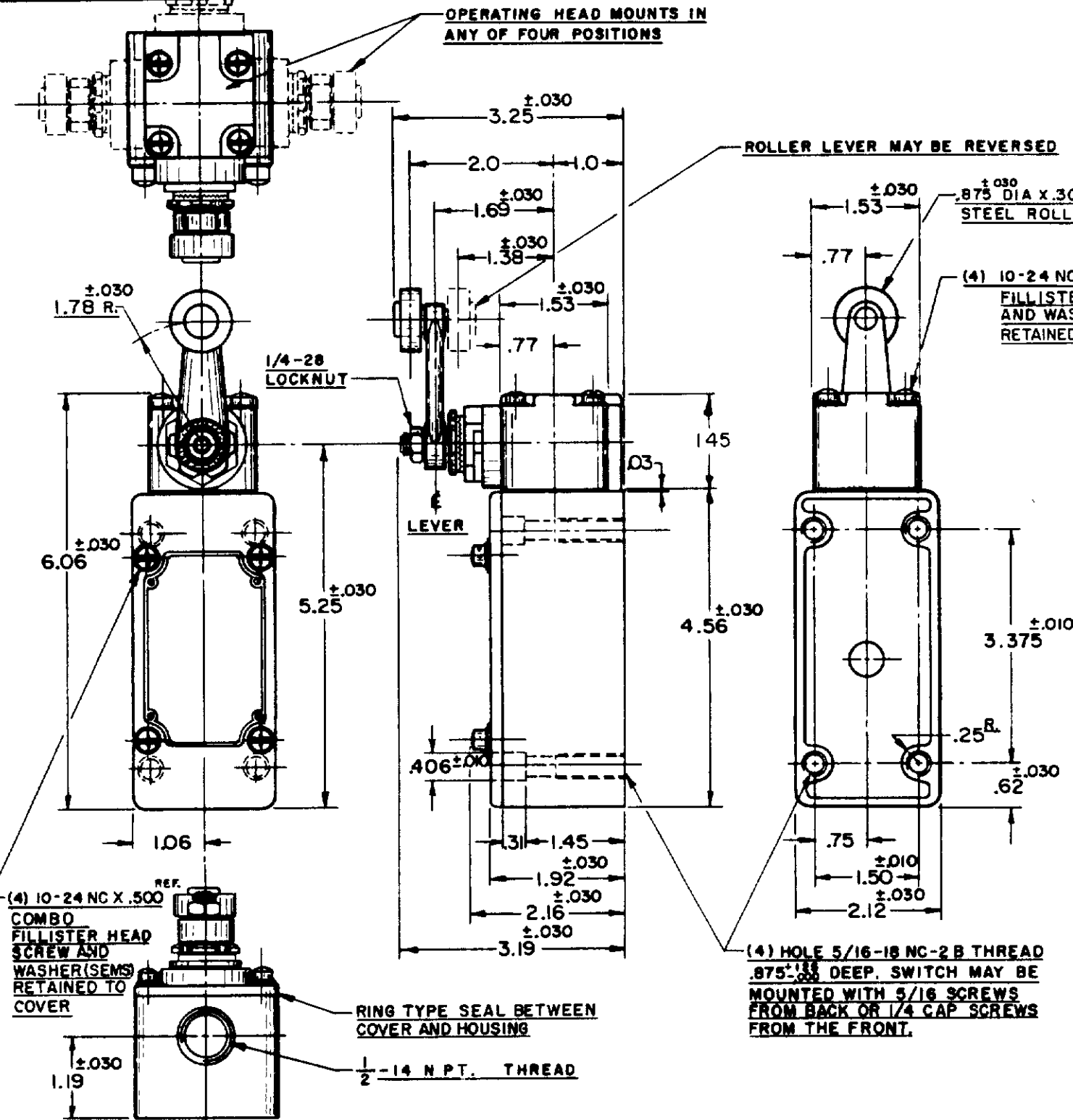


MICRO SWITCH

SWITCH - ENCLOSED

CATALOG LISTING
151ML1

THIS DRAWING COVERS A PROPRIETARY ITEM AND IS THE PROPERTY OF MICRO SWITCH A DIVISION OF HONEYWELL THIS DRAWING IS NOT TO BE COPIED OR USED WITHOUT THE APPROVAL OF MICRO SWITCH



- NOTES
- 1 - IT IS ESSENTIAL TO PREVENT ENTRANCE OF HARMFUL AGENTS THRU THE CONDUIT OPENING TO OBTAIN THE FULL BENEFIT OF THE SEALED CONSTRUCTION PROVIDED IN THIS UNIT
 - 2 - SWITCH IS ASSEMBLED FOR ACTUATION IN EITHER DIRECTION
 - 3 - LEVER MAY BE POSITIVELY LOCKED AT INTERVALS OF APPROX 0.4° (870 POSITIONS)
 - 4 - LEVER MAY BE ADJUSTED TO ACTUATE THE SWITCH IN THE CLOCKWISE DIRECTION ONLY, THE COUNTER-CLOCKWISE DIRECTION ONLY, OR IN BOTH DIRECTIONS
 - 5 - TO CONVERT SWITCH FOR ACTUATION IN EITHER CLOCKWISE OR COUNTER-CLOCKWISE DIRECTION ONLY, REMOVE THE HEAD AND SLIDE THE CAM TOWARD THE REAR OF THE HEAD SUFFICIENTLY TO DISENGAGE FROM THE FLATS ON THE SHAFT. ROTATE THE CAM 90° IN THE OPPOSITE DIRECTION OF THE ACTUATION DESIRED AND RE-ENGAGE THE CAM WITH THE FLATS ON THE SHAFT

151ML1
 DRAWING NUMBER
 ISSUE
 X 8 12
 REVISIONS
 A CO11247
 D M W
 12 MAR 58
 B CO12789
 M B F
 15 MAY 58
 C CO18841
 H B W
 21 JAN 59
 D CO20578
 M B F
 DEC 59
 E CO28084
 M B F
 25 JUNE 69
 F CO
 52124-D
 T S X
 23 SEPT 63
 G CO55051-B
 J A P
 17 DEC 64
 H CO74287
 G J W
 22 APR 93
 Q M W 12 MAR 58
 CHECK GCH APR 58
 CHECK K.F.M. 4 APR 58
 RELEASE NO.

CHARACTERISTICS	ELECTRICAL DATA (IMNI)	SCALE 1/2 TO 1
OPERATING FORCE-----3 LBS. MAX.	CONTACT ARRANGEMENT TWO CIRCUIT DOUBLE THROW DOUBLE BREAK	DO NOT SCALE PRINT
FULL OVERTRAVEL FORCE-----4 LBS. MAX.		UNLESS OTHERWISE SPECIFIED
RELEASE FORCE-----1/4 LB. MIN.	10A-120, 240, 480, OR 600 VAC 1/2 HP-120 VAC, 1 HP-240 VAC 0.8 A-115 VDC, 0.4 A-230 VDC PILOT DUTY 600 VAC MAX	DIMENSIONS ARE IN INCHES
PRETRAVEL-----③-----15° MAX.		TOLERANCES ARE
DIFFERENTIAL TRAVEL-----④-----7° MAX.		ONE PLACE (.0) ±.000
OVERTRAVEL-----⑤-----60° MIN.		TWO PLACE (.00) ±.005
SWITCH-BASIC REPLACEMENT-----IMNI	THREE PLACE (.000) ±.000	ANGLED ±
	WEIGHT	

