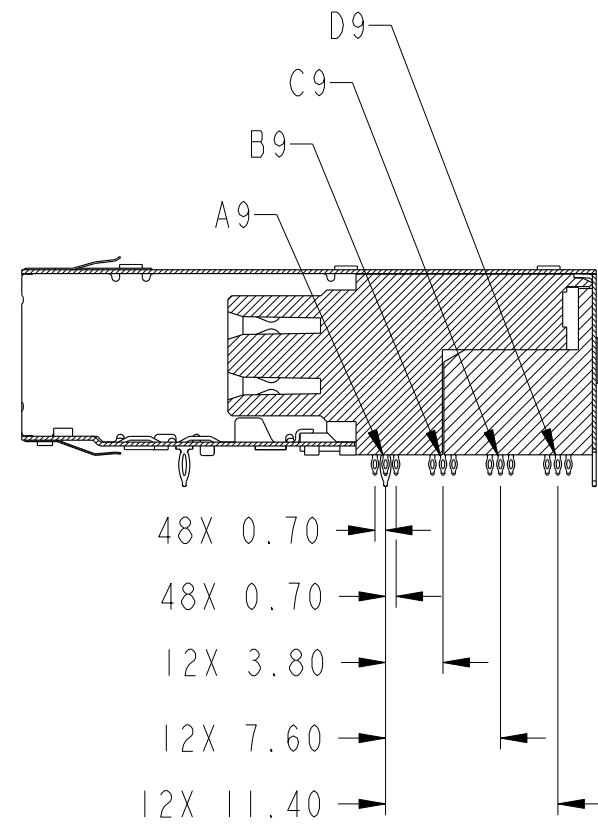
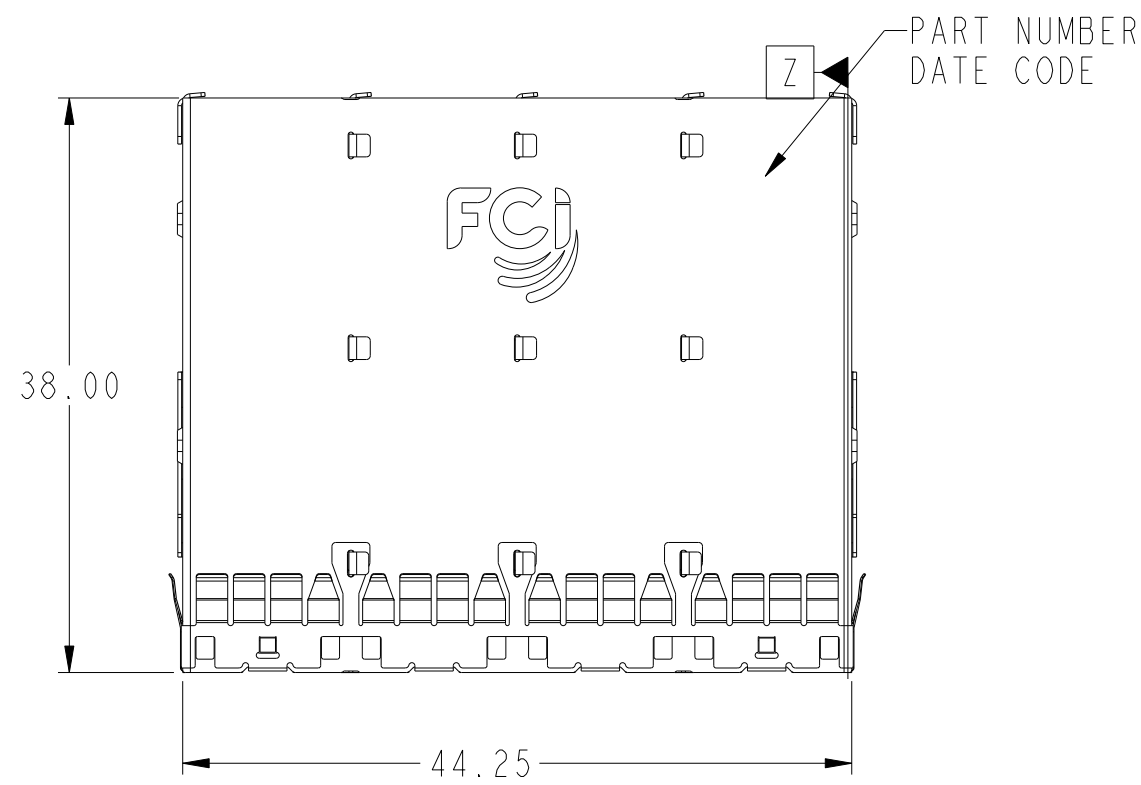
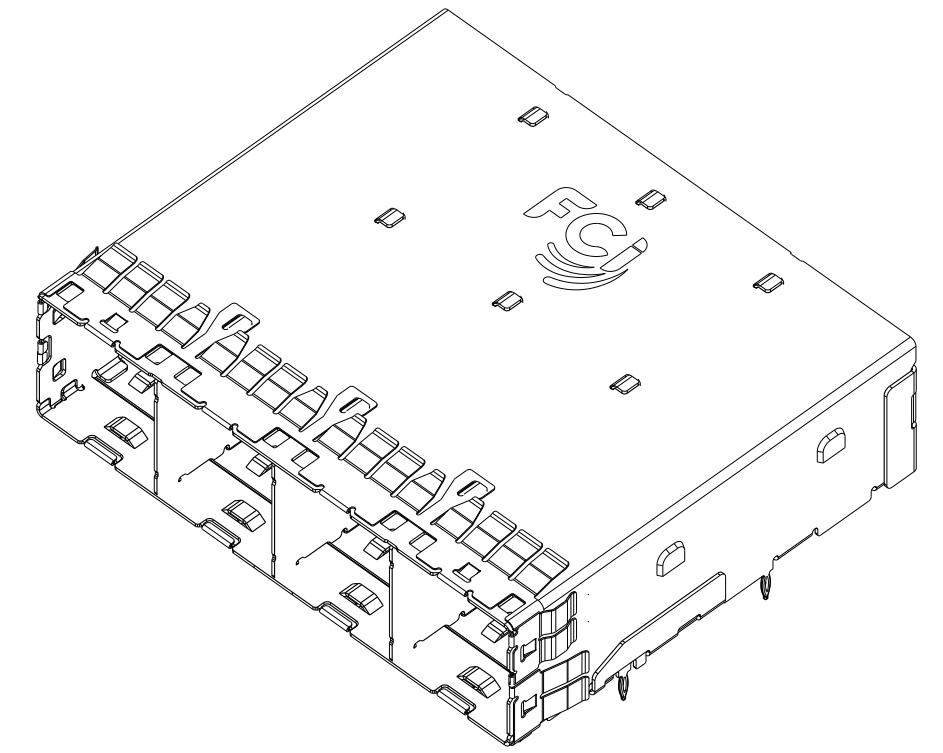


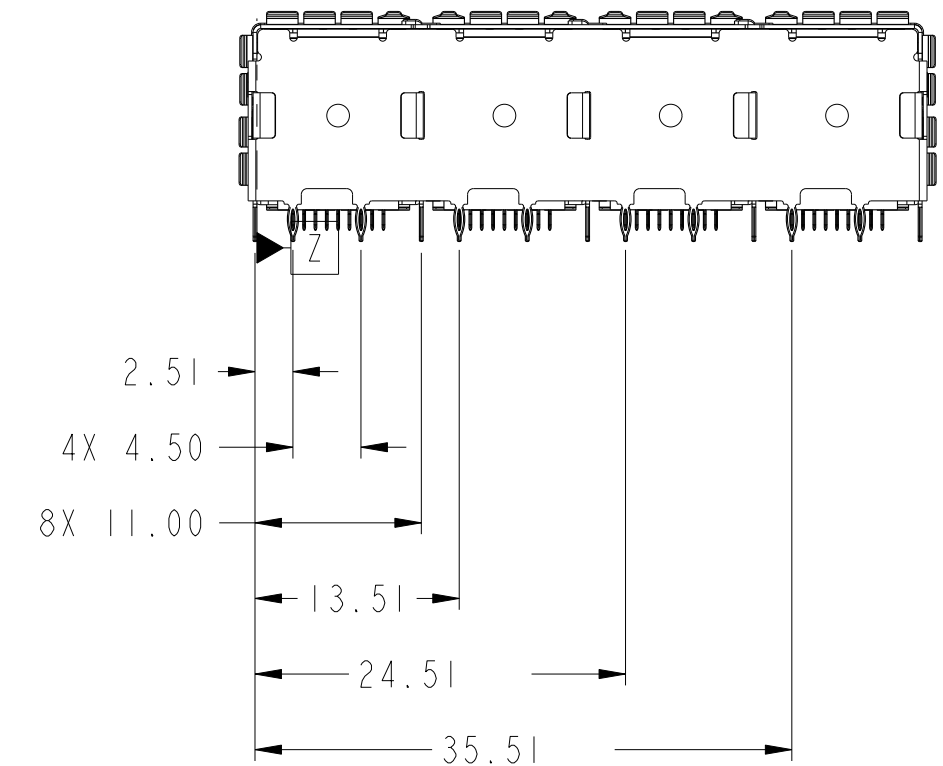
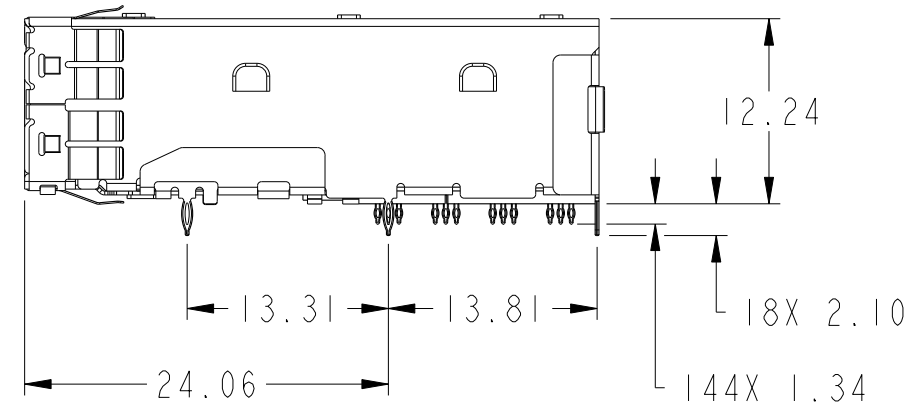
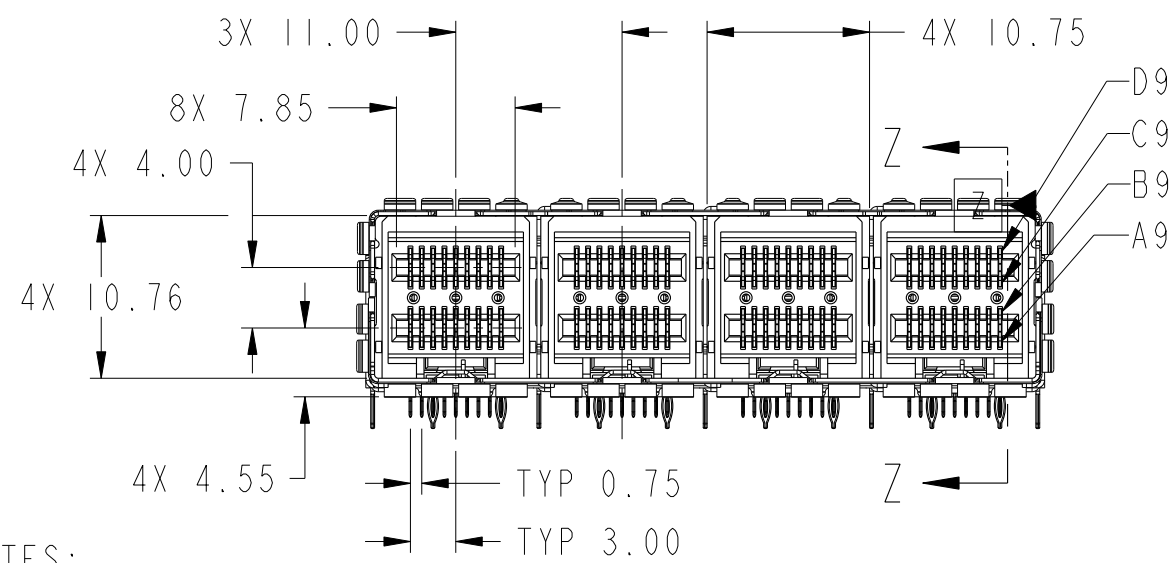
PRODUCT NUMBER	TAIL PLATING OPTION, SEE NOTE 2	DESCRIPTION
10112628-101	OPTION 1	WITHOUT STOPS
10112628-101LF	OPTION 2	WITHOUT STOPS
10112628-102	OPTION 1	WITH STOPS
10112628-102LF	OPTION 2	WITH STOPS



SECTION Z-Z
SCALE 2:1



10112628-101 & 101LF
WITHOUT STOPS



NOTES:

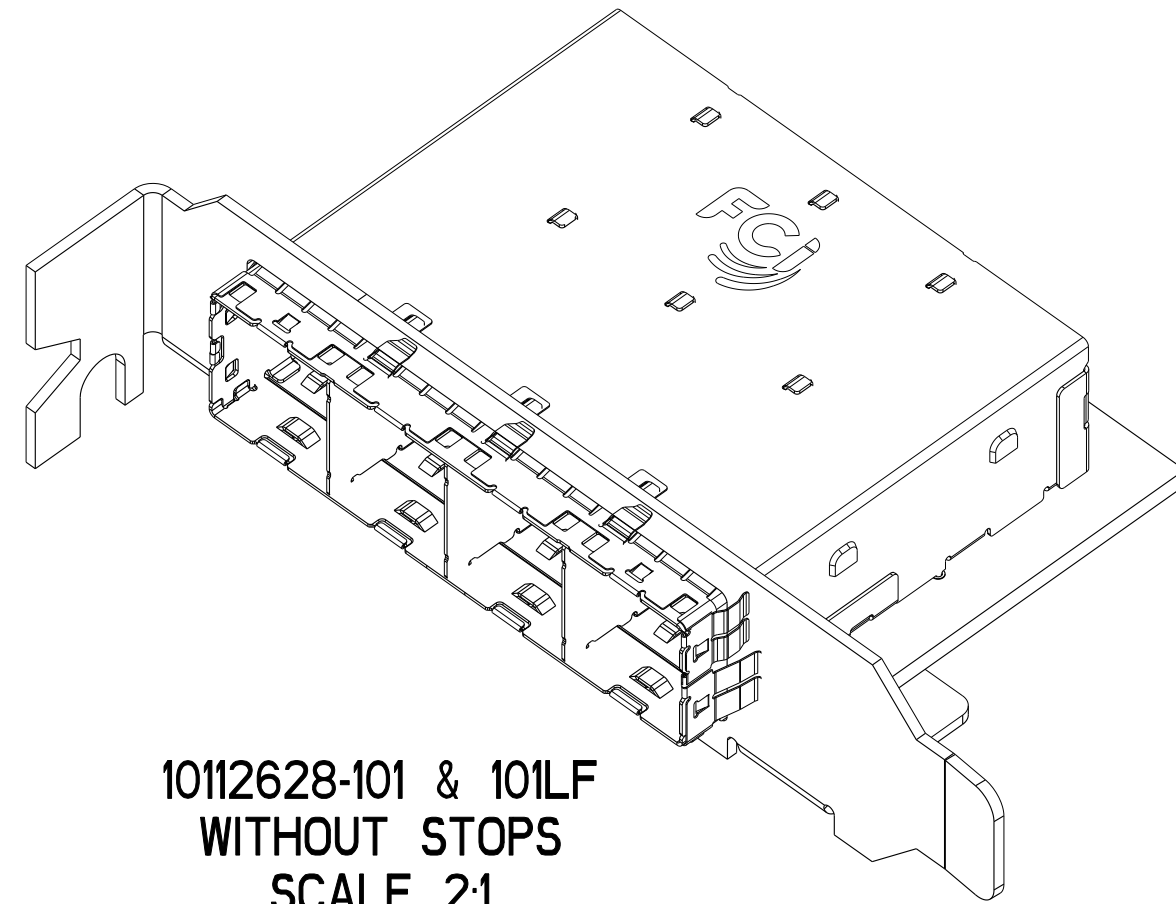
- MATERIALS:
CONNECTOR HOUSING: HIGH TEMPERATURE THERMOPLASTIC
GLASS FILLED, UL 94V-0
EMI CAGE: NICKEL SILVER ALLOY
EMI FINGERS: COPPER ALLOY
TERMINALS: COPPER ALLOY
- FINISHES:
EMI FINGERS: 0.50µm MIN NICKEL
CONTACT AREA: 0.76µm MIN GOLD OVER 2.54µm MIN NICKEL
TAIL AREA:
OPTION 1: 0.76µm - 1.52µm TIN/LEAD (90/10) OVER 2.54µm MIN NICKEL
OPTION 2: 0.76µm - 1.52µm TIN (LEAD FREE) OVER 2.54µm MIN NICKEL
- PRODUCT SPECIFICATION: GS-12-651
APPLICATION SPECIFICATION: GS-20-0327
- MOUNTING HARDWARE: M2X0.4 BUTTON HEAD SCREW
MOUNTING SCREW LENGTH: BOARD THICKNESS + 1.4mm MAX (0.9mm MIN).
4 REQUIRED PER ASSEMBLY
- THIS CONNECTOR IS DESIGNED TO MEET THE REQUIREMENTS OF
INDUSTRY SPECIFICATION SFF-8644.
- THE USE OF A PCI BRACKET OR EQUIVALENT IS REQUIRED FOR THIS PRODUCT
- A \triangle SYMBOL WILL BE NEXT TO ANY DIMENSION, VIEW OR NOTE THAT
HAVE BEEN MODIFIED WITH THE CURRENT DRAWING REVISION.

MATES WITH MINI-SAS HD ENDS IN:
10112041 SERIES (4X)
10117771 SERIES (4X)
10117946 SERIES (4X)
10117949 SERIES (4X)
10117947 SERIES (8X)
10112359 SERIES (8X)
10117950 SERIES (8X)
10117948 SERIES (8X)

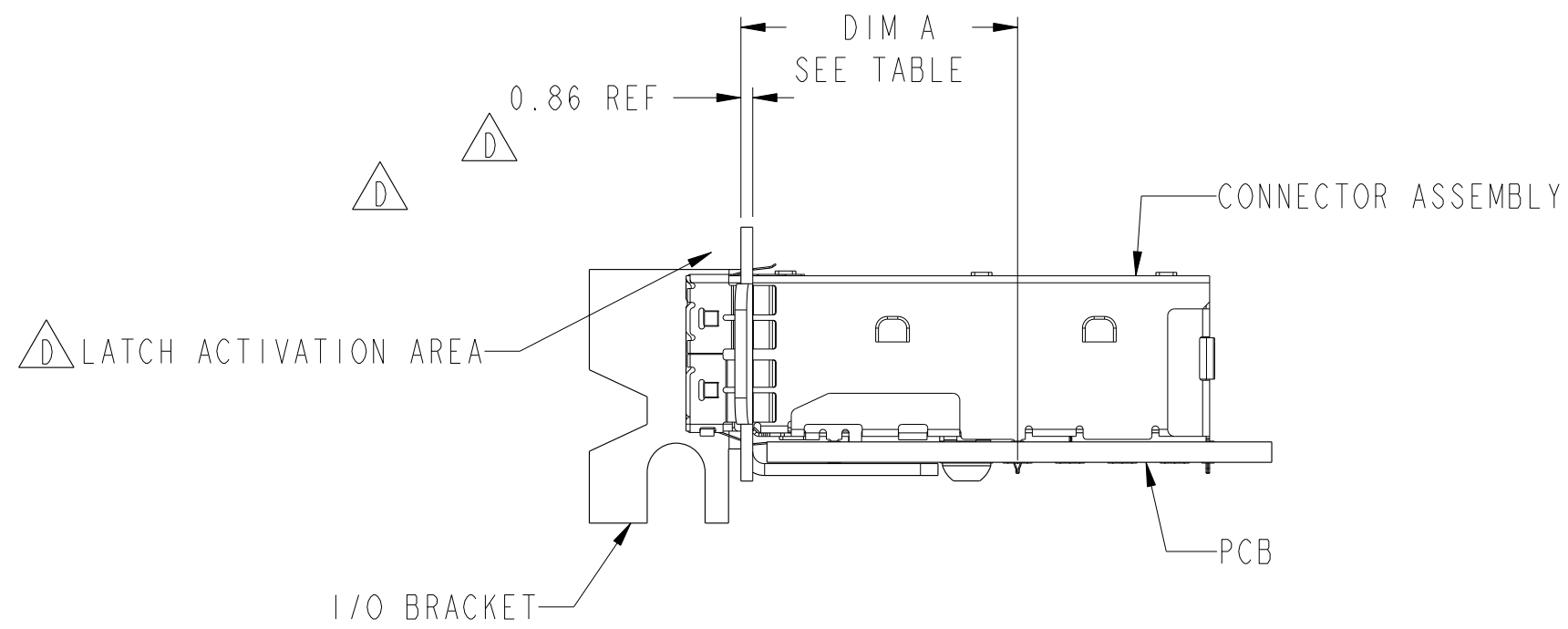
spec ref	-	dr	Mark Gray	2010/08/04	projection	MM	size	A2	scale	4:1												
tolerance std	ASME Y14.5	eng	David Humbert	2012/06/27			ecn no	ELX-V-012039-1														
	TOLERANCES UNLESS OTHERWISE SPECIFIED	chr	-	rel level			Released															
surface	<table border="1"> <tr><td>linear</td><td>0.X</td><td>±0.25</td></tr> <tr><td></td><td>0.XX</td><td>±0.13</td></tr> <tr><td></td><td>0.XXX</td><td>±</td></tr> <tr><td>angular</td><td>0°</td><td>±1/2°</td></tr> </table>	linear	0.X	±0.25		0.XX	±0.13		0.XXX	±	angular	0°	±1/2°	appr	Brad Brubaker	2012/06/27	product family	1x4 EXTERNAL ASSEMBLY			rev	D
linear	0.X	±0.25																				
	0.XX	±0.13																				
	0.XXX	±																				
angular	0°	±1/2°																				
ASME Y14.5		www.fci.com	cat. no.	-	Product - Customer Drw	sheet 1 of 7																

APPLICATION	DIM A
PCI ADD-IN CARD	19.00 ± 0.15
ALL OTHER APPLICATIONS	20.08 ± 0.15

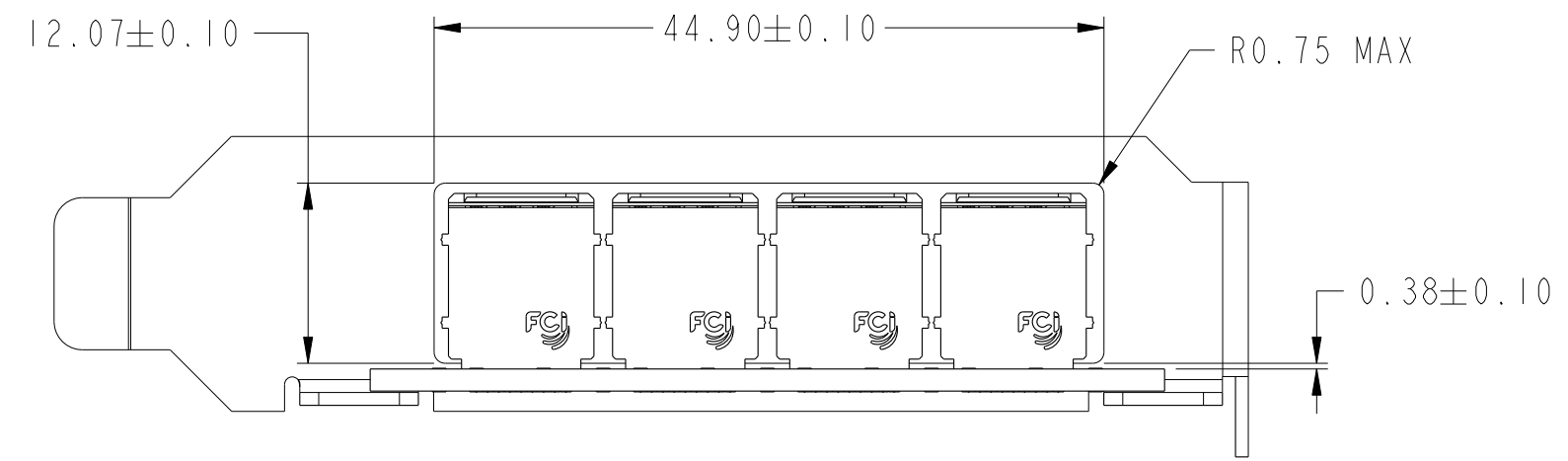
I/O BRACKET CUT OUT
(BRACKET NOT SUPPLIED)
SEE NOT 6



10112628-101 & 101LF
WITHOUT STOPS
SCALE 2:1



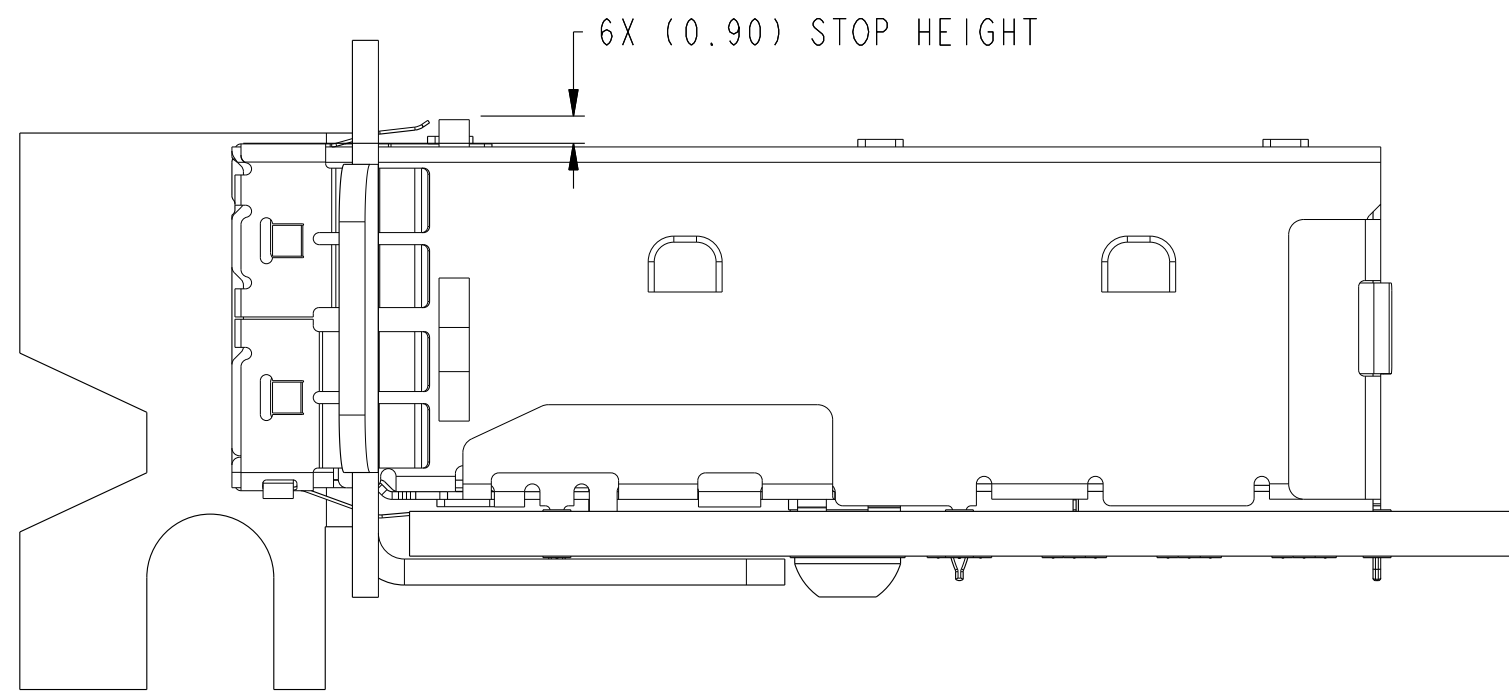
ASSEMBLED VIEW
WITHOUT STOPS
SCALE 2:1



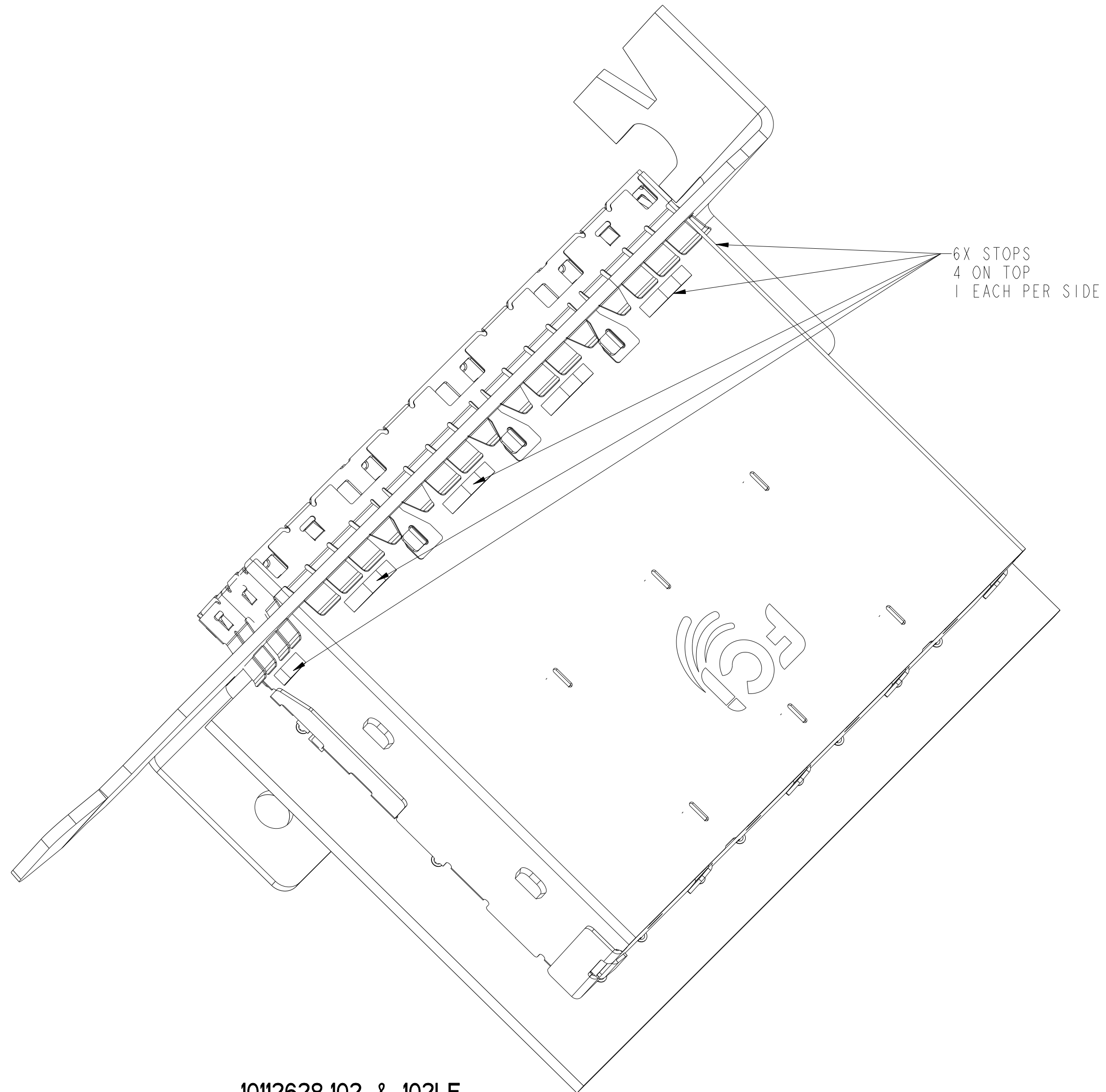
spec ref	-	dr	Mark Gray	2010/08/04	projection	MM	size	A2	scale	12:1		
tolerance std	ASME Y14.5	eng	David Humbert	2012/06/27			ecn no	ELX-V-012039-1				
TOLERANCES UNLESS OTHERWISE SPECIFIED		chr	-	appr			Brad Brubaker	2012/06/27	product family	-	rel level	Released
surface	✓			title			1x4 EXTERNAL ASSEMBLY		dwg no	10112628		rev
ASME Y14.5	angular	0°	±1/2°	www.fci.com	cat. no.	-	Product - Customer Drw	sheet 2 of 7				

1 2 3 4 5 6 7 8

A
B
C
D
E
F



ASSEMBLED VIEW
WITH STOPS
SCALE 4:1



10112628-102 & 102LF
WITH STOPS
SCALE 4:1

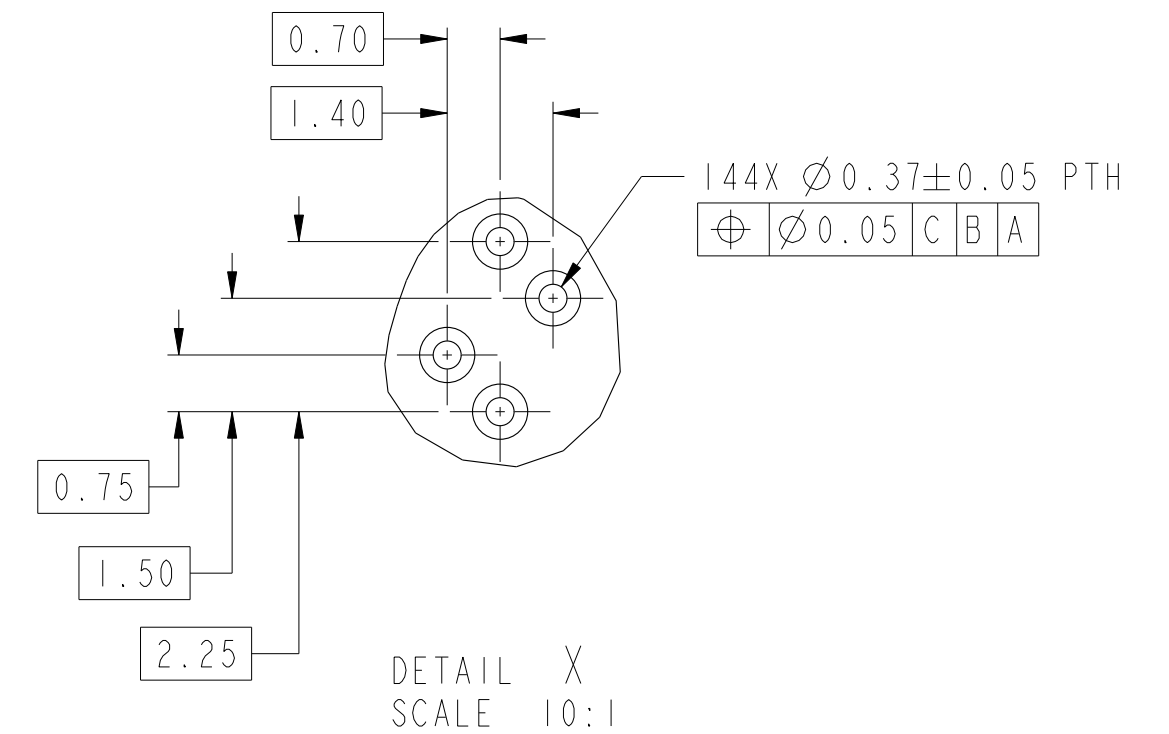
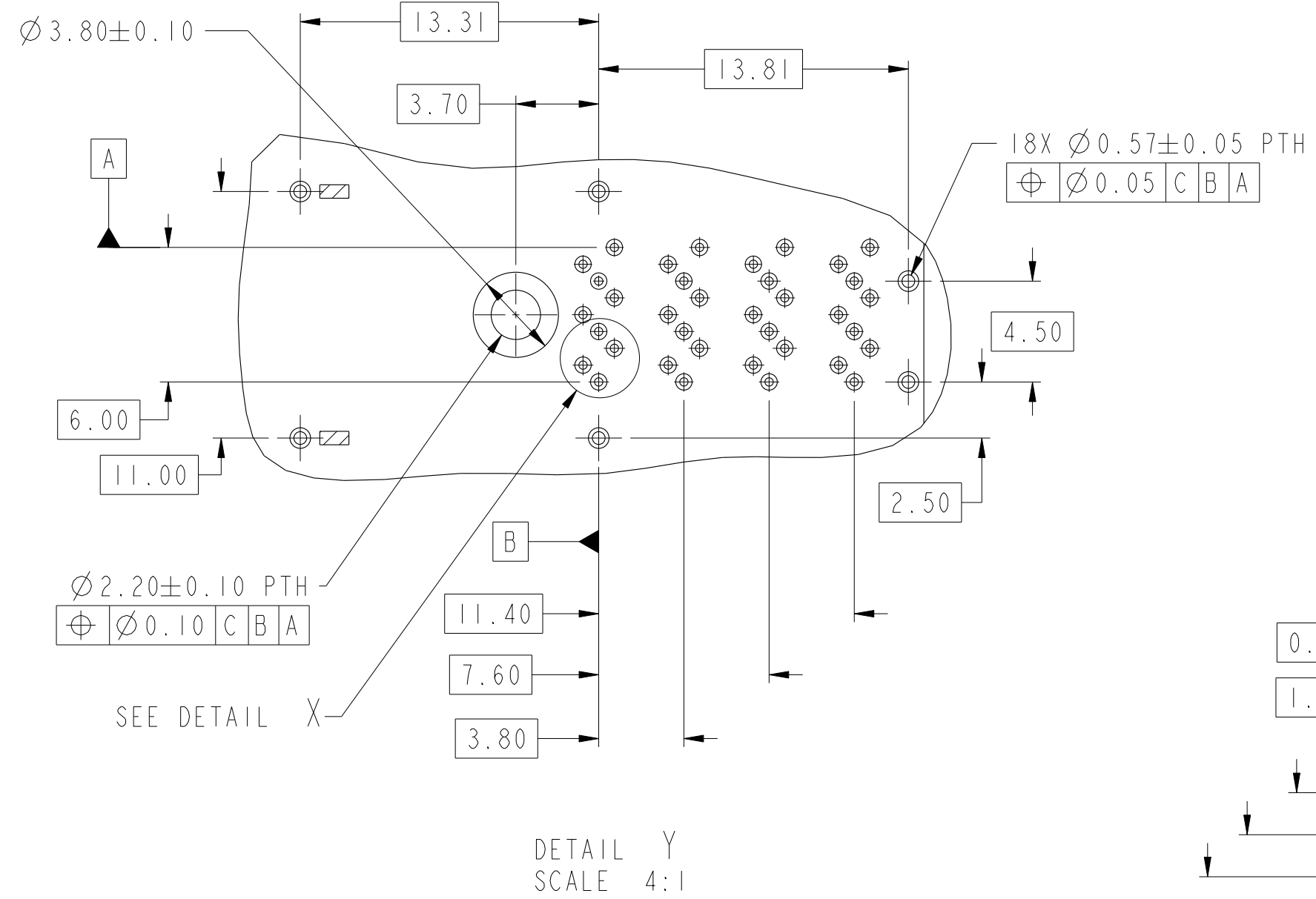
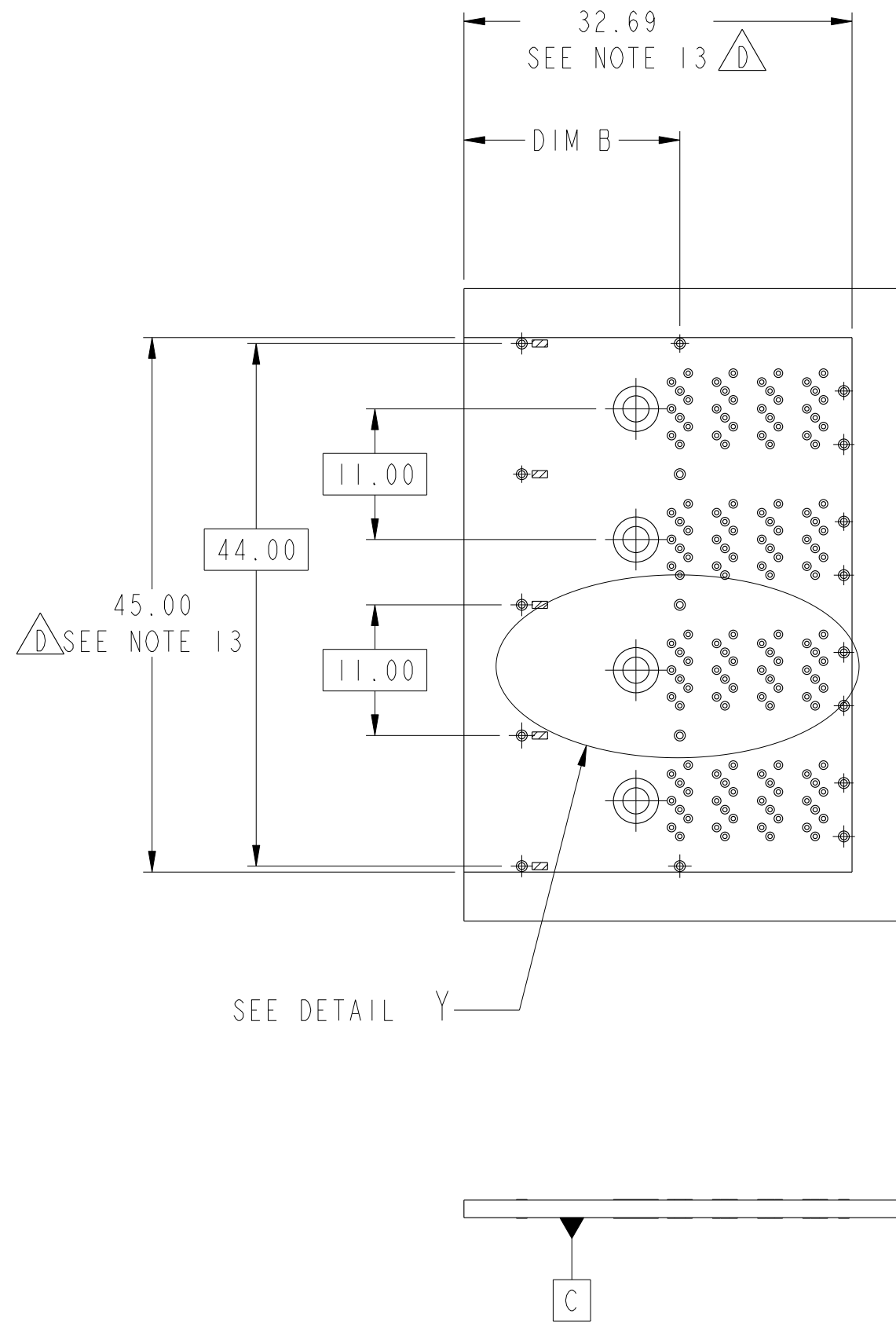
spec ref	-	dr	Mark Gray	2010/08/04	projection	MM	size	A2	scale	1:1												
tolerance std	ASME Y14.5	eng	David Humbert	2012/06/27			ecn no	ELX-V-012039-1														
TOLERANCES UNLESS OTHERWISE SPECIFIED		chr	-	rel level			Released															
surface	<table border="1"> <tr> <td>linear</td> <td>0.X</td> <td>±0.25</td> </tr> <tr> <td></td> <td>0.XX</td> <td>±0.13</td> </tr> <tr> <td></td> <td>0.XXX</td> <td>±</td> </tr> <tr> <td>angular</td> <td>0°</td> <td>±1/2°</td> </tr> </table>	linear	0.X	±0.25				0.XX	±0.13		0.XXX	±	angular	0°	±1/2°	appr	Brad Brubaker	2012/06/27	product family	MINI-SAS HD	cat. no.	-
linear	0.X	±0.25																				
	0.XX	±0.13																				
	0.XXX	±																				
angular	0°	±1/2°																				
ASME Y14.5				title 1x4 EXTERNAL ASSEMBLY MINI-SAS HD		dwg no 10112628	rev D															



Copyright FCI.

APPLICATION	DIM B
PCI ADD-IN CARD	17.10 ± 0.15
ALL OTHER APPLICATIONS	18.19 ± 0.15

RECOMMENDED BOARD LAYOUT

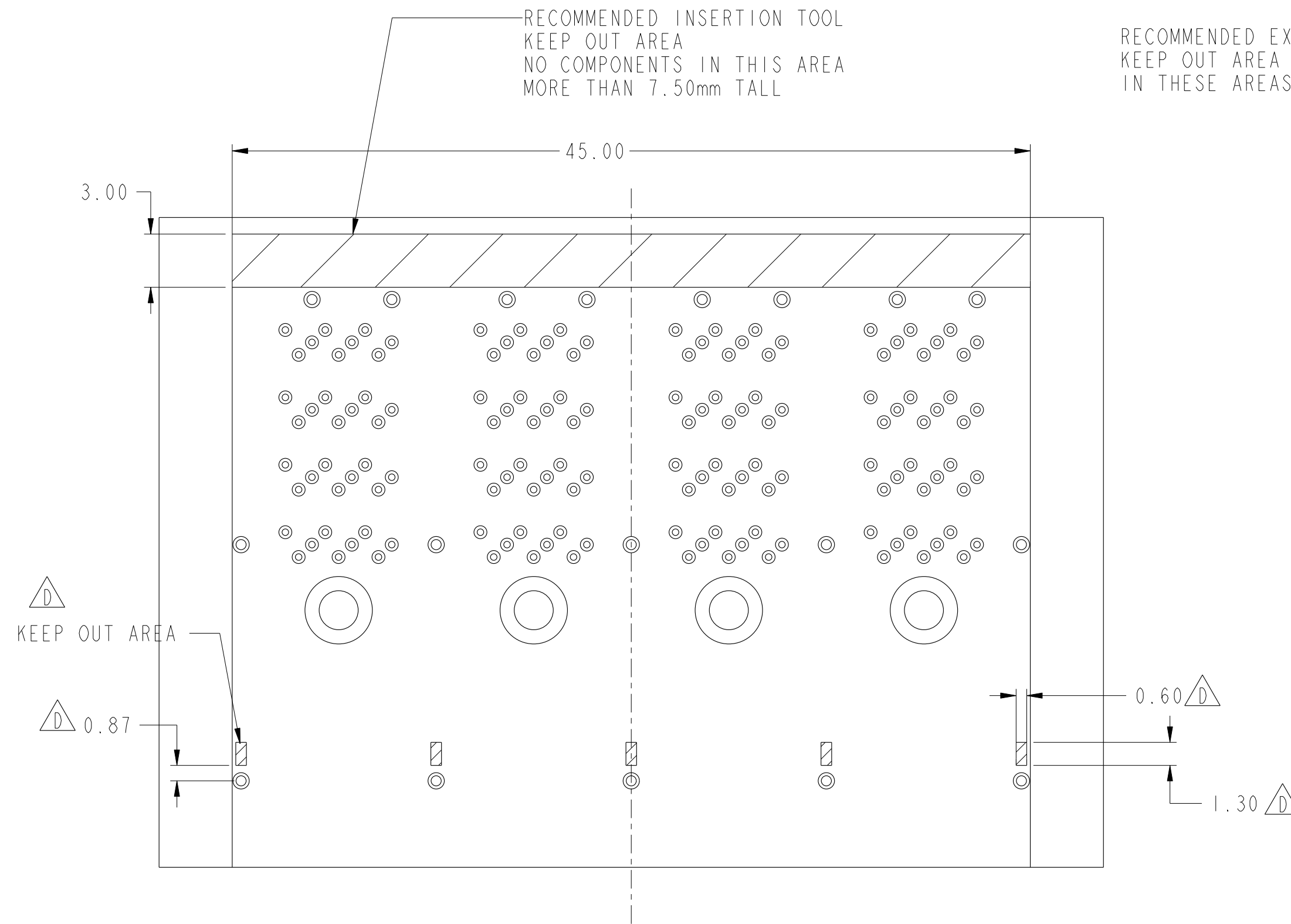


NOTES:

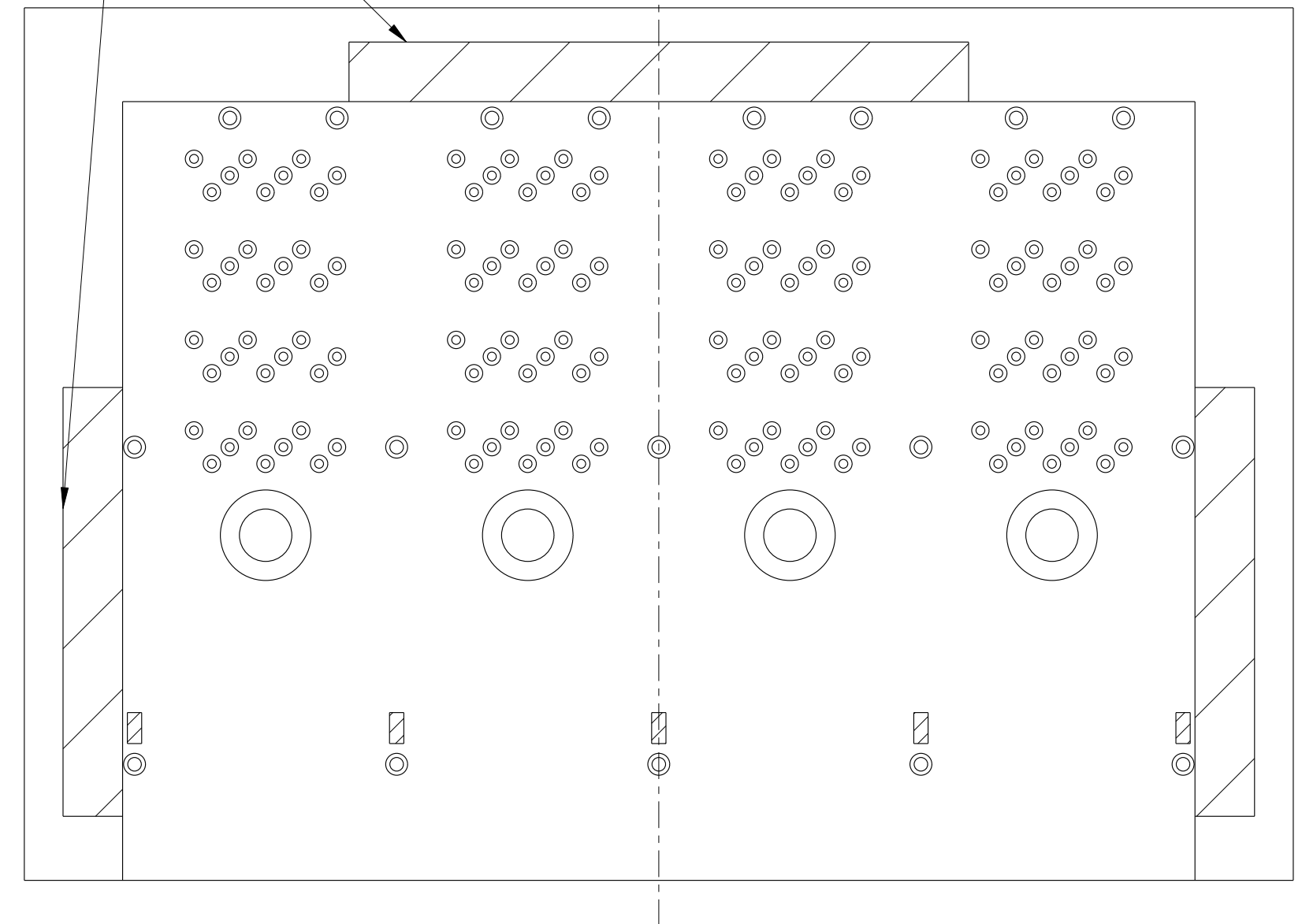
- RECOMMENDED DRILL SIZE FOR A Ø0.37 FINISHED PTH IS Ø0.457.
- RECOMMENDED ANNULAR RING AROUND Ø0.37 FINISHED PTH IS Ø0.73.
- RECOMMENDED DRILL SIZE FOR A Ø0.57 FINISHED PTH IS Ø0.68.
- RECOMMENDED ANNULAR RING AROUND A Ø0.57 FINISHED PTH IS Ø0.93.
- MINIMUM RECOMMENDED CENTER TO CENTER SPACING BETWEEN ADJACENT CONNECTORS: 47.00mm.
- CONNECTOR KEEP OUT AREA.
- MINIMUM PCB THICKNESS: 1.57mm.

spec ref	-	dr	Mark Gray	2010/08/04	projection	MM	size	A2	scale	12:1
tolerance std	ASME Y14.5	eng	David Humbert	2012/06/27			ecn no	ELX-V-012039-1		
TOLERANCES UNLESS OTHERWISE SPECIFIED		chr	-	rel level				Released		
		appr	Brad Brubaker	2012/06/27				product family	-	
surface	✓	linear	0.X	±0.25			1x4 EXTERNAL ASSEMBLY		dwg no	10112628
			0.XX	±0.13	www.fci.com		MINI-SAS HD		rev	D
		angular	0°	±1/2°	cat. no.		Product - Customer Drw		sheet 4 of 7	

RECOMMENDED TOOLING KEEP OUT AREAS



RECOMMENDED EXTRACTION TOOL
KEEP OUT AREA NO COMPONENTS
IN THESE AREAS



Copyright FCI.
FCI

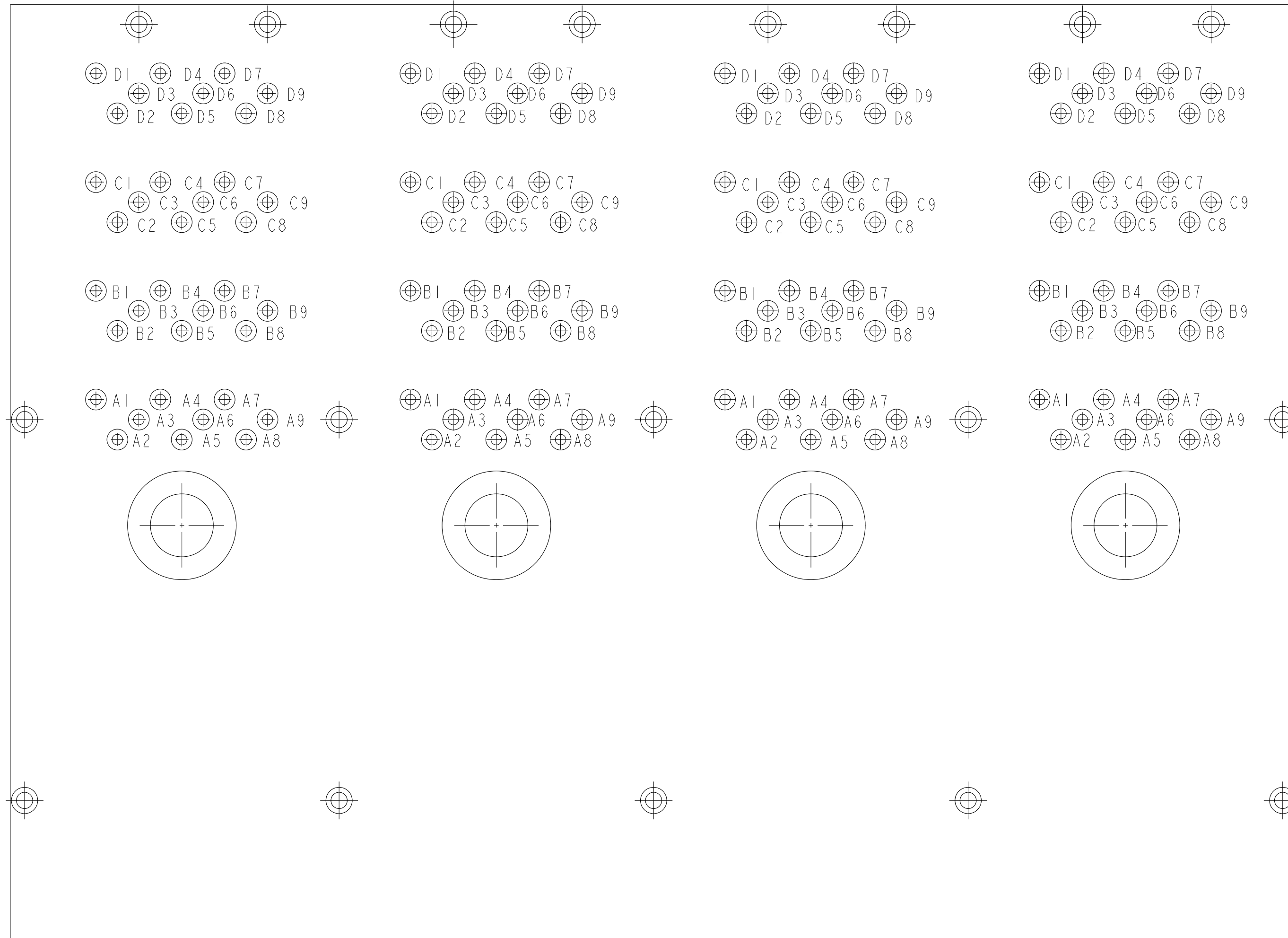
spec ref	-	dr	Mark Gray	2010/08/04	projection	MM	size	A2	scale	12:1										
tolerance std	ASME Y14.5	eng	David Humbert	2012/06/27			ecn no	ELX-V-012039-1												
TOLERANCES UNLESS OTHERWISE SPECIFIED		chr	-	rel level			Released													
surface	<table border="1"> <tr> <td>linear</td> <td>0.X</td> <td>±0.25</td> </tr> <tr> <td></td> <td>0.XX</td> <td>±0.13</td> </tr> <tr> <td></td> <td>0.XXX</td> <td>±</td> </tr> <tr> <td>angular</td> <td>0°</td> <td>±1/2°</td> </tr> </table>	linear	0.X	±0.25				0.XX	±0.13		0.XXX	±	angular	0°	±1/2°	appr	Brad Brubaker	2012/06/27	product family	-
linear	0.X	±0.25																		
	0.XX	±0.13																		
	0.XXX	±																		
angular	0°	±1/2°																		
ASME Y14.5		www.fci.com	cat. no.	-	Product - Customer Drw	sheet 5 of 7														

PDS: Rev :D

STATUS:Released

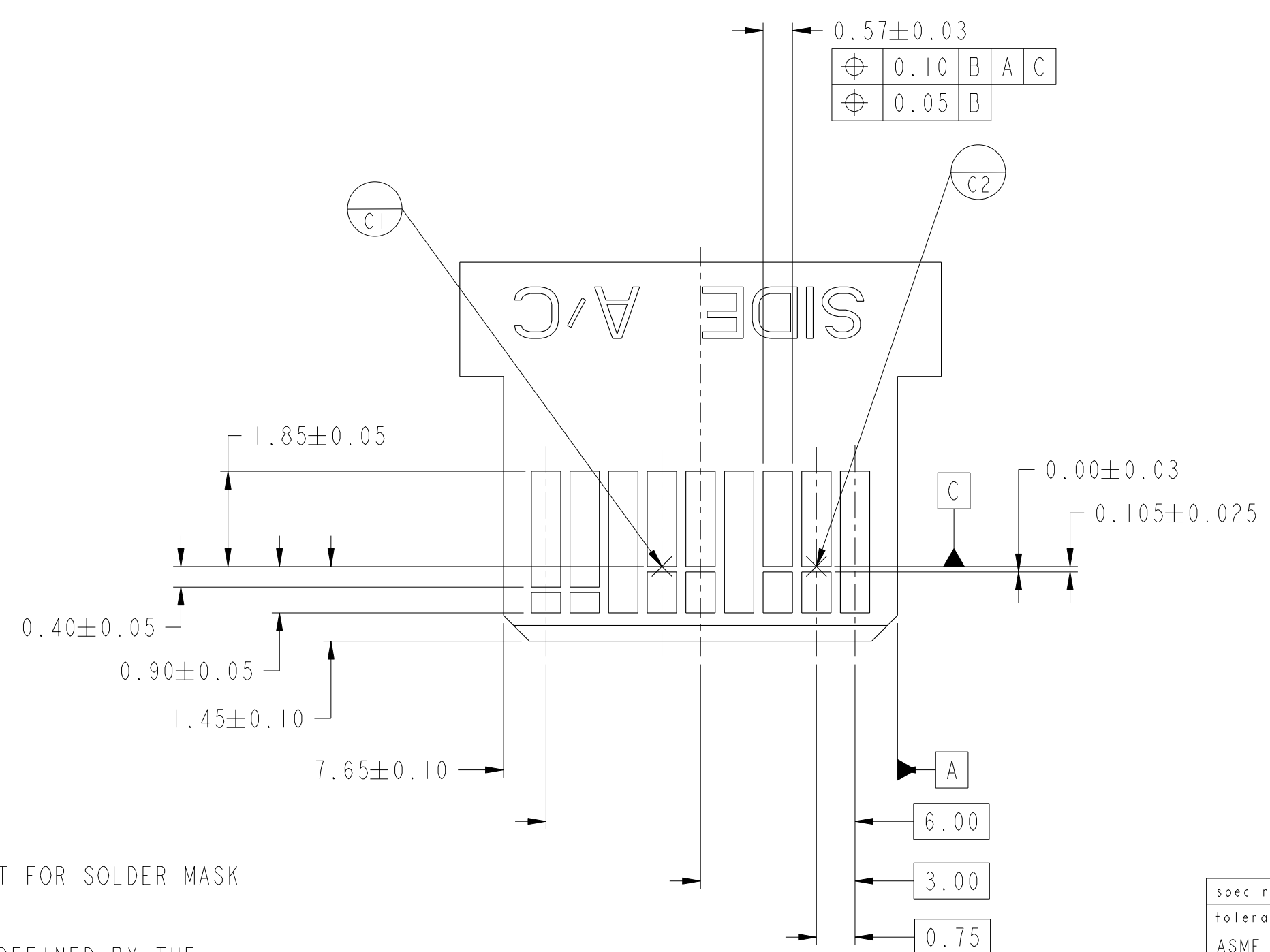
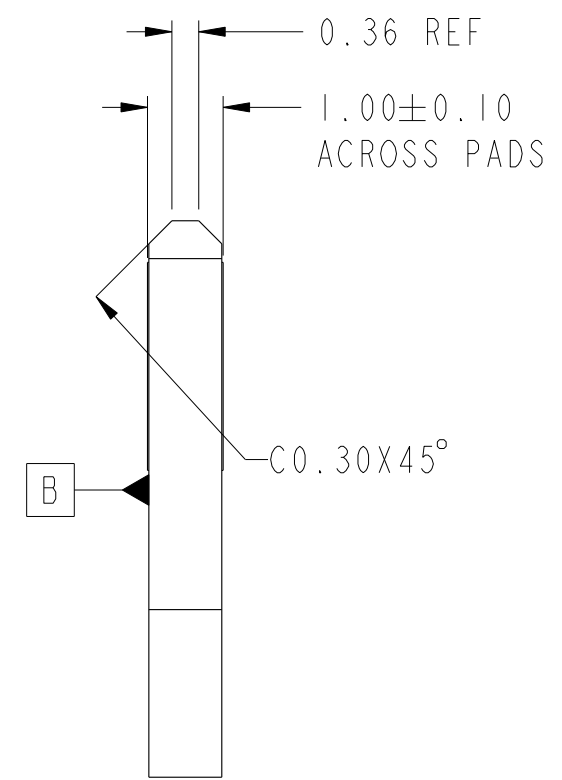
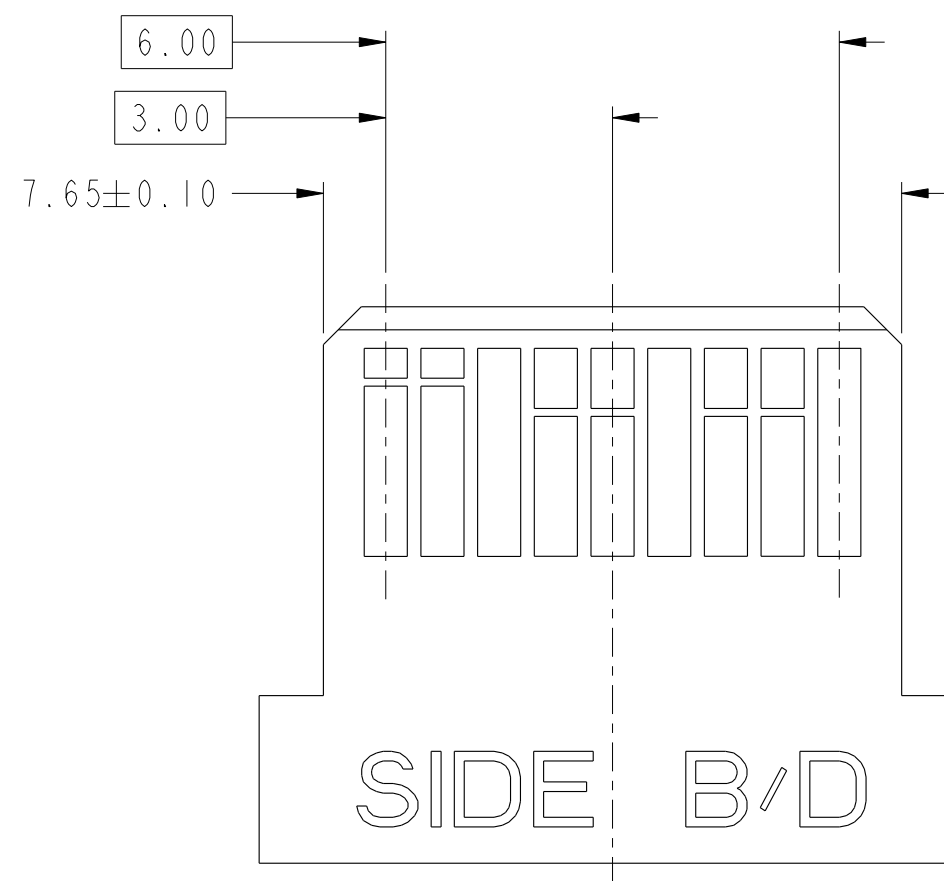
Printed: May 30, 2013

PIN OUT DESIGNATIONS



spec ref	-	dr	Mark Gray	2010/08/04	projection	MM	size	A2	scale	12:1								
tolerance std	ASME Y14.5	eng	David Humbert	2012/06/27			ecn no	ELX-V-012039-1										
	TOLERANCES UNLESS OTHERWISE SPECIFIED	chr	-	rel level			Released											
		appr	Brad Brubaker	2012/06/27			product family	-										
surface	<table border="1"> <tr> <td>linear</td> <td>0.X</td> <td>±0.25</td> </tr> <tr> <td></td> <td>0.XX</td> <td>±0.13</td> </tr> <tr> <td></td> <td>0.XXX</td> <td>±</td> </tr> <tr> <td>angular</td> <td>0°</td> <td>±1/2°</td> </tr> </table>	linear	0.X	±0.25		0.XX	±0.13		0.XXX	±	angular	0°	±1/2°		title 1x4 EXTERNAL ASSEMBLY MINI-SAS HD		dwg no 10112628	rev D
linear	0.X	±0.25																
	0.XX	±0.13																
	0.XXX	±																
angular	0°	±1/2°																
ASME Y14.5	www.fci.com	cat. no.	-	Product - Customer Drw	sheet 6 of 7													





- NOTES:
- 15. 0.05 MINIMUM KEEP OUT FOR SOLDER MASK AROUND ALL PADS.
 - 16. DATUM C TARGETS ARE DEFINED BY THE RESPECTIVE PAD CENTER LINES AND THE LEADING EDGE OF THE TARGET PADS.

spec ref	-	dr	Mark Gray	2010/08/04	projection	MM	size	A2	scale	12:1
tolerance std	ASME Y14.5	eng	David Humbert	2012/06/27	chr	-	ecn no	ELX-V-012039-1	rel level	Released
surface	✓	appr	Brad Brubaker	2012/06/27	product family	-	cat. no.	10112628	rev	D
ASME Y14.5	linear	0.X	±0.25	0.XX	±0.13	0.XXX	±	angular	0°	±1/2°



Copyright FCI.