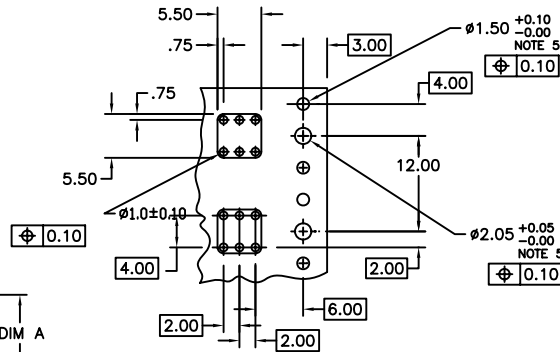
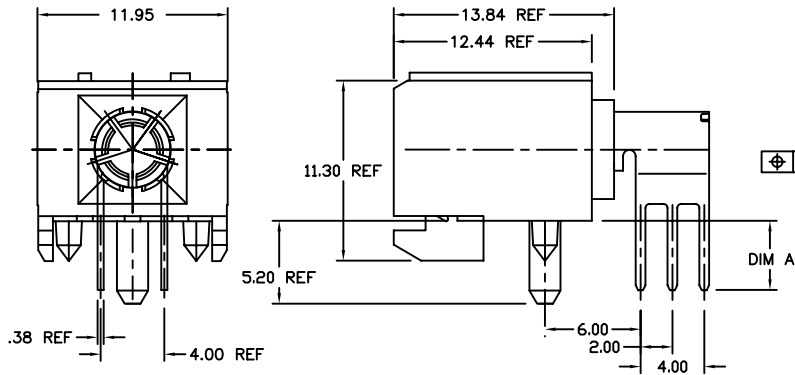


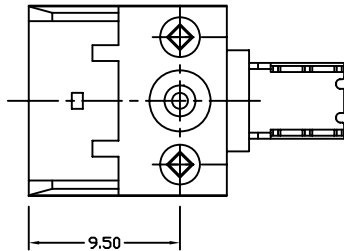
PRODUCT NO.	PCB THICKNESS	DIM A
70424-002	2.4	3.5
70424-003	1.6	2.7
70424-002LF	2.4	3.5
70424-003LF	1.6	2.7



RECOMMENDED PC BOARD HOLE PATTERN (COMPONENT SIDE)

NOTES:

1. BODY MATERIAL: LCP, 30% GLASS-FILLED, FLAME RETARDANT, ACC, UL94-V0
2. TERMINAL MATERIAL: BeCu
3. PLATING SOLDER TAILS: FOR 70424-OXX SnPb
FOR 70424-OXXLF Sn (LEAD FREE)
4. PLATING CONTACT AREA: 0.80µm Au OVER 1.3µm Ni.
5. INDICATED HOLES ARE UNPLATED
6. PRODUCT MARKETING: PART NUMBER & BATCH I.D.
7. THE PRODUCTS WHERE THE PART NUMBER ENDS IN "LF" MEET THE EUROPEAN DIRECTIVES AND OTHER COUNTRY REGULATIONS AS DESCRIBED IN GS-22-008.
8. ALL PRODUCTS WILL WITHSTAND EXPOSURE TO 260° FOR 60 SECONDS IN A CONVECTION, INFRA-RED OR VAPOR PHASE REFLOW OVEN.



mat'l. code		surface		tolerance		projection		product family	
		ASME Y14.5		ASME Y14.5				METRAL (tm)	
ltr	ec'n no	dr	date	tolerances unless otherwise specified		MM		title	
A	V61323	SAR	1996-09-03	angles	deg	X #3		POWER CONNECT. ASS'Y	
B	V61725	SAR	1996-11-18			XX #18		W/ METRAL HSG 70292	
C	V81212	MDF	1998-06-17	0° ±2'		XXX #051		scale 1:1	
D	V01598	JWS	200-07-12	dr		S. ROYER 1996-09-03		dwg no sheet 1 of 1 size	
E	V05-0778	JRV	2005-08-15	engr		C. PENDLETON 1996-09-03		70424 A4	
F	V06-0808	JRV	2006-06-20	chr		C. PENDLETON 1996-09-03		type CUSTOMER Drawing	
sheet index		revision sheet		F 1					