

PART NUMBER	REV	FIRST USED	
852293-1	AH	122500-1	T-UNIT
852293-2	AH	680017-4	K-UNIT
852293-3	AH	354500-1	G-UNIT
852293-4	AH	122500-1	T-UNIT
852293-5	AH	ARA APPL	AMP ARA

- 1 RECOMMENDED SPARE PARTS
- 2 ITEMS NOT SHOWN
- 3 TOL ±.25

- 4 TO RUN THIS APPLICATOR ON THE AMPOMATOR SEE DOC. PACKAGE ITEM 146.
- 5 USE SEALANT PN 1-23419-5 AS SHOWN

- 7 AFTER QUALIFICATION , DRILL AND PIN ITEM 2 TO ITEM 1 USING ITEM 169, 2 PLACES. (-4 ONLY)
- 8 GREASE LIGHTLY ITEMS 8 AND 9.
- 9 CANNOT RUN 2 WIRES ON LEADMAKER.

- 10 SPRING LOADED TONKER(PN 354853-1) MUST BE USED WHEN RUNNING APPLICATOR ON LEADMAKER.

THIS DRAWING IS A CONTROLLED DOCUMENT.

CRIMPING DATA				THIS APPLICATOR WILL APPLY	
PAD LETTER	CRIMP HEIGHT	WIRE SIZE	STRIP LENGTH	TERMINAL P/N	
A	.073	#14		520963	521547
B	.068	2 #18		521011	521848
C	.064	#16		521081	521997
D	.058	#18		521113	1969104
CRIMP	SIZE TYPE	FEED		521114	1969206
WIRE	.110 F	.760		521367	1969529
INS.	.180 F			521094	-
INSULATION RANGE	WIRE RANGE			521567	-
.120-.170	18-14	AI SHEET 8095 & 8098			
TERM APPL SPEC					
114-2124					

QTY	REQD	PER	ASSY	PARTS LIST	ITEM NO			
					187			
					186			
					185			
					184			
					183			
					182			
					181			
					180			
					179			
					178			
					177			
					176			
					175			
					174			
					173			
					172			
					171			
					170			
					169			
					168			
					167			
					166			
					165			
					164			
					163			
					162			
					161			
					160			
					159			
					158			
					157			
					156			
					155			
					154			
					153			
					152			
					151			
					150			
					149			
					148			
					147			
					146			
					145			
					144			
					143			
					142			
					141			
-5	-4	-3	-2	-1	U/M	PART NO	DESCRIPTION	ITEM NO

QTY	REQD	PER	ASSY	PARTS LIST	ITEM NO			
					140			
					139			
					138			
					137			
					136			
					135			
					134			
					133			
					132			
					131			
					130			
					129			
					128			
					127			
					126			
					125			
					124			
					123			
					122			
					121			
					120			
					119			
					118			
					117			
					116			
					115			
					114			
					113			
					112			
					111			
					110			
					109			
					108			
					107			
					106			
					105			
					104			
					103			
					102			
					101			
					100			
					99			
					98			
					97			
					96			
					95			
					94			
					93			
					92			
					91			
					90			
					89			
					88			
					87			
					86			
					85			
					84			
					83			
					82			
					81			
					80			
					79			
					78			
					77			
					76			
					75			
					74			
					73			
					72			
					71			
-5	-4	-3	-2	-1	U/M	PART NO	DESCRIPTION	ITEM NO

QTY	REQD	PER	ASSY	PARTS LIST	ITEM NO			
					70			
					69			
					68			
					67			
					66			
					65			
					64			
					63			
					62			
					61			
					60			
					59			
					58			
					57			
					56			
					55			
					54			
					53			
					52			
					51			
					50			
					49			
					48			
					47			
					46			
					45			
					44			
					43			
					42			
					41			
					40			
					39			
					38			
					37			
					36			
					35			
					34			
					33			
					32			
					31			
					30			
					29			
					28			
					27			
					26			
					25			
					24			
					23			
					22			
					21			
					20			
					19			
					18			
					17			
					16			
					15			
					14			
					13			
					12			
					11			
					10			
					9			
					8			
					7			
					6			
					5			
					4			
					3			
					2			
					1			
-5	-4	-3	-2	-1	U/M	PART NO	DESCRIPTION	ITEM NO

LOC A
DIST 66

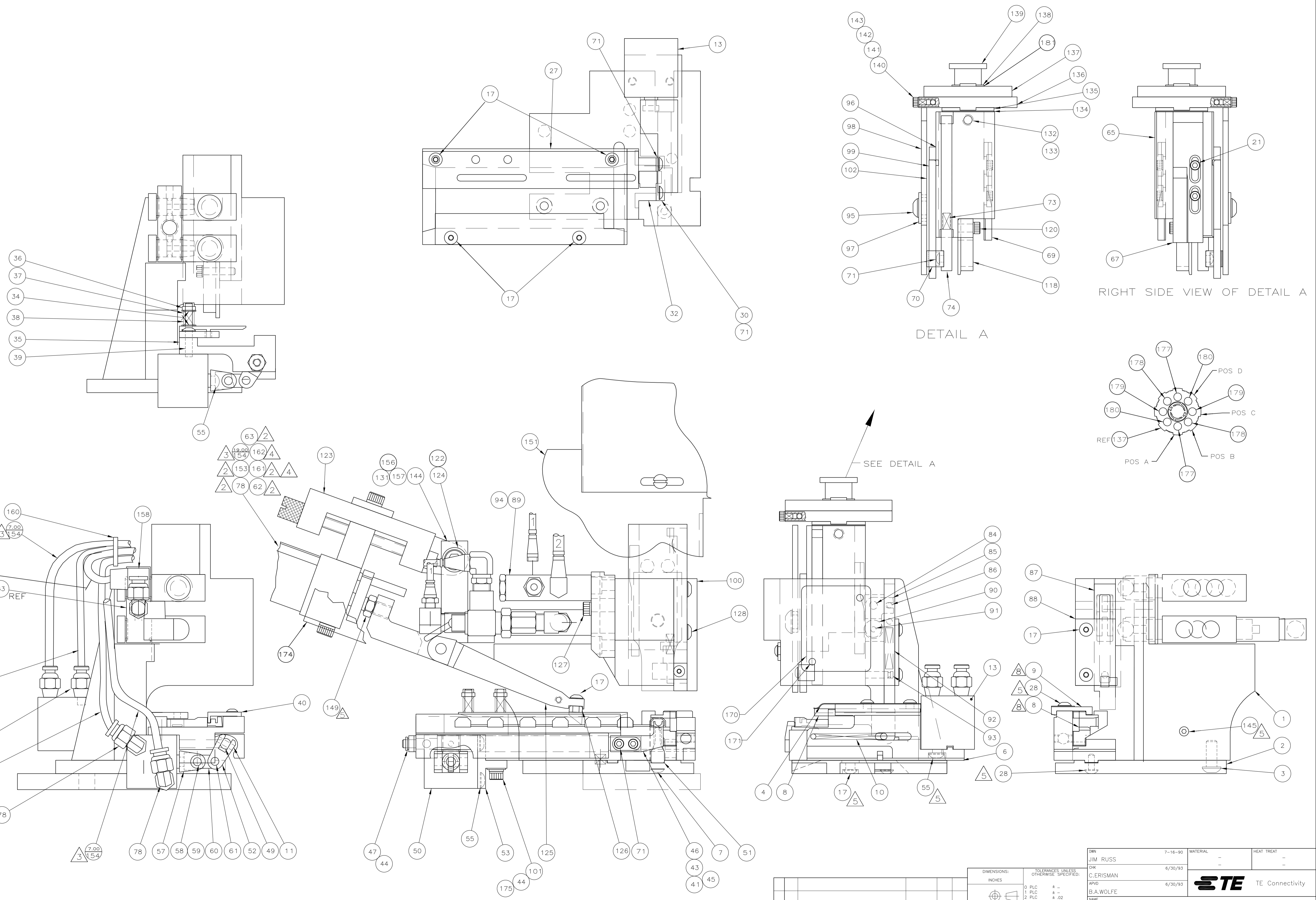
AWG	ECR-14-000592	1-2014	MY	GB	APVD	DATE	DWN	APVD	REVISION RECORD				
<table border="0"> <tr> <td> DIMENSIONS: INCHES </td> <td> TOLERANCES UNLESS OTHERWISE SPECIFIED: 0 PLC ±.02 1 PLC ±.01 2 PLC ±.005 3 PLC ±.005 4 PLC ±.0005 </td> </tr> <tr> <td> ANGLE: ± SURFACE TEXTURE: </td> <td> SCALE: 1:1 SIZE: A1 DRAWING NO: 852293 SHEET 1 of 2 REV: AH6 </td> </tr> </table>										DIMENSIONS: INCHES 	TOLERANCES UNLESS OTHERWISE SPECIFIED: 0 PLC ±.02 1 PLC ±.01 2 PLC ±.005 3 PLC ±.005 4 PLC ±.0005	ANGLE: ± SURFACE TEXTURE:	SCALE: 1:1 SIZE: A1 DRAWING NO: 852293 SHEET 1 of 2 REV: AH6
DIMENSIONS: INCHES 	TOLERANCES UNLESS OTHERWISE SPECIFIED: 0 PLC ±.02 1 PLC ±.01 2 PLC ±.005 3 PLC ±.005 4 PLC ±.0005												
ANGLE: ± SURFACE TEXTURE:	SCALE: 1:1 SIZE: A1 DRAWING NO: 852293 SHEET 1 of 2 REV: AH6												
DWN: JIM RUSS 7-16-90 CHK: C.ERISMAN 6/30/93 APVD: B.A.WOLFE 6/30/93 NAME: B.A.WOLFE ULTRA-POD APPLICATOR .250 STRAIGHT					MATERIAL: - HEAT TREAT: - TE Connectivity								

THIS DRAWING IS A CONTROLLED DOCUMENT.

THIS INFORMATION IS CONFIDENTIAL AND PROPRIETARY TO TE CONNECTIVITY AND ITS AFFILIATES. IT IS NOT TO BE DISCLOSED TO ANY OTHER PARTY WITHOUT THE WRITTEN AUTHORIZATION OF TE CONNECTIVITY.

LOC A
DIST 66

3308-8 (3/11)



REV	DESCRIPTION	DATE	BY	APPV	
-	SEE SHEET 1	-	-	-	
P	LTR	REVISION RECORD	DATE	DWN	APV

DIMENSIONS:		TOLERANCES UNLESS OTHERWISE SPECIFIED:	
INCHES	0 PLC	±	-
	1 PLC	±	-
	2 PLC	±	.02
	3 PLC	±	.005
	4 PLC	±	.0005
ANGLES:		SURFACE TEXTURE: ✓	

DWN	JIM RUSS	7-16-90	MATERIAL	-	HEAT TREAT	-			
CHK	C.ERISMAN	6/30/93							
APVD	B.A.WOLFE	6/30/93							
NAME	ULTRA-POD APPLICATOR .250 STRAIGHT								
SCALE	1:1	SIZE	A1	DRAWING NO	852293	SHEET	2 of 2	REV	AH6

CUSTOMER ACCESSIBLE PRODUCTION DRAWING