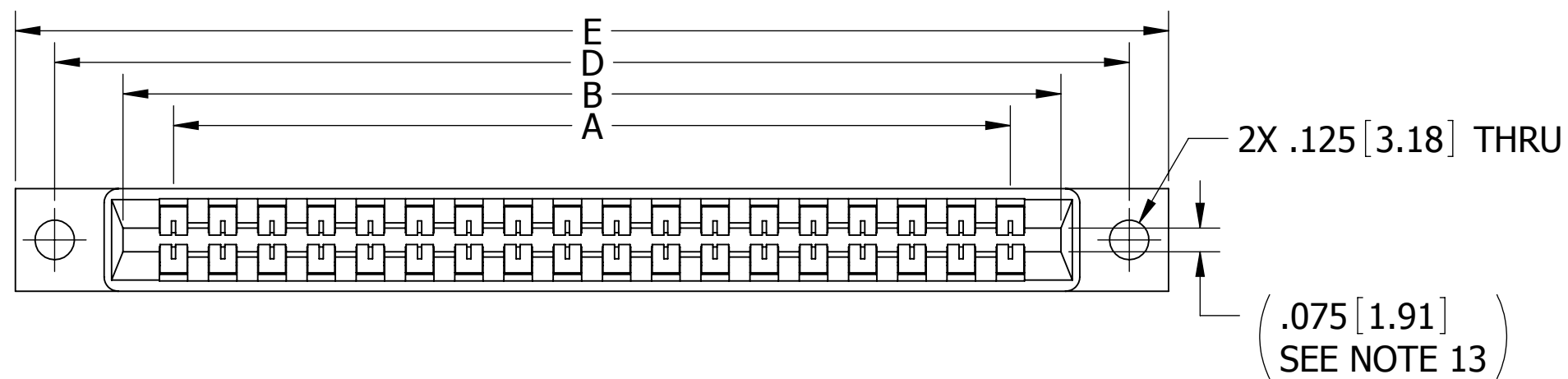
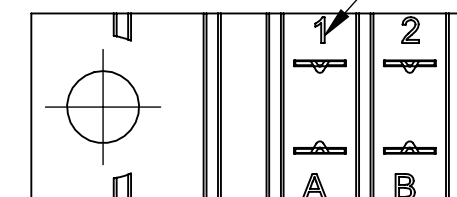


REVISIONS				
REV.	ECO. NO	DESCRIPTION	DATE	BY
A	1827	INITIAL RELEASE	10/21/08	ASK
B	2405	UPDATED P/N CODING TO INCLUDE MATERIAL & PLATING OPTIONS AND 'E' MODIFICATION CODE (OBSOLETE DWG# 11772)	7/12/2011	JH



CONTACT MARKINGS
(LETTERS G, I, O, & Q NOT USED)

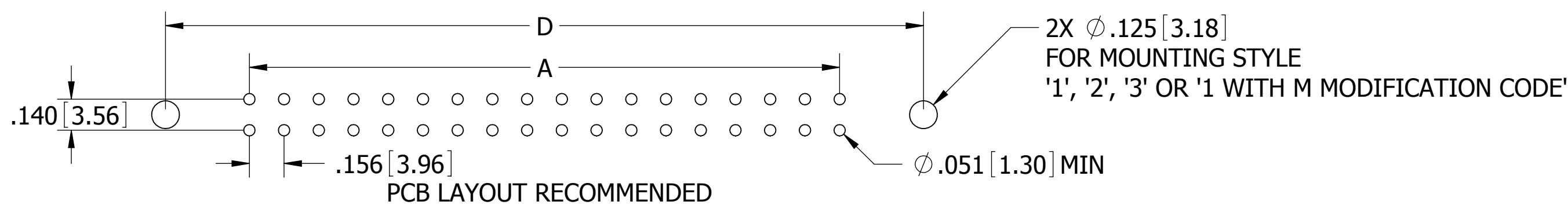
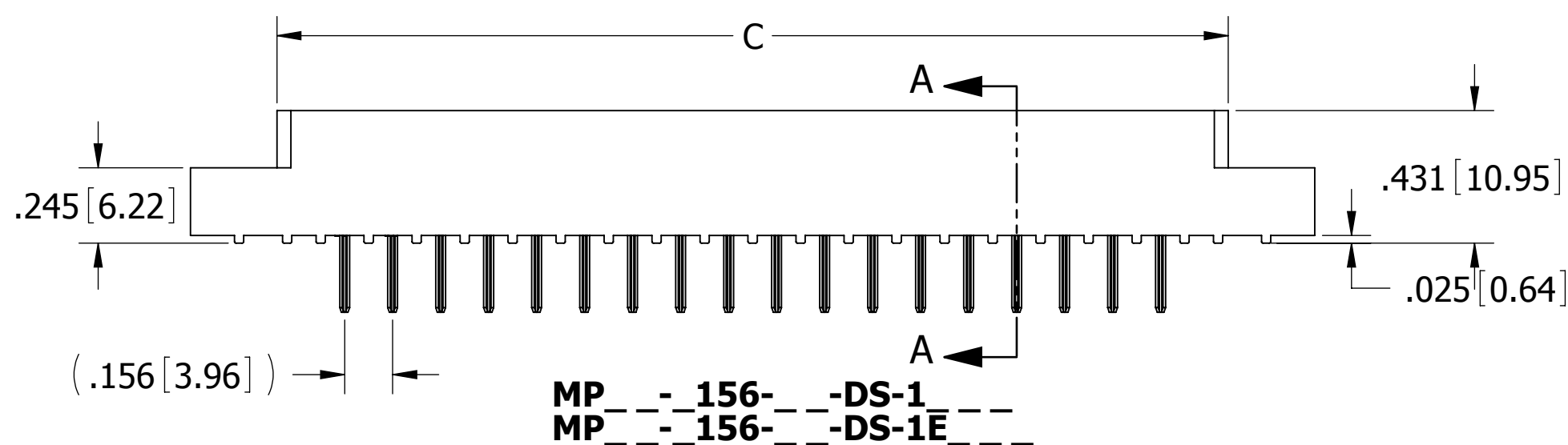
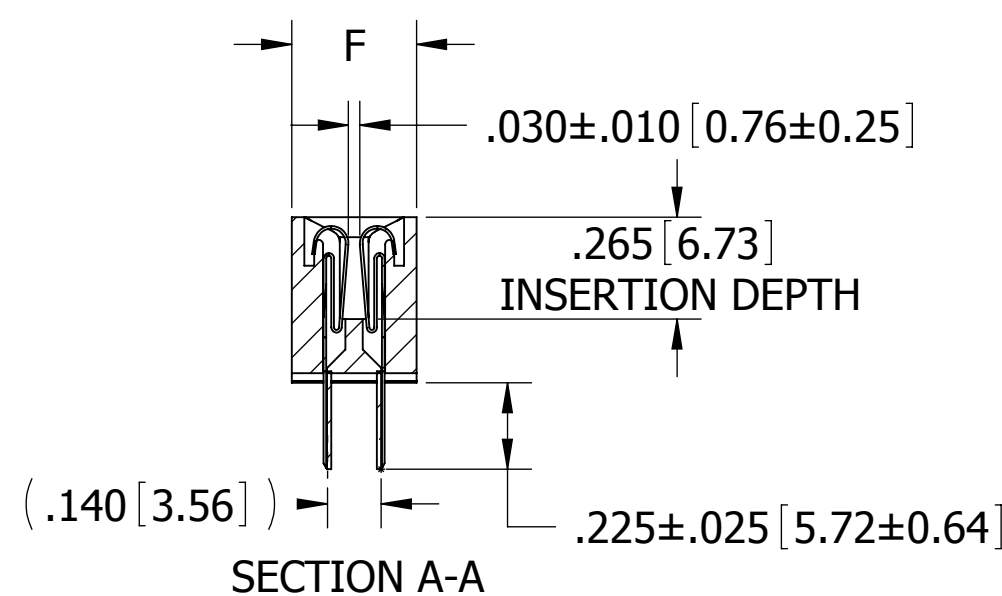


SIZE 02 THRU 30:
1 2 3 ... 23 24 25
A B C ... AA BB CC

SIZE 28 & 44
1 2 3 ... 23 24 25
A B C ... A B C

SIZE 36 & 43:
A B C ... A B C
1 2 3 ... 23 24 25

CONTACT ID



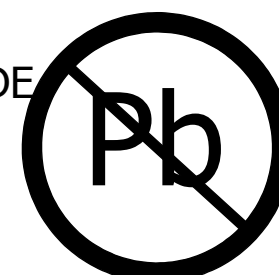
NOTES:

- INSULATOR MATERIAL: SEE PART NUMBER CODING
- CONTACT MATERIAL: SEE PART NUMBER CODING
- PLATING: SEE PART NUMBER CODING
- OPERATING TEMPERATURE: SEE PART NUMBER CODING
- PROCESSING TEMP: SEE PART NUMBER CODING
- UL FLAMMABILITY RATING: 94V-0
- DIELECTRIC WITHSTANDING VOLTAGE: 950 VAC MINIMUM AT SEA LEVEL
- CURRENT RATING: 3 AMP PER CONTACT
- CONTACT RESISTANCE: 30 MILLI OHMS MAX
- INSULATION RESISTANCE: 5000 MEGA OHMS
- DURABILITY: 500 CYCLES MIN
- CONNECTOR IDENTIFICATION: THE PART SHALL BE MARKED WITH A PART NUMBER AND LOT CODE
- BOARD THICKNESS ACCOMMODATED: $.062 \pm .008 [1.57 \pm 0.20]$
- INSERTION FORCE: 16 OZ MAX PER CONTACT PAIR WHEN USING A $.062 [1.57]$ TEST BLADE
INTERNAL INSPECTION TO BE PER SULLIN'S WORK INSTRUCTION WI7.3-01
- WITHDRAWAL FORCE: 1 OZ MIN PER CONTACT PAIR USING $.062 [1.57]$ PCB

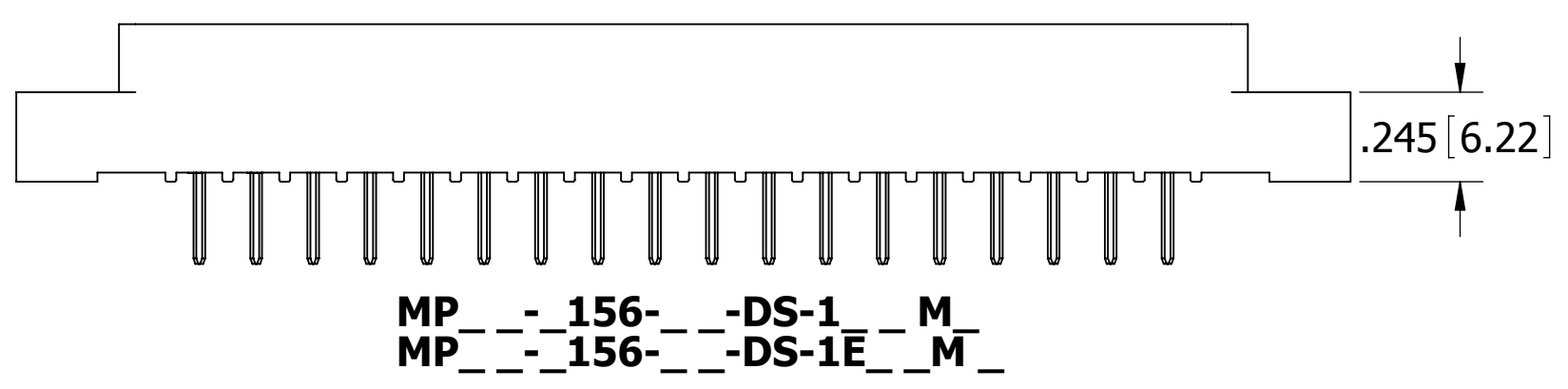
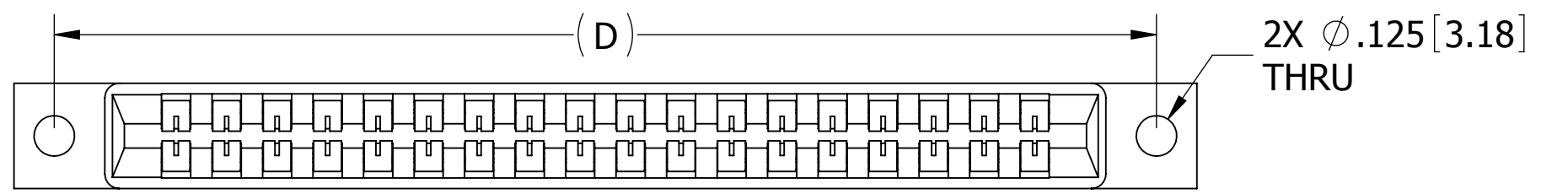
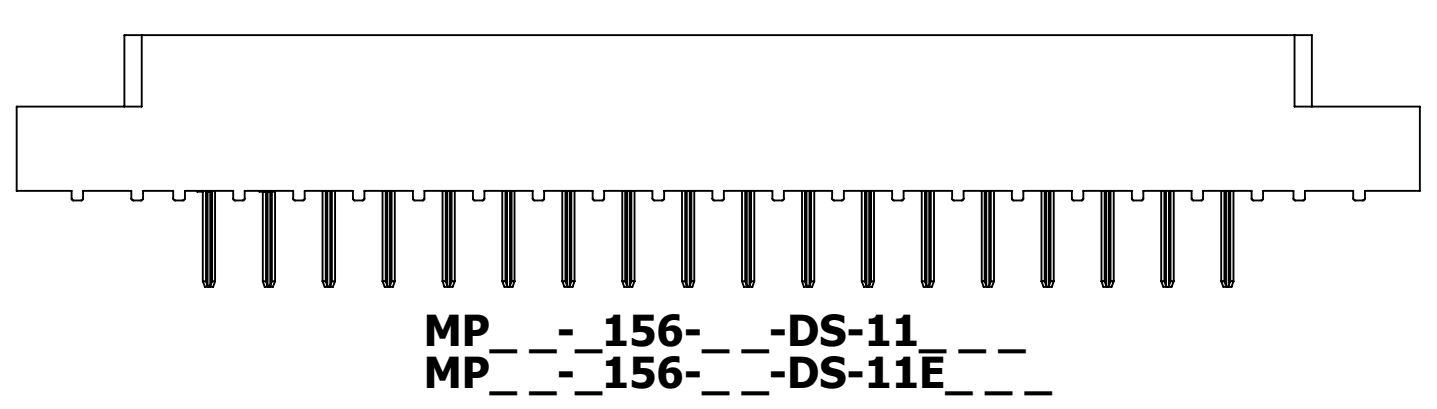
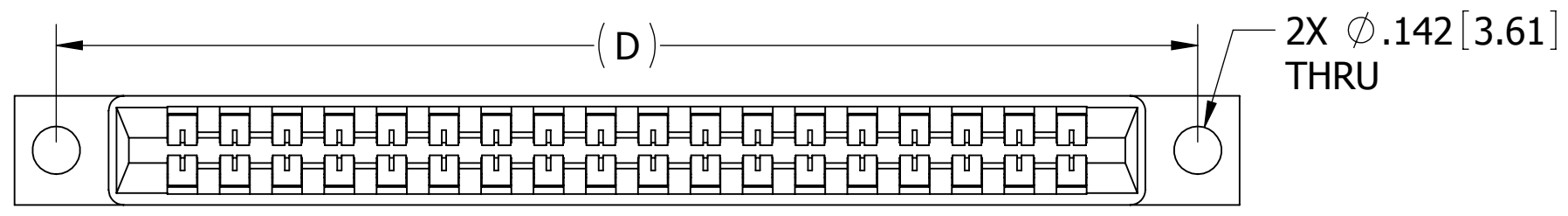
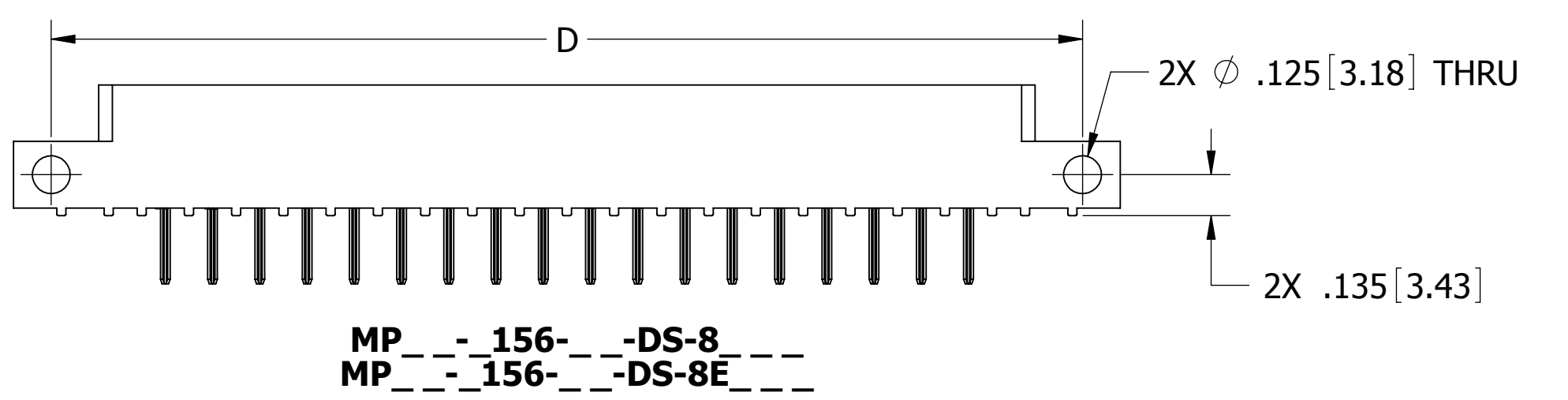
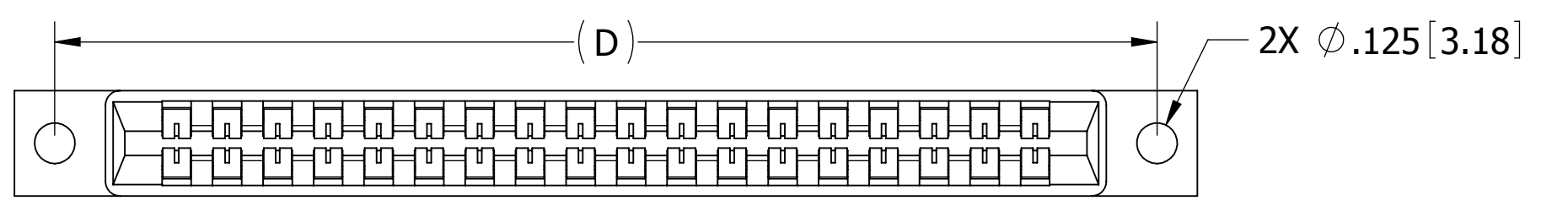
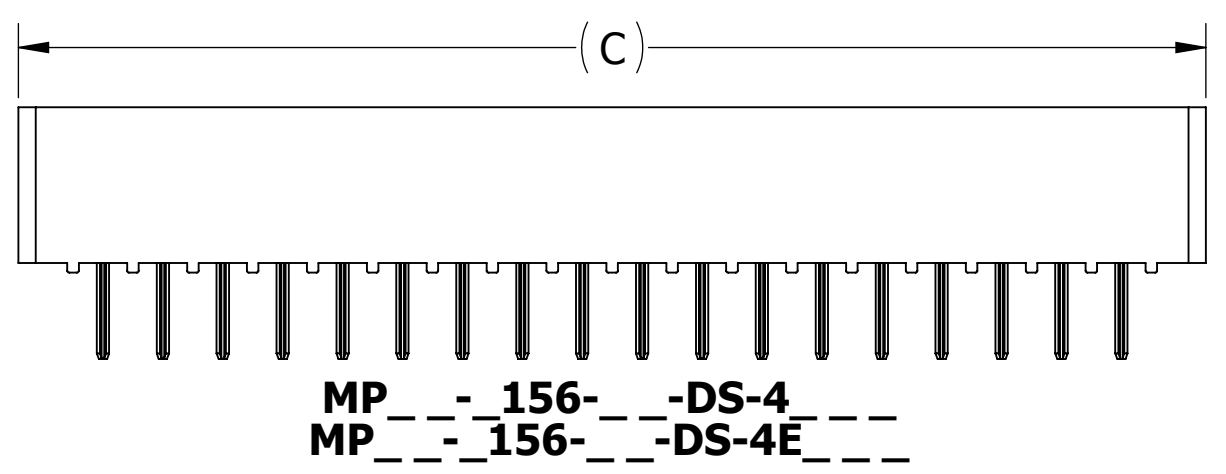
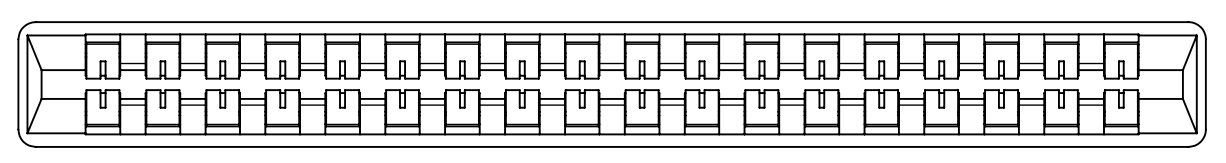
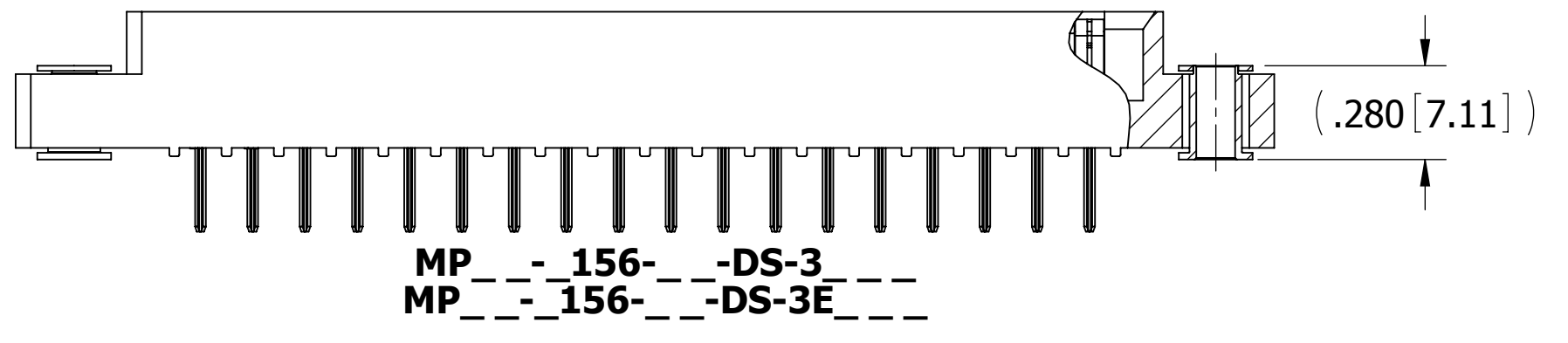
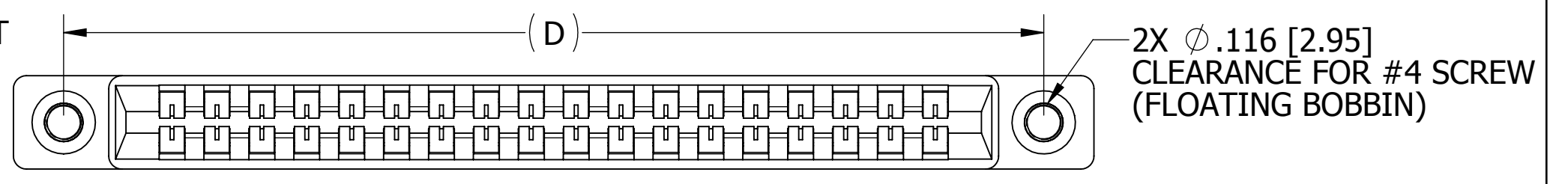
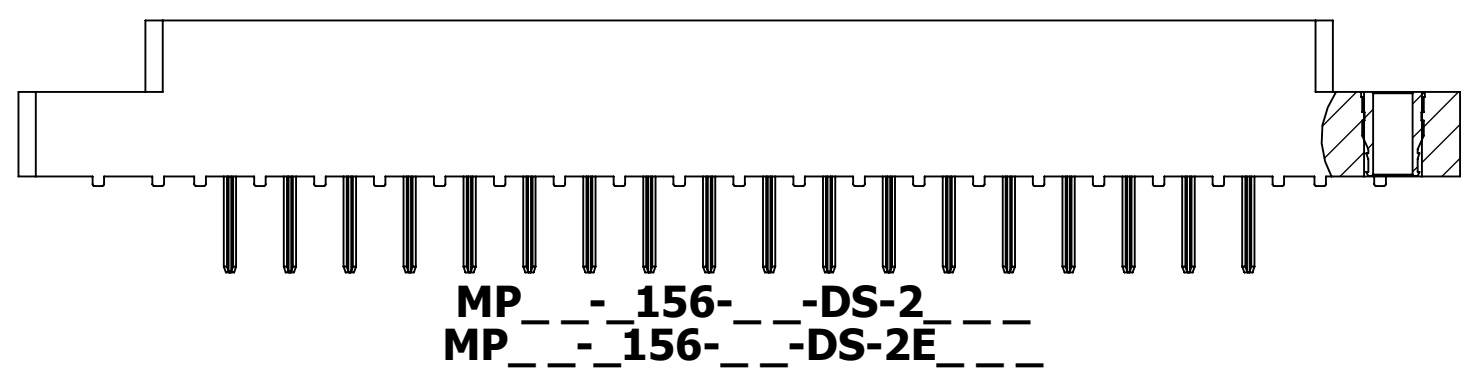
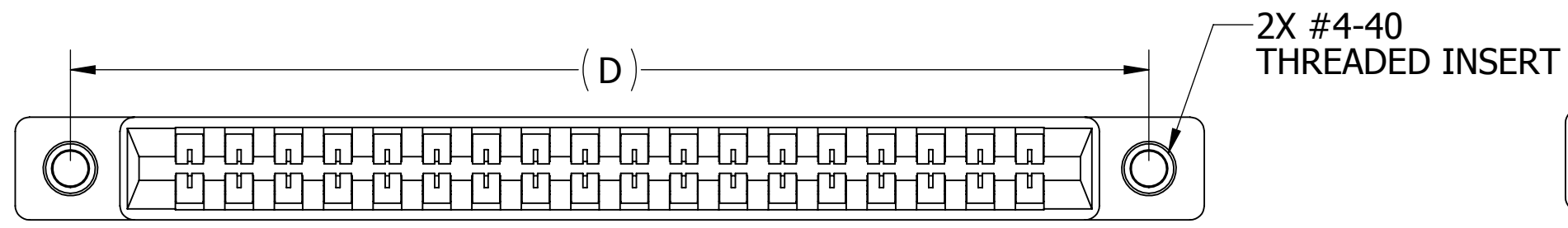
REF: __M__DRK_ (-OMIT, S38, S81, S328, S858, S1130, S1281, S1313)

CUSTOMER COPY

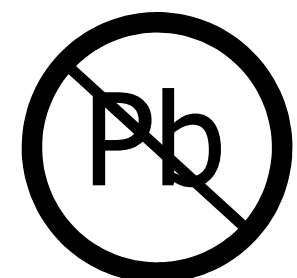
UNLESS OTHERWISE SPECIFIED: DIMENSIONS ARE IN INCHES [MM]	DRAWN	DATE	NAME	
		7/13/2011	JH	
TOLERANCES: ANGULAR: $\pm 30'$.XX= $\pm .02 [5]$.XXX= $\pm .005 [13]$.XXXX= $\pm .0005 [013]$	THE INFORMATION HEREIN CONTAINS PROPRIETARY INFORMATION OF SULLINS ELECTRONICS AND IS NOT TO BE REPRODUCED, USED OR DISCLOSED TO OTHERS FOR ANY PURPOSE EXCEPT AS SPECIFICALLY AUTHORIZED IN WRITING BY AN OFFICER OF SULLINS ELECTRONICS.			TITLE
	INTERPRET DIMENSIONS AND TOLERANCING PER: ASME Y14.5M-2009			EDGE CARD, .156 CC, LP
PART NUMBER				REV
MPSL- 156- __-DS- (E) _ _ _ _				B
SIZE	CAGE CODE	DWG. NO.		
C	54453	C11152		
SCALE: 2:1			SHEET 1 OF 4	



RoHS COMPLIANT



CUSTOMER COPY



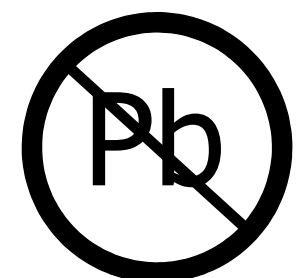
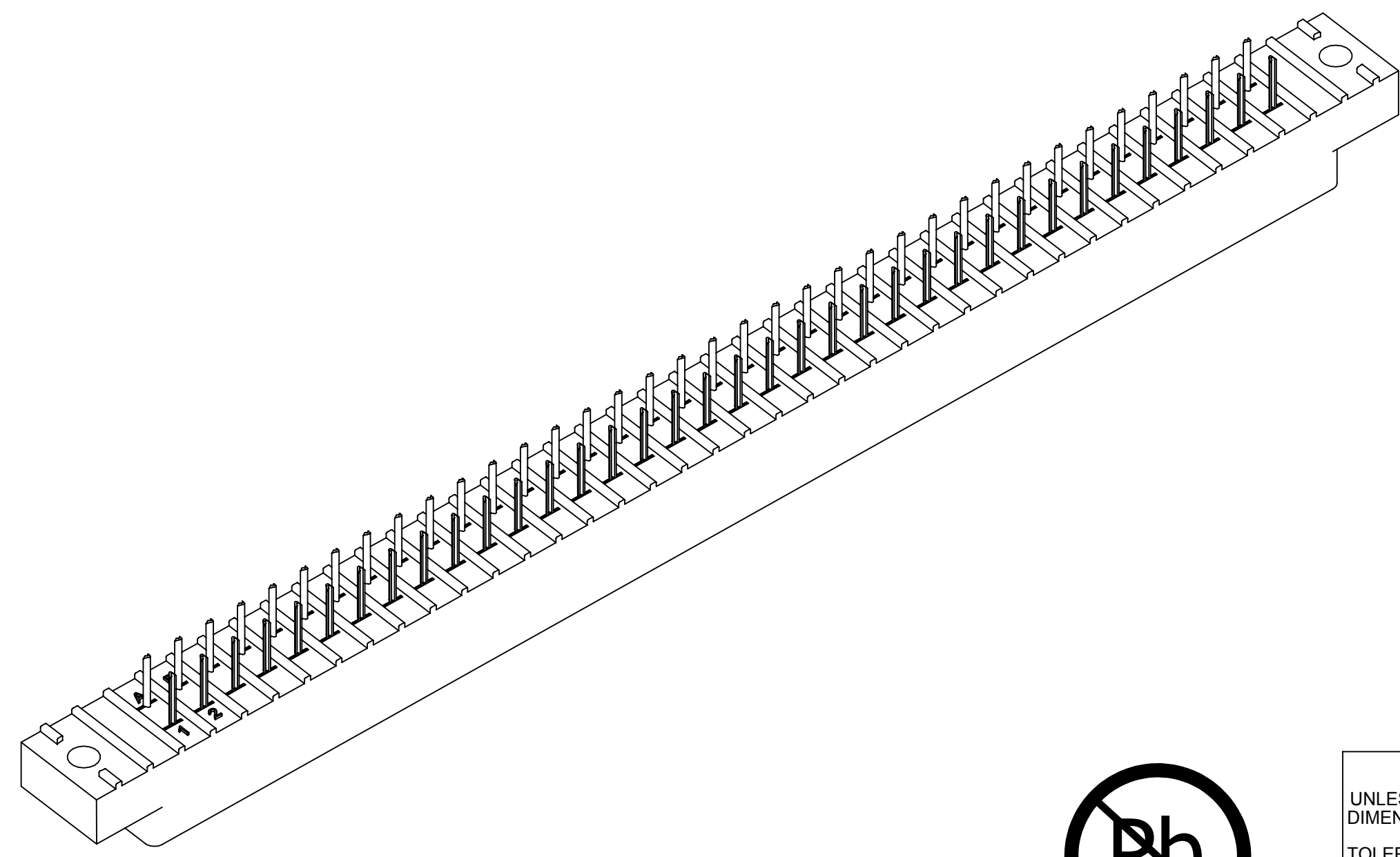
RoHS COMPLIANT

UNLESS OTHERWISE SPECIFIED: DIMENSIONS ARE IN INCHES [MM]	DRAWN	DATE	NAME	
		7/13/2011	JH	
TOLERANCES: ANGULAR: \pm 30' .XX = \pm .02 [.5] .XXX = \pm .005 [.13] .XXXX = \pm .0005 [.013]	THE INFORMATION HEREIN CONTAINS PROPRIETARY INFORMATION OF SULLINS ELECTRONICS AND IS NOT TO BE REPRODUCED, USED OR DISCLOSED TO OTHERS FOR ANY PURPOSE EXCEPT AS SPECIFICALLY AUTHORIZED IN WRITING BY AN OFFICER OF SULLINS ELECTRONICS.			TITLE
				EDGE CARD, .156 CC, LP
				PART NUMBER
INTERPRET DIMENSIONS AND TOLERANCING PER: ASME Y14.5M-2009	SCALE: 2:1			MPSL- 156- __ -DS-__ (E) __ __ C 54453 C11152 DWG. NO. SHEET 2 OF 4

Only applies for connectors with threaded inserts or floats

PART NUMBER	NO. OF POS.	A ± .008[0.20]		B ±.008[0.20]		C ±.015[0.38]		D ±.010[0.25]		E ±.020[0.51]		E ±.020[0.51]		F +.005[0.13]/-.015[0.38]	
		IN	MM	IN	MM	IN	MM	IN	MM	IN	MM	IN	MM	IN	MM
MP__-156-02-DS-4	2	0.156	3.96	0.476	12.09	0.596	15.14	"N" MOUNTING						0.325	8.26
MP__-156-03-DS-4	3	0.312	7.92	0.632	16.05	0.752	19.10								
MP__-156-06-DS-	6	0.780	19.81	1.100	27.94	1.220	30.99	1.533	38.94	1.782	45.26	1.882	47.80		
MP__-156-08-DS-	8	1.092	27.74	1.412	35.86	1.532	38.91	1.845	46.86	2.094	53.19	2.194	55.73		
MP__-156-10-DS-	10	1.404	35.66	1.724	43.79	1.844	46.84	2.157	54.79	2.406	61.11	2.506	63.65		
MP__-156-11-DS-	11	1.560	39.62	1.880	47.75	2.000	50.80	2.313	58.75	2.562	65.07	2.662	67.61		
MP__-156-12-DS-	12	1.716	43.59	2.036	51.71	2.156	54.76	2.469	62.71	2.718	69.04	2.818	71.58		
MP__-156-15-DS-	15	2.184	55.47	2.504	63.60	2.624	66.65	2.937	74.60	3.186	80.92	3.286	83.46		
MP__-156-18-DS-	18	2.652	67.36	2.972	75.49	3.092	78.54	3.405	86.49	3.654	92.81	3.754	95.35		
MP__-156-22-DS-	22	3.276	83.21	3.596	91.34	3.716	94.39	4.029	102.34	4.278	108.66	4.378	111.20		
MP__-156-24-DS-	24	3.588	91.14	3.908	99.26	4.028	102.31	4.341	110.26	4.590	116.59	4.690	119.13		
MP__-156-25-DS-	25	3.744	95.10	4.064	103.23	4.184	106.27	4.497	114.22	4.746	120.55	4.846	123.09		
MP__-156-28-DS-	28	4.212	106.98	4.532	115.11	4.652	118.16	4.965	126.11	5.214	132.44	5.314	134.98		
MP__-156-36-DS-*	36	5.460	138.68	5.780	146.81	5.900	149.86	6.213	157.81	6.462	164.13	6.562	166.67	0.438	11.13
MP__-156-43-DS-*	43	6.552	166.42	6.872	174.55	6.992	177.60	7.305	185.55	7.554	191.87	7.654	194.41	0.500	12.70
MP__-156-44-DS-	44	6.708	170.38	7.028	178.51	7.148	181.56	7.461	189.51	7.710	195.83	7.810	198.37		

* REVERSE CONTACT I.D. (SEE PAGE 1)



RoHS COMPLIANT

CUSTOMER COPY

UNLESS OTHERWISE SPECIFIED: DIMENSIONS ARE IN INCHES [MM]		DRAWN	DATE	NAME		
TOLERANCES: ANGULAR: ± 30' .XX=± .02 [.5] .XXX=± .005 [.13] .XXXX=± .0005 [.013]		7/13/2011	JH			
INTERPRET DIMENSIONS AND TOLERANCING PER: ASME Y14.5M-2009		<small>THE INFORMATION HEREIN CONTAINS PROPRIETARY INFORMATION OF SULLINS ELECTRONICS AND IS NOT TO BE REPRODUCED, USED OR DISCLOSED TO OTHERS FOR ANY PURPOSE EXCEPT AS SPECIFICALLY AUTHORIZED IN WRITING BY AN OFFICER OF SULLINS ELECTRONICS.</small>			TITLE EDGE CARD, .156 CC, LP	
					PART NUMBER MPSL-156--DS- (E) --	
		SIZE	CAGE CODE	DWG. NO.	REV	
		C	54453	C11152	B	
		SCALE: 2:1		SHEET 3 OF 4		

PART NUMBER CODING

MP - 156 - DS -

CONTACT MATERIAL

OMIT= PHOSPHOR BRONZE (SEE TABLE 2)
Y= BERYLLIUM COPPER (SEE TABLE 3)

PLATING MODIFICATION CODE (SEE TABLE 1)

MODIFICATION CODE

E = OBSOLETE (CAN BE OMITTED)**

MOUNTING STYLE

- 1= .125" DIA. CLEARANCE HOLES
- 2= #4-40 THREADED INSERT
- 3= FLOATING BOBBIN
- 4= NO MOUNTING EARS
- 8= .125" DIA. SIDE HOLES
- 11= .142" DIA. CLEARANCE HOLES
- 1 WITH MODIFICATION CODE 'M' = PAD ON BOTTOM OF MOUNTING EARS

NUMBER OF POSITIONS

INSULATOR MATERIAL

- 0= PBT, BLUE
- 2= PBT, GREEN
- 3= PBT, BLACK
- 1= PPS, BROWN
- 5= PPS, BLACK
- 6= PPS, GREEN
- 7= PPS, BROWN

PLATING (SEE TABLE 1)

TABLE 1 (PLATING):

ALL PLATINGS HAVE .000050" NICKEL UNDERPLATE

	CONTACT SURFACE	TERMINATION	PLATING MODIFICATION CODE
MP	.000010" GOLD OVERALL		OMIT
	.000030" GOLD	.000010" GOLD OVERALL	G
MPSL	.000010" GOLD	.000100" PURE TIN, MATTE	K
	.000030" GOLD	.000100" PURE TIN, MATTE	GK
MPL	.000100" PURE TIN, MATTE OVERALL		K

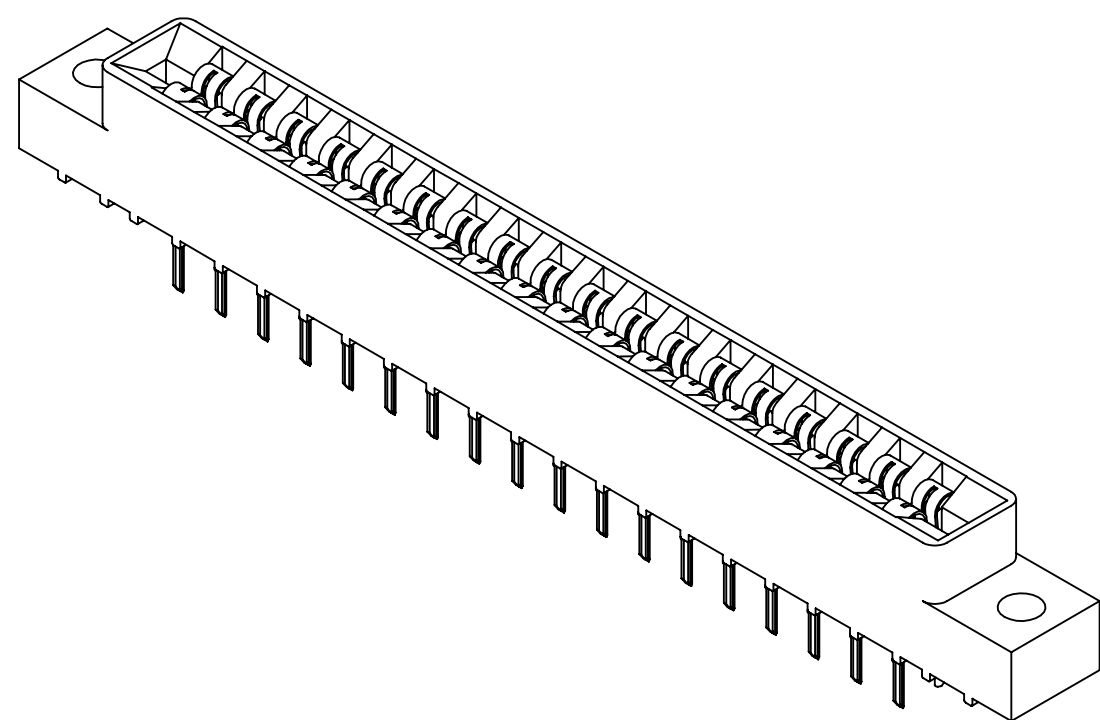
TABLE 2 (PHOSPHOR BRONZE CONTACTS):

INSULATOR MATERIAL CODE	OPERATING TEMPERATURE	PROCESSING TEMPERATURE
0, 2, 3	-65°C TO +125°C	260°C FOR 10 SEC MAX (230°C, 30 SEC)
1, 5, 6, 7	-65°C TO +125°C	260°C FOR 120 SEC MAX

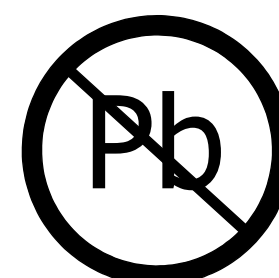
TABLE 3 (BERYLLIUM COPPER CONTACTS):

INSULATOR MATERIAL CODE	OPERATING TEMPERATURE	PROCESSING TEMPERATURE
0, 2, 3	-65°C TO +125°C	260°C FOR 10 SEC MAX (230°C, 30 SEC)
1, 5, 6, 7	-65°C TO +150°C	260°C FOR 120 SEC MAX

** OPTIONAL "E" CODE MEANS .020" LONGER CARD SLOT, NOW STANDARD, SEE DIMENSION 'B' ON PAGE 3.



CUSTOMER COPY



RoHS COMPLIANT

UNLESS OTHERWISE SPECIFIED: DIMENSIONS ARE IN INCHES [MM]	DRAWN	DATE	NAME	
		7/13/2011	JH	
TOLERANCES: ANGULAR: ± 30' .XX=± .02 [.5] .XXX=± .005 [.13] .XXXX=± .0005 [.013]	THE INFORMATION HEREIN CONTAINS PROPRIETARY INFORMATION OF SULLINS ELECTRONICS AND IS NOT TO BE REPRODUCED, USED OR DISCLOSED TO OTHERS FOR ANY PURPOSE EXCEPT AS SPECIFICALLY AUTHORIZED IN WRITING BY AN OFFICER OF SULLINS ELECTRONICS.			TITLE
	INTERPRET DIMENSIONS AND TOLERANCING PER: ASME Y14.5M-2009			EDGE CARD, .156 CC, LP
PART NUMBER				REV
MPSL- 156- __ -DS- (E) _ _ _				B
SIZE	CAGE CODE	DWG. NO.		
C	54453	C11152		
SCALE: 2:1			SHEET 4 OF 4	