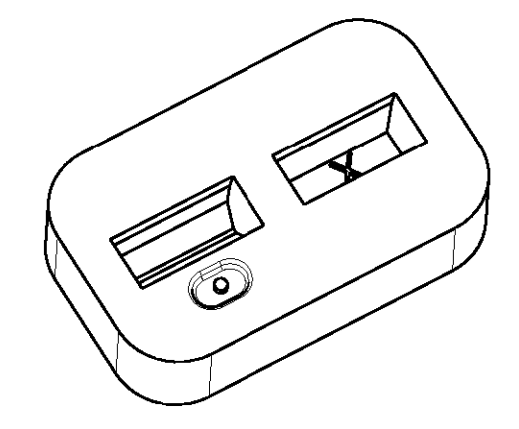
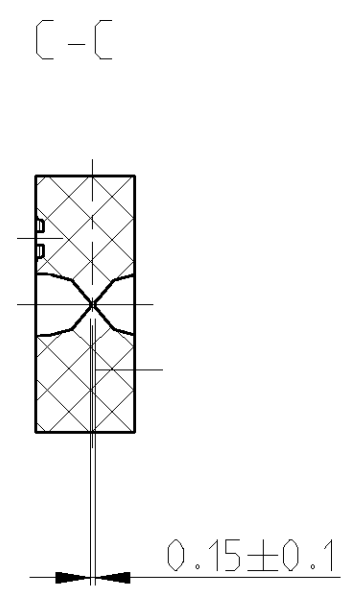
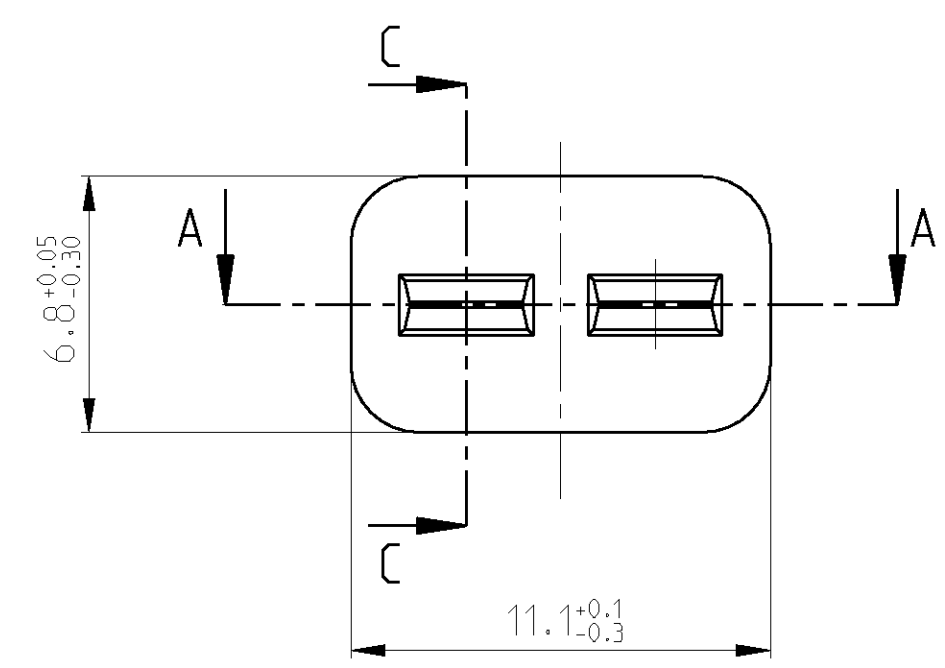
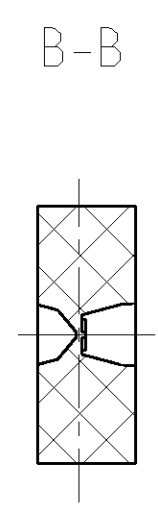
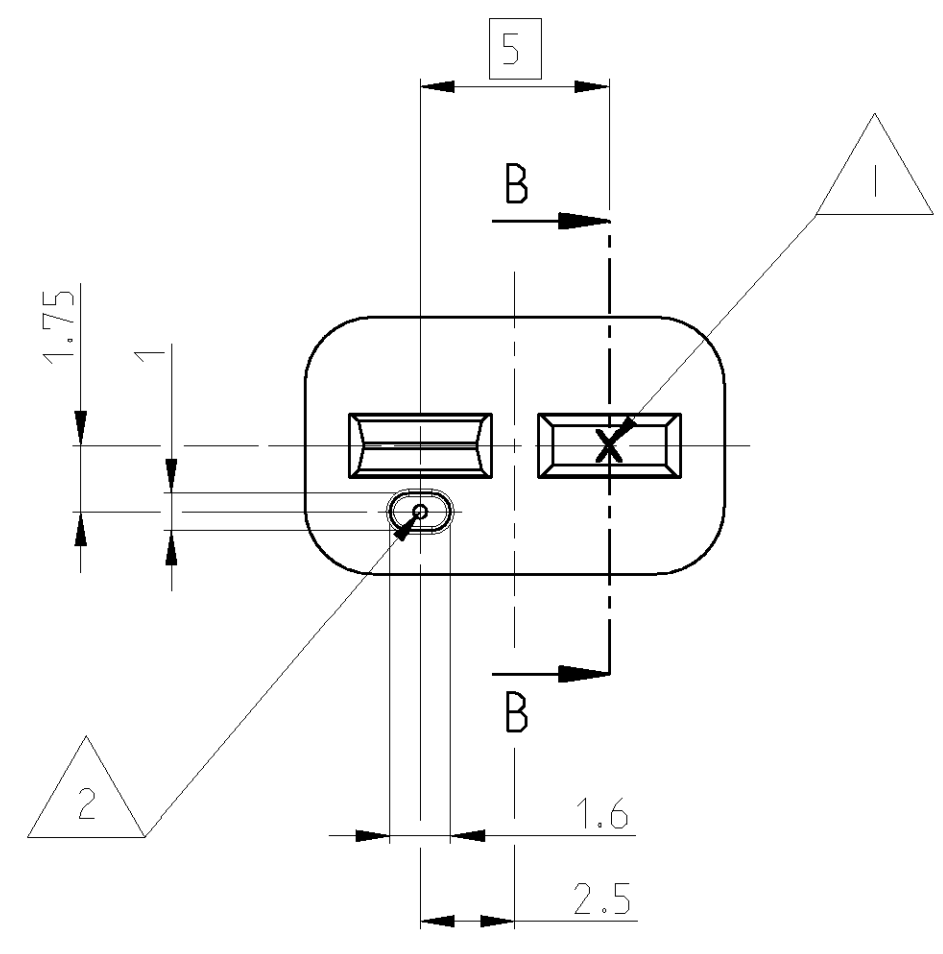
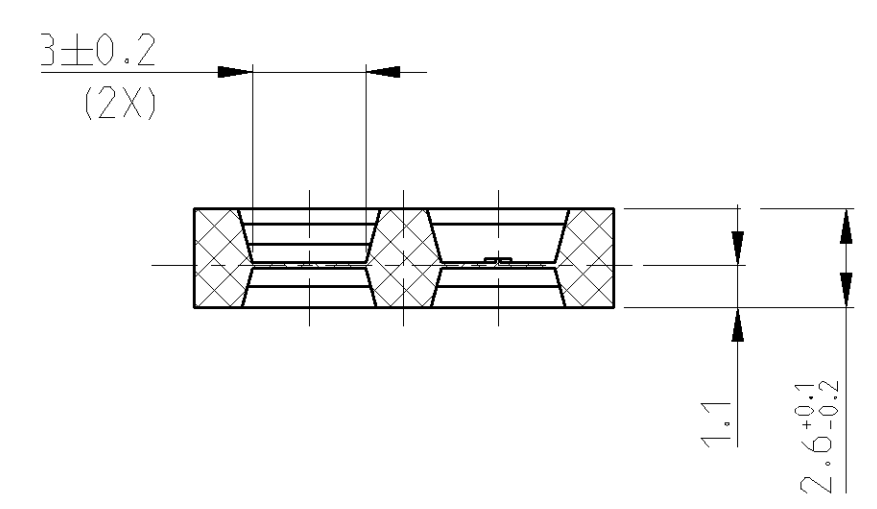


THIS DRAWING IS UNPUBLISHED. RELEASED FOR PUBLICATION 2006  
 © COPYRIGHT 2006 BY TYCO ELECTRONICS CORPORATION. ALL RIGHTS RESERVED.

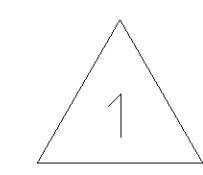
LOC	DIST	REVISIONS			
P	LTR	DESCRIPTION	DATE	DWN	APVD
D		SEE E-06-017312	04JUL2006	LN	TK
D1		SEE E-06-022754	25SEP2006	LN	VB



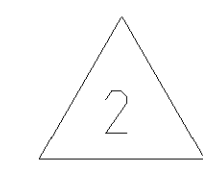
SECTION A-A  
Schnitt



NOTES  
Bemerkungen



CAVITY MARKING RAISED, OPTIONAL  
IN ONE OF THE WINDOWS  
Nestmarkierung erhaben, wahlweise  
in einem der Fenster



GATE AREA SUNK  
GATEMARK MUST NOT GET THROUGH OUTER GEOMETRY  
Angussbereich vertieft  
Anguss darf nicht aus der aeusseren  
Geometrie ueberstehen

963209-1	D	SEALING	NATURE	0.18	1
PART NO	REV	DESCRIPTION	COLOUR	WEIGHT [g]	ITEM

<small>THIS DRAWING IS A CONTROLLED DOCUMENT FOR TYCO ELECTRONICS CORPORATION IT IS SUBJECT TO CHANGE AND THE CONTROLLING ENGINEERING ORGANIZATION SHOULD BE CONTACTED FOR THE LATEST REVISION.</small>		DWN L. Nguyen 04 JUL 2006 CHK T. Kilian 18 JUL 2006 APVD D. Duenkel 18 JUL 2006	<b>tyco</b> <b>Electronics</b> tyco Electronics AMP GmbH 64625 Bensheim (Germany)
DIMENSIONS: mm 	TOLERANCES UNLESS OTHERWISE SPECIFIED: 0 PLC ±0.3 1 PLC ±0.3 2 PLC ±0.3 3 PLC ± 4 PLC ± ANGLES ±° FINISH	PRODUCT SPEC 108-18102 APPLICATION SPEC 114-18175 WEIGHT - CUSTOMER DRAWING	NAME SEALING FOR 2POS. JPT HOUSING Dichtung fuer 2pol. Gehaeuse SIZE A2 CAGE CODE 00779 DRAWING NO C=963209 RESTRICTED TO - SCALE 5:1 SHEET 1 OF 1 REV 01