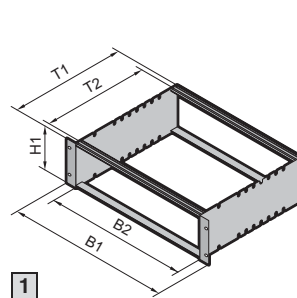
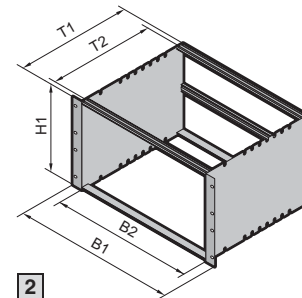


Ripac ECO 3 U, 6 U, sheet steel



1



2

B = Width
T = Depth

Material/surface finish:

Side panels:
1.5 mm sheet steel, zinc-plated
Flanges/horizontal rails:
Extruded aluminum section,
clear-chromated

Supply includes:

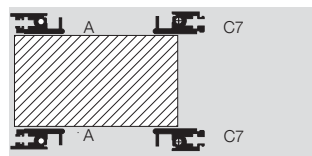
Side panels, flanges, horizontal
rails, threaded inserts, assembly screws.

Tests:

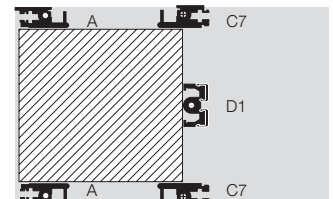
Shock and vibration tested to:
IEC 600-68-2-6 test Fc
IEC 600-68-2-27 test Ea

Standards:

Ripac subracks are based on
the system dimensions of
DIN 41 494 part 5 and
IEC 60 297-3.



1 For backplane



2 For backplane

					Order No.		Page
					1	2	
U (H1)					3	6	
B1 mm	B2 HP	Side panel (T1) mm	T2 mm	Max. PCB depth mm	For backplane	For backplane	
482.6 (19")	84	175	150	160	3688.114	3688.116	
		235	210	220	3688.115	3688.117	
Accessories							
Covers							125
Horizontal rails							100
Guide rails							119