

ATLANTIC VERSION TERMINATOR INTERFACE ADAPTER	PART NUMBER	REVISION	DESCRIPTION	FEED TYPE	CONVERT TO	PART NUMBERS REQUIRED					
	2151448-1	B	FINE CRIMP HEIGHT ADJUST	MECHANICAL	PNEUMATIC FEED	2119950-1	1338685-1	5-18022-5	2119641-1	2119799-1	2063440-1
	2151448-2	B	FINE CRIMP HEIGHT ADJUST	PNEUMATIC	SERVO LATCH PLATE	2119951-1	-	8-2151448-5	1901094-3	-	2168400-6 (QUANTITY 2)
					SMART APPLICATOR	2161326-1	-	8-2151448-4	-	-	
					MECHANICAL FEED	2119949-1	1338685-1	5-18022-5	2119653-1	-	-
	2151448-5	B	FINE CRIMP HEIGHT ADJUST	SERVO LATCH PLATE	SERVO LATCH PLATE	2119951-1	-	8-2151448-5	1901094-3	-	2168400-6 (QUANTITY 2)
					SMART APPLICATOR	2161326-1	-	8-2151448-4	-	-	
	2151448-6	B	NON-CRIMP HEIGHT ADJUST	SERVO LATCH PLATE	MECHANICAL FEED	2119949-1	1338685-1	5-18022-5	2119653-1	-	-
2151448-7	B	FINE CRIMP HEIGHT ADJUST	NONE	PNEUMATIC FEED	2119950-1	1338685-1	5-18022-5	2119641-1	2119799-1	2063440-1	
7-2151448-7	A	CRIMP TOOLING KIT	-	-	-	-	-	-	-	-	

APPLICATOR DATA		
CRIMP WIRE	SIZE	TYPE
WIRE	2.50 mm [.098]	F
INSUL	4.30 mm [.169]	O

APPLICATOR INSTRUCTIONS 408-10389

TERMINAL DATA: MOLEX TERMINAL MOLEX CRIMP SPECIFICATION			
TERMINAL NAME: TERMINAL, FEMALE RECEPTACLE			
WIRE STRIP LENGTH	INSULATION DIAMETER RANGE		
4.20-5.00 mm [.165-.197 IN]	Ø2.87-3.53 mm [.113-.139 IN]		
TERMINAL APPLICATION SPECIFICATION	63900-8200 Rev B		
TERMINALS APPLIED			
TE TERMINAL	MOLEX TERMINAL	TE TERMINAL	MOLEX TERMINAL
2025308-1	19420-0001	1949405-2	19420-0003

TERMINAL DATA: MOLEX TERMINAL MOLEX CRIMP SPECIFICATION			
TERMINAL NAME: MALE PIN TERMINAL			
WIRE STRIP LENGTH	INSULATION DIAMETER RANGE		
4.20-5.00 mm [.165-.197 IN]	Ø2.87-3.53 mm [.113-.139 IN]		
TERMINAL APPLICATION SPECIFICATION	63900-8200 Rev B		
TERMINALS APPLIED			
TE TERMINAL	MOLEX TERMINAL	TE TERMINAL	MOLEX TERMINAL
2113009-1	19417-0011	2113009-3	19417-0027
2113009-2	19417-0025	2113009-4	19417-0029

WIRE SIZE	CRIMP HEIGHT mm [INCH]	CRIMP HEIGHT REFERENCE SETTING
14 AWG OR 2.00mm2	1.50+/-0.05 [.059+/- .002]	6.7
16 AWG OR 1.27mm2	1.45+/-0.05 [.057+/- .002]	7.1

WIRE SIZE	CRIMP HEIGHT mm [INCH]	CRIMP HEIGHT REFERENCE SETTING
14 AWG OR 2.00mm2	1.70+/-0.05 [.067+/- .002]	5.1
16 AWG OR 1.27mm2	1.65+/-0.05 [.065+/- .002]	5.2

- 1. RECOMMENDED SPARE PARTS
- 2. GREASE BEARING SURFACES LIGHTLY
- 3. LUBRICATE DAILY PER THE APPLICATOR INSTRUCTION SHEET SUPPLIED WITH THE APPLICATOR.
- 4. APPLICATOR SPECIFIC DATA TO BE ENTERED INTO BLANK MEMORY CHIP AT ASSEMBLY. SEE BELOW FOR PART NUMBER:
 MECHANICAL FEED WITH "SMART APPLICATOR" CONVERSION: 8-2151448-4
 PNEUMATIC FEED WITH "SMART APPLICATOR" CONVERSION: 8-2151448-4
 SERVO FEED WITH "FINE CRIMP HEIGHT ADJUST": 8-2151448-5
 SERVO FEED WITH "NON-CRIMP HEIGHT ADJUST": 8-2151448-6
- 5. ADJUSTMENT OF THE STRIPPER MAY BE REQUIRED WHEN MOVING THE APPLICATOR BETWEEN BENCH AND LEADMAKER APPLICATIONS.
- 6. APPLY PART NUMBER 1-23419-5 LOCTITE TO THREADS OF ITEM 62. APPLY PART NUMBER 2-23419-6 LOCTITE TO THREADS OF ITEM 242. FOR -6 ONLY APPLY PART NUMBER 1-23419-5 LOCTITE TO THREADS OF ITEM 37.
- 7. GREASE THREADS, GROOVE AND O-RING ON ITEMS 35 & 252.
- 8. MAGNET, ITEM 166 MUST BE ORIENTED CORRECTLY IN ORDER TO PROPERLY ACTUATE THE COUNTER.
- 9. CRIMP HEIGHT REFERENCE SETTING WAS THE SETTING USED WHEN THE APPLICATOR WAS QUALIFIED AT THE FACTORY. ADJUSTMENT MAY BE NECESSARY WHEN RUNNING APPLICATOR IN THE FIELD.
- 10. SPARE FEED CAM STORAGE LOCATION REFER TO INSTRUCTION SHEET FOR ADDITIONAL INFORMATION.
- 11. TO CONVERT THE APPLICATOR TO A NON-CARRIER CUTTING STYLE, REMOVE ITEM 13 AND ATTACH TO THE LOCATION ON THE BACK SIDE OF THE HOUSING. REFER TO INSTRUCTION SHEET FOR ADDITIONAL INFORMATION.
- 12. WHEN ASSEMBLING A NON CRIMP HEIGHT ADJUST APPLICATOR (-6) USE SHIMS FROM ITEM 260 TO ACHIEVE A NOMINAL SHIM HEIGHT OF 4.30.
- 13. TERMINAL LUBRICANT IS RECOMMENDED.

***WARNING**
 ON INSTALLATION, SET WIRE DISC, ITEM 40 TO LARGEST WIRE SIZE SETTING. USE OF SETTINGS BELOW MINIMUM REQUIRED CRIMP HEIGHT SETTING WILL CAUSE DAMAGE TO CRIMP TOOLING.

ITEM NO	DESCRIPTION	ITEM NO
260	APPLICATOR SHIM PACK	260
252	O-RING, .676 ID, .070 DIA. MAT.	252
-77	-7 -6 -5 -2 -1 PART NO	DESCRIPTION

ATLANTIC VERSION
 Shown on sheets 1 of 4 & 2 of 4
 (Pacific version shown on sheets 3 of 4 & 4 of 4)

SET UP GAUGE	LOC	DIST	REVISIONS			
2119599-1	A	66	REV	DATE	BY	CHK
			A	RELEASED	30JUL2014	LG
			B	ECR-17-004075	22MAR2017	TB

REV	DATE	BY	CHK	DESCRIPTION	ITEM NO	
-	-	-	-	1 - 2119640-1	PUSH ROD, AIR FEED	250
-	-	-	-	1 - 1803259-1	BUSHING, FLANGED	249
-	-	-	-	1 - 2119641-1	FEED CAM, AIR FEED	248
-	1	-	1	1 - 2119798-1	DETENT PIN	247
-	1	-	1	1 - 22279-3	SPRING, COMPRESSION	246
-	-	1	-	1 - 2119758-1	RAM, AMP STYLE, SIDE FEED, NON-ADJ.	245
-	1	1	1	1 - 2119082-4	CAM, SNAIL, INSULATION ADJUSTMENT	244
-	1	1	1	1 - 2079764-1	WASHER, WAVE SPRING, CREST-TO-CREST	243
-	1	1	1	1 - 2119083-1	RETAINER, INSULATION DIAL	242
-	1	1	1	1 - 7-18023-7	SCR, SKT HD CAP M3 X 4.0	241
-	-	2	2	1 - 2168400-6	SHCS, LOW HEAD, RoHS, M5 X 16	240
-	-	-	-	1 - 2119580-1	MECHANICAL FEED ASSEMBLY	239
-	-	-	-	1 - 2063440-1	AIR FEED MODULE	238
-	-	1	-	1 - 2119740-2	TAG, IDENTIFICATION	213
-	-	1	1	1 - 1901094-3	SPACER, FEEDER	198
-	-	-	2	1 - 21045-3	RING, RETAIN, EXTERN, 3/16 CRESCENT	172
-	1	1	1	1 - 994969-1	MAGNET, RARE EARTH HIGH ENERGY	166
-	REF	REF	REF	REF - 994970-2	COUNTER, MAGNETIC	164
-	-	-	-	1 - 240638-1	SPRING, FEED FINGER	163
-	-	-	-	1 - 3-23627-7	PIN, RETAIN, GRVD, 3/16 X .854	137
-	-	-	-	1 - 2119799-1	HOLDER, FEED FINGER, AF	136
-	-	REF	REF	-	SEE NOTE 4 MEMORY CHIP, PROGRAMMED	135
-	-	1	1	1 - 1633743-1	SERVO FEED LATCH ASM	133
-	-	REF	REF	-	2119944-1 FEED FINGER ASSEMBLY, SF	117
-	1	1	1	1 - 2119955-1	ASSY, LUBRICATOR, SIDE FEED	113
-	1	1	1	1 - 455888-5	SPACER, CRIMPER	82
-	1	1	1	1 - 2119956-1	DOCUMENTATION PACKAGE	71
-	1	-	1	1 - 2119740-1	TAG, IDENTIFICATION	67
-	2	2	2	2 - 2168078-1	SCREW, DRIVE, RH, RoHS, 2 x .188	66
-	1	-	1	1 - 2119793-1	LIMITER, ADJUSTMENT BOLT	63
-	3	-	3	3 - 992763-5	SCR, SET, SOC, CONE POINT, M3 x 4.0	62
-	1	1	1	1 - 2079383-4	SCR, BHSC, RoHS (M4 X 8)	60
-	-	-	-	1 - 5-18022-5	SCR, HEX HD CAP, M4 X 6.0	59
-	-	-	-	1 - 1338685-1	PAWL, FEED	56
-	4	4	4	4 - 2168400-1	SHCS, LOW HEAD, RoHS, M4 X 12	54
-	2	2	2	2 - 2168083-8	SCR, SKT HD CAP, RoHS, M4 X 16	53
-	1	1	1	1 - 5018030-1	NUT, HEX, REG, RoHS, M3	52
-	1	1	1	1 - 811242-5	BUMPER, HOLD DOWN	51
-	1	1	1	1 - 690753-2	SPACER, TONKER	50
-	-	-	-	1 - 18023-9	SCR, SKT HD CAP M4 X 6.0	49
-	-	-	-	1 - 2119652-1	FEED CAM, PRE FEED	48
-	-	-	-	1 - 2119653-1	FEED CAM, POST FEED	47
-	1	1	1	1 - 2119656-9	APPLICATOR BASIC ASSEMBLY, SF	46
-	1	-	1	1 - 2119370-1	RAM, AMP STYLE, SIDE FEED	44
-	1	1	1	1 - 2079383-7	SCR, BHSC, RoHS (M8 X 25)	41
-	1	-	1	1 - 2119645-1	DISC, NUMBERED FA WIRE ADJUSTMENT	40
-	1	-	1	1 - 2119957-1	APPLICATOR SHIM PACK	39
-	1	1	1	1 - 2119644-2	RAM WASHER, PRECISION	38
-	1	1	1	1 - 2119085-1	FA HEAD, ATLANTIC STYLE	37
-	1	-	1	1 - 2119092-1	BOLT, ADJUSTMENT	35
-	1	1	1	1 - 5-1752356-1	SUPPORT, TERMINAL	34
-	2	2	2	2 - 2079383-5	SCR, BHSC, RoHS (M4 X 20)	33
-	1	1	1	1 - 2161328-1	HEX HEAD, FLANGED, M5 x 8mm LONG	32
-	1	1	1	1 - 1-1320908-0	SPACER, STRIP GUIDE	30
-	1	1	1	1 - 2119959-1	ASSEMBLY, STRIP GUIDE	29
-	1	1	1	1 - 455888-3	SPACER, CRIMPER	28
-	1	1	1	1 - 1320928-6	STRIP GUIDE	24
-	1	1	1	1 - 2168083-2	SCR, SKT HD CAP, RoHS, M4 X 8.0	21
-	2	2	2	2 - 1-18028-2	WASHER, FLAT, REG M4	20
-	1	1	1	1 - 2119533-1	STRIPPER, SIDE FEED	19
-	1	1	1	1 - 2119806-1	INSERT, SHEAR	13
-	1	1	1	1 - 3-22280-3	SPRING, COMPRESSION	12
-	1	1	1	1 - 1-356885-4	STOP, SHEAR	11
-	1	1	1	1 - 2119805-1	SHEAR HOLDER, FRONT	10
-	1	1	1	1 - 462006-6	FLOATING SHEAR, FRONT	9
-	1	1	1	1 - 1-1633620-6	ANVIL, COMBINATION	8
-	1	1	1	1 - 2-240641-9	SPACER	7
-	-	-	-	-	-	6
-	1	1	1	1 - 2119757-0	DEPRESSOR, SHEAR	5
-	1	1	1	1 - 238011-2	BLOCK, CRIMPER SPACER	4
-	1	1	1	1 - 3-1633965-2	CRIMPER, INSULATION O PREMIUM	3
-	1	1	1	1 - 455888-5	SPACER, CRIMPER	2
-	1	1	1	1 - 1633588-1	CRIMPER, WIRE	1

DIMENSIONS:		TOLERANCES UNLESS OTHERWISE SPECIFIED:		DRAWING NO	
mm	0 PLC	±	31MAY2012	31MAY2012	
	1 PLC	±	31MAY2012	31MAY2012	
	2 PLC	±			
	3 PLC	±			
	4 PLC	±			
	ANGLES	±			
	FINISH	±			

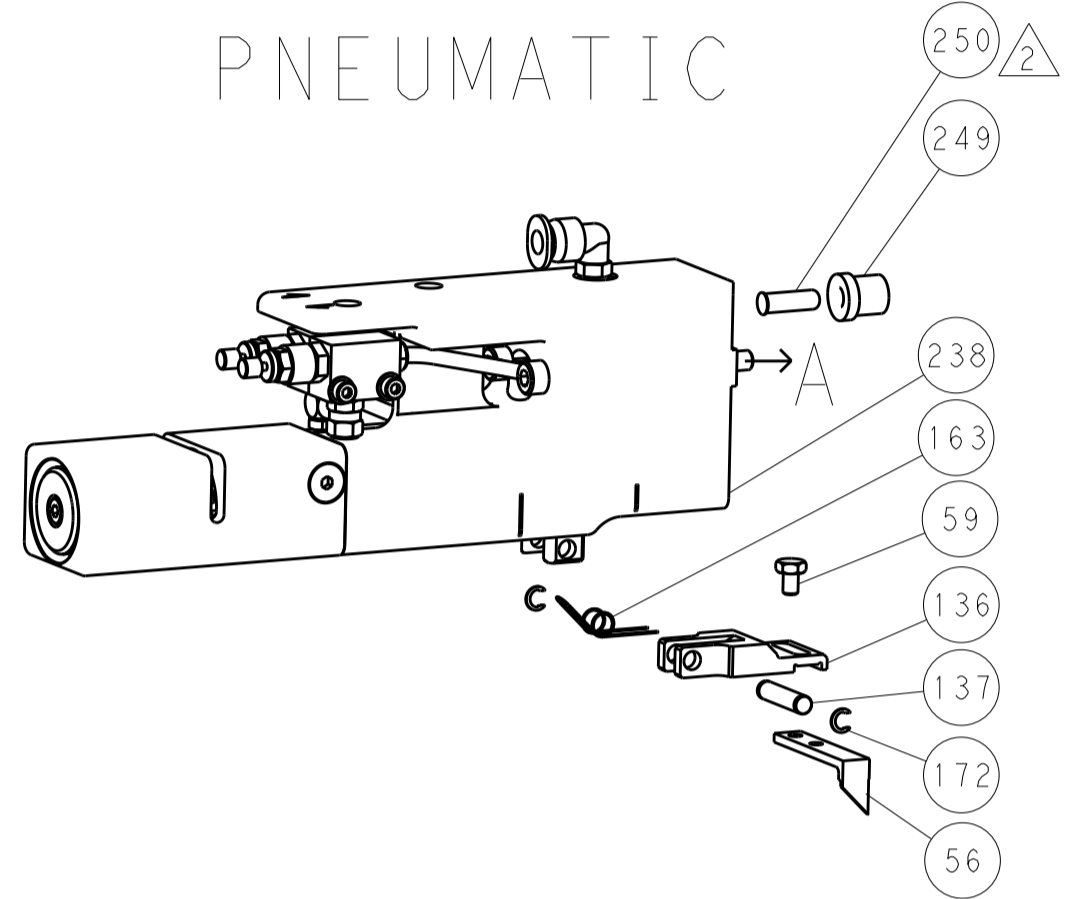
APPROVED	DATE	NAME	TE Connectivity
S. XI	31MAY2012		Harrisburg, PA 17105-3608
PRODUCT SPEC		Ocean Side Feed Applicator	
APPLICATION SPEC		SIZE	CAGE CODE DRAWING NO
		A1	00779 ©=2151448
MATERIAL		WEIGHT	RESTRICTED TO
			Customer Accessible Production Drawing
		SCALE	SHEET 1 OF 4
		1:2	REV B

LOC		DIST		REVISIONS			
A	66	P	LTM	DESCRIPTION	DATE	DWN	APVD
		-	-	SEE SHEET 1	-	-	-

FEED TYPE MECHANICAL



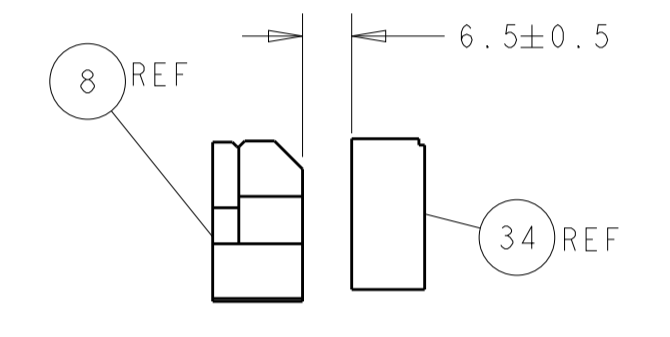
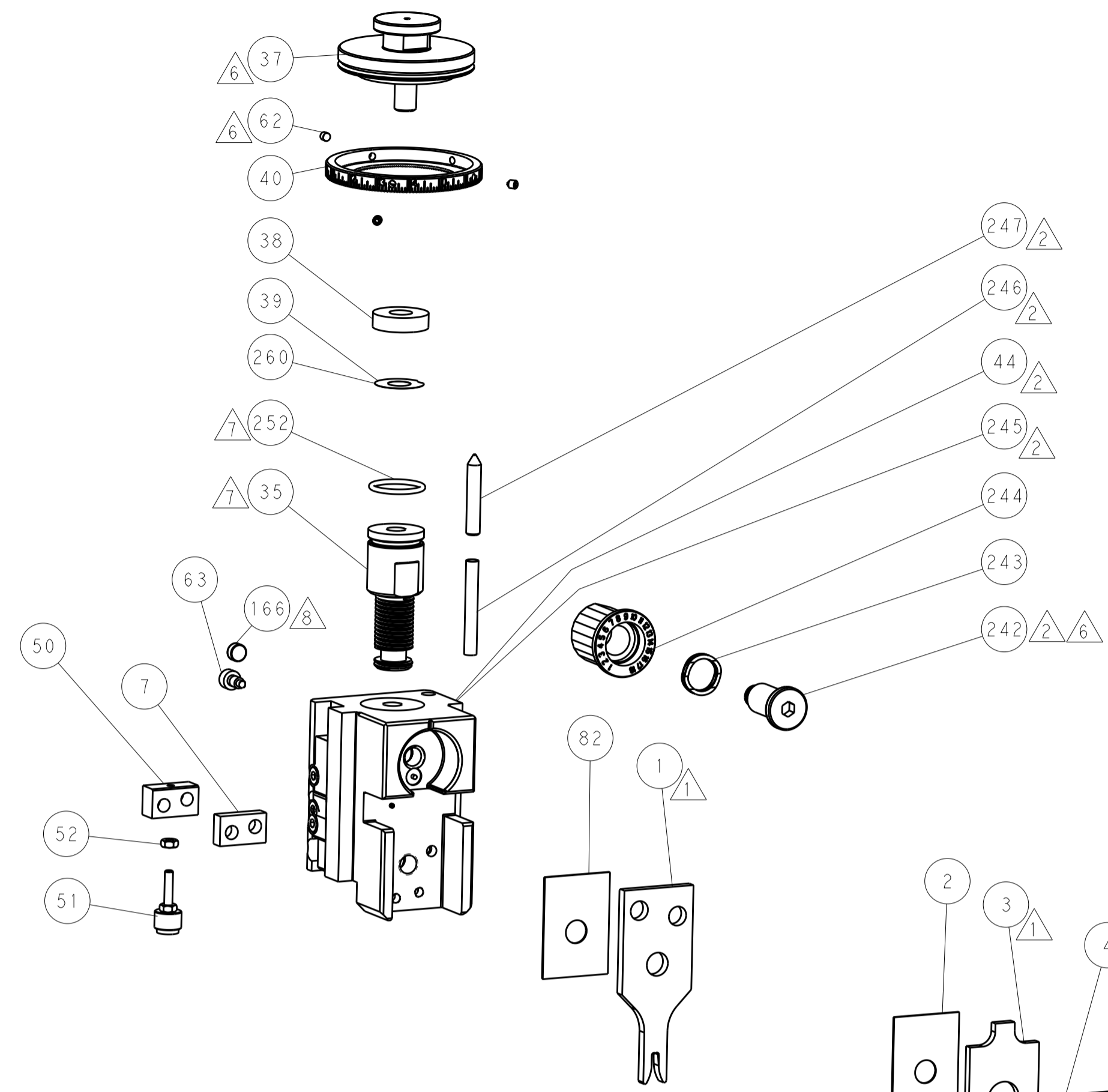
PNEUMATIC



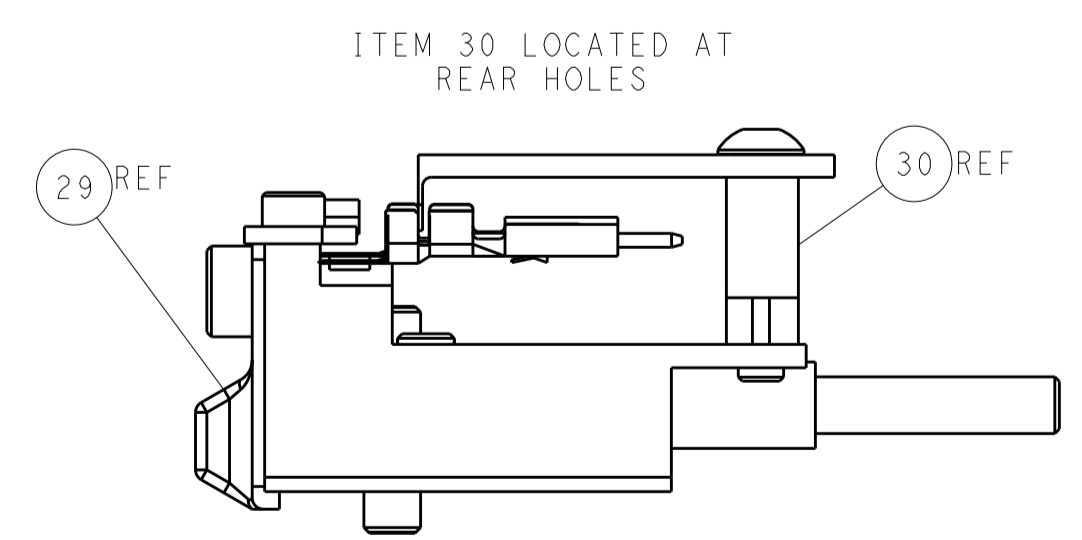
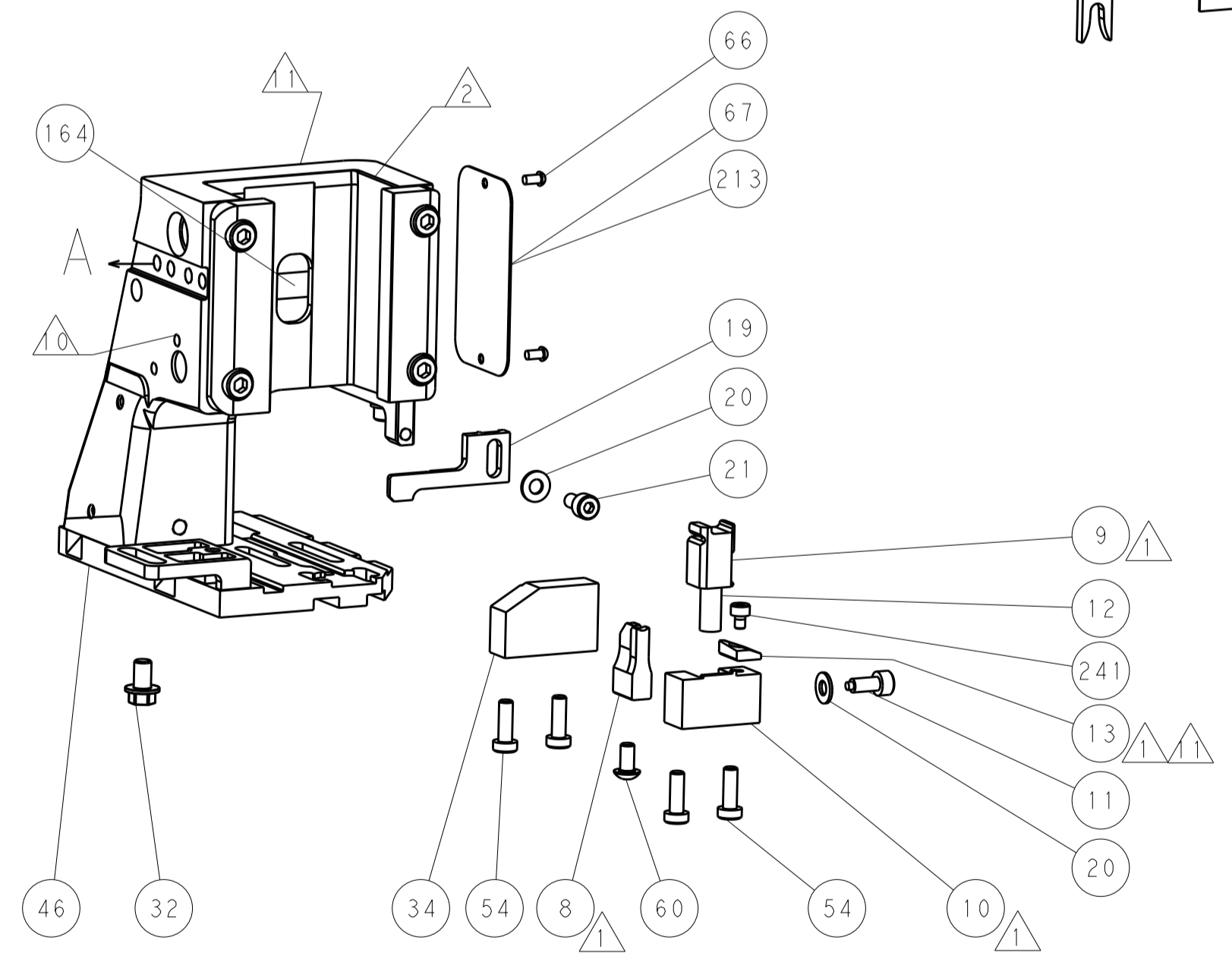
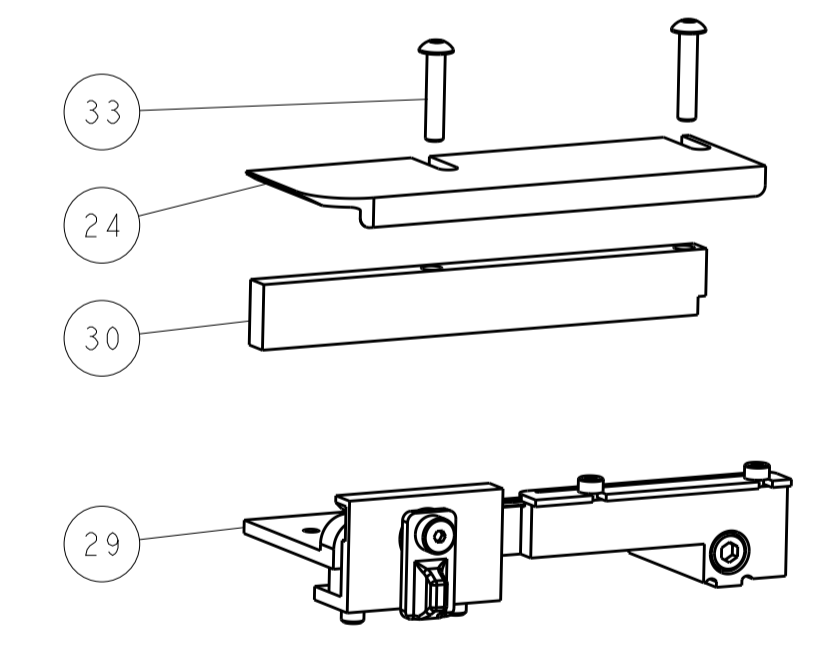
SERVO LATCH PLATE



CAM POSITIONS



TERMINAL SUPPORT LOCATION



ITEM 30 LOCATED AT REAR HOLES

FEED TRACK POSITION GUIDE BY INSULATION BARREL

ATLANTIC VERSION
 Shown on sheets 1 of 4 & 2 of 4
 (Pacific version shown on sheets 3 of 4 & 4 of 4)

DIMENSIONS:		TOLERANCES UNLESS OTHERWISE SPECIFIED:		DWN: H. HUANG 31MAY2012		TE Connectivity	
mm	0 PLC ±	1 PLC ±	2 PLC ±	3 PLC ±	4 PLC ±	Harrisburg, PA 17105-3608	
MATERIAL:		FINISH:		CHK: S. XI 31MAY2012		NAME: Ocean Side Feed Applicator	
				APVD: S. XI 31MAY2012		RESTRICTED TO:	
				PRODUCT SPEC:		SIZE: A1	
				APPLICATION SPEC:		CAGE CODE: 00779	
				WEIGHT:		DRAWING NO: 2151448	
				Customer Accessible Production Drawing		SCALE: 1:2 SHEET 2 OF 4 REV B	

PACIFIC VERSION TERMINATOR INTERFACE ADAPTER	PART NUMBER	REVISION	DESCRIPTION	FEED TYPE	APPLICATOR STYLE CONVERSION CHART						
					CONVERT TO	PART NUMBERS REQUIRED					
	2-2151448-1	B	FINE CRIMP HEIGHT ADJUST	MECHANICAL	PNEUMATIC FEED	2119950-1	1338685-1	5-18022-5	2119641-2	2119799-1	2063440-1
					SERVO LATCH PLATE	2119951-1	-	8-2151448-5	1901094-3	-	2168400-6 (QUANTITY 2)
					SMART APPLICATOR	2161326-1	-	8-2151448-4	-	-	-
	2-2151448-2	B	FINE CRIMP HEIGHT ADJUST	PNEUMATIC	MECHANICAL FEED	2119949-1	1338685-1	5-18022-5	2119653-2	-	-
					SERVO LATCH PLATE	2119951-1	-	8-2151448-5	1901094-3	-	2168400-6 (QUANTITY 2)
					SMART APPLICATOR	2161326-1	-	8-2151448-4	-	-	-
	2-2151448-5	B	FINE CRIMP HEIGHT ADJUST	SERVO LATCH PLATE	MECHANICAL FEED	2119949-1	1338685-1	5-18022-5	2119653-2	-	-
					PNEUMATIC FEED	2119950-1	1338685-1	5-18022-5	2119641-2	2119799-1	2063440-1
	2-2151448-7	B	FINE CRIMP HEIGHT ADJUST	NONE	-	-	-	-	-	-	-
	7-2151448-7	A	CRIMP TOOLING KIT	-	-	-	-	-	-	-	-

APPLICATOR DATA		
CRIMP SIZE	TYPE	
WIRE 2.50 mm [.098]	F	
INSUL 4.30 mm [.169]	O	
APPLICATOR INSTRUCTIONS 408-10389		

TERMINAL DATA: MOLEX TERMINAL MOLEX CRIMP SPECIFICATION			
TERMINAL NAME: TERMINAL, FEMALE RECEPTACLE			
WIRE STRIP LENGTH 4.20-5.00 mm [1.65-.197 IN]		INSULATION DIAMETER RANGE Ø2.87-3.53 mm [1.113-.139 IN]	
TERMINAL APPLICATION SPECIFICATION 63900-8200 Rev B			
TERMINALS APPLIED			
TE TERMINAL	MOLEX TERMINAL	TE TERMINAL	MOLEX TERMINAL
2025308-1	19420-0001	1949405-2	19420-0003

TERMINAL DATA: MOLEX TERMINAL MOLEX CRIMP SPECIFICATION			
TERMINAL NAME: MALE PIN TERMINAL			
WIRE STRIP LENGTH 4.20-5.00 mm [1.65-.197 IN]		INSULATION DIAMETER RANGE Ø2.87-3.53 mm [1.113-.139 IN]	
TERMINAL APPLICATION SPECIFICATION 63900-8200 Rev B			
TERMINALS APPLIED			
TE TERMINAL	MOLEX TERMINAL	TE TERMINAL	MOLEX TERMINAL
2113009-1	19417-0011	2113009-3	19417-0027
2113009-2	19417-0025	2113009-4	19417-0029

WIRE SIZE	CRIMP HEIGHT mm [INCH]	CRIMP HEIGHT REFERENCE SETTING
14 AWG OR 2.00mm2	1.50+/-0.05 [1.059+/-0.02]	6.7
16 AWG OR 1.27mm2	1.45+/-0.05 [1.057+/-0.02]	7.1

WIRE SIZE	CRIMP HEIGHT mm [INCH]	CRIMP HEIGHT REFERENCE SETTING
14 AWG OR 2.00mm2	1.70+/-0.05 [1.067+/-0.02]	5.1
16 AWG OR 1.27mm2	1.65+/-0.05 [1.065+/-0.02]	5.2

- RECOMMENDED SPARE PARTS
- GREASE BEARING SURFACES LIGHTLY
- 3. LUBRICATE DAILY PER THE APPLICATOR INSTRUCTION SHEET SUPPLIED WITH THE APPLICATOR.
- APPLICATOR SPECIFIC DATA TO BE ENTERED INTO BLANK MEMORY CHIP AT ASSEMBLY. SEE BELOW FOR PART NUMBER:
 MECHANICAL FEED WITH "SMART APPLICATOR" CONVERSION: 8-2151448-4
 PNEUMATIC FEED WITH "SMART APPLICATOR" CONVERSION: 8-2151448-4
 SERVO FEED WITH "FINE CRIMP HEIGHT ADJUST": 8-2151448-5
- 5. ADJUSTMENT OF THE STRIPPER MAY BE REQUIRED WHEN MOVING THE APPLICATOR BETWEEN BENCH AND LEADMAKER APPLICATIONS.
- APPLY PART NUMBER 1-23419-5 LOCTITE TO THREADS OF ITEM 62.
 APPLY PART NUMBER 2-23419-6 LOCTITE TO THREADS OF ITEM 242.
- GREASE THREADS, GROOVE AND O-RING ON ITEMS 139 & 152.
- MAGNET MUST BE ORIENTED CORRECTLY IN ORDER TO PROPERLY ACTUATE THE COUNTER.
- CRIMP HEIGHT REFERENCE SETTING WAS THE SETTING USED WHEN THE APPLICATOR WAS QUALIFIED AT THE FACTORY. ADJUSTMENT MAY BE NECESSARY WHEN RUNNING APPLICATOR IN THE FIELD.
- SPARE FEED CAM STORAGE LOCATION REFER TO INSTRUCTION SHEET FOR ADDITIONAL INFORMATION.
- TO CONVERT THE APPLICATOR TO A NON-CARRIER CUTTING STYLE, REMOVE ITEM 13 AND ATTACH TO THE LOCATION ON BACK SIDE OF THE HOUSING. REFER TO INSTRUCTION SHEET FOR ADDITIONAL INFORMATION.
- TERMINAL LUBRICANT IS RECOMMENDED.

***WARNING**
 ON INSTALLATION, SET WIRE DISC, ITEM 40 TO LARGEST WIRE SIZE SETTING. USE OF SETTINGS BELOW MINIMUM REQUIRED CRIMP HEIGHT SETTING WILL CAUSE DAMAGE TO CRIMP TOOLING.

PACIFIC VERSION
 Shown on sheets 3 of 4 & 4 of 4
 (Atlantic version shown on sheets 1 of 4 & 2 of 4)

SET UP GAUGE	LOC	DIST	REVISIONS			
2119599-1	A	66	REV	DATE	BY	APPD
			-	SEE SHEET 1	-	-

-	1	1	1	1	2119782-1	FINE ADJUST HEAD ASM, PACIFIC STYLE	251
-	-	-	1	-	2119640-1	PUSH ROD, AIR FEED	250
-	-	-	1	-	1803259-1	BUSHING, FLANGED	249
-	1	1	1	1	1-22279-3	SPRING, COMPRESSION	246
-	1	1	1	1	2119082-4	CAM, SNAIL, INSULATION ADJUSTMENT	244
-	1	1	1	1	2079764-1	WASHER, WAVE SPRING, CREST-TO-CREST	243
-	1	1	1	1	2119083-1	RETAINER, INSULATION DIAL	242
-	1	1	1	1	7-18023-7	SCR, SKT HD CAP M3 X 4.0	241
-	-	2	-	-	2168400-6	SHCS, LOW HEAD, RoHS, M5 X 16	240
-	-	-	-	1	2119580-1	MECHANICAL FEED ASSEMBLY	239
-	-	-	-	1	2063440-1	AIR FEED MODULE	238
-	-	1	-	-	2119740-2	TAG, IDENTIFICATION	213
-	-	1	-	-	1901094-3	SPACER, FEEDER	198
-	-	-	2	-	21045-3	RING, RETAIN, EXTERN, 3/16 CRESCENT	172
-	1	1	1	1	994969-1	MAGNET, RARE EARTH HIGH ENERGY	166
-	REF	REF	REF	REF	994970-2	COUNTER, MAGNETIC	164
-	-	-	1	-	240638-1	SPRING, FEED FINGER	163
-	1	1	1	1	8-21084-1	O-RING, .801 ID, .070 DIA, MAT.	152
-	-	-	1	-	2119641-2	FEED CAM, AIR FEED	151
-	1	1	1	1	2119798-2	DETENT PIN	145
-	1	1	1	1	2079383-8	SCR, BHSC, RoHS (M4 X 16)	144
-	4	4	4	4	2168400-5	SHCS, LOW HEAD, RoHS, M4 X 20	143
-	-	-	-	1	2119653-2	FEED CAM, POST FEED	142
-	1	1	1	1	1-2119656-0	APPLICATOR BASIC ASSEMBLY, SF	141
-	1	1	1	1	2119650-1	RAM, ASIAN STYLE, SIDE FEED	140
-	1	1	1	1	2119092-2	BOLT, ADJUSTMENT	139
-	-	-	1	-	3-23627-7	PIN, RETAIN, GRVD, 3/16 X .854	137
-	-	-	1	-	2119799-1	HOLDER, FEED FINGER, AF	136
-	-	REF	-	-	SEE NOTE 4	MEMORY CHIP, PROGRAMMED	135
-	-	1	-	-	1633743-1	SERVO FEED LATCH ASM	133
-	-	REF	-	-	2119944-1	FEED FINGER ASSEMBLY, SF	117
-	1	1	1	1	2119955-1	ASSY, LUBRICATOR, SIDE FEED	113
-	1	1	1	1	455888-5	SPACER, CRIMPER	82
-	1	1	1	1	2119956-1	DOCUMENTATION PACKAGE	71
-	1	-	1	1	2119740-1	TAG, IDENTIFICATION	67
-	2	2	2	2	2168078-1	SCREW, DRIVE, RH, RoHS, 2 x .188	66
-	1	1	1	1	2119793-1	LIMITER, ADJUSTMENT BOLT	63
-	3	3	3	3	992763-5	SCR, SET, SOC, CONE POINT, M3 X 4.0	62
-	-	-	1	1	5-18022-5	SCR, HEX HD CAP, M4 X 6.0	59
-	-	-	1	1	1338685-1	PAWL, FEED	56
-	2	2	2	2	2168083-8	SCR, SKT HD CAP, RoHS, M4 X 16	53
-	1	1	1	1	5018030-1	NUT, HEX, REG, RoHS, M3	52
-	1	1	1	1	811242-5	BUMPER, HOLD DOWN	51
-	1	1	1	1	690753-2	SPACER, TONKER	50
-	-	-	1	2	18023-9	SCR, SKT HD CAP M4 X 6.0	49
-	-	-	-	1	2119652-1	FEED CAM, PRE FEED	48
-	1	1	1	1	2079383-7	SCR, BHSC, RoHS (M8 X 25)	41
-	1	1	1	1	2119645-1	DISC, NUMBERED FA WIRE ADJUSTMENT	40
-	1	1	1	1	2119957-1	APPLICATOR SHIM PACK	39
-	1	1	1	1	1-2119644-2	RAM WASHER, PRECISION	38
-	1	1	1	1	5-1752356-1	SUPPORT, TERMINAL	34
-	2	2	2	2	2079383-5	SCR, BHSC, RoHS (M4 X 20)	33
-	1	1	1	1	2161328-1	HEX HEAD, FLANGED, M5 X 8mm LONG	32
-	1	1	1	1	1-1320908-0	SPACER, STRIP GUIDE	30
-	1	1	1	1	2119959-1	ASSEMBLY, STRIP GUIDE	29
-	1	1	1	1	455888-3	SPACER, CRIMPER	28
-	1	1	1	1	1320928-6	STRIP GUIDE	24
-	1	1	1	1	2168083-2	SCR, SKT HD CAP, RoHS, M4 X 8.0	21
-	2	2	2	2	1-18028-2	WASHER, FLAT, REG M4	20
-	1	1	1	1	2119533-1	STRIPPER, SIDE FEED	19
-	1	1	1	1	2119806-1	INSERT, SHEAR	13
-	1	1	1	1	3-22280-3	SPRING, COMPRESSION	12
-	1	1	1	1	1-356885-4	STOP, SHEAR	11
-	1	1	1	1	2119805-1	SHEAR HOLDER, FRONT	10
-	1	1	1	1	462006-6	FLOATING SHEAR, FRONT	9
-	1	1	1	1	1-1633620-6	ANVIL, COMBINATION	8
-	1	1	1	1	2-240641-9	SPACER	7
-	-	-	-	-	-	-	6
-	1	1	1	1	1-2119757-0	DEPRESSOR, SHEAR	5
-	1	1	1	1	238011-2	BLOCK, CRIMPER SPACER	4
-	1	1	1	1	3-1633965-2	CRIMPER, INSULATION O PREMIUM	3
-	1	1	1	1	455888-5	SPACER, CRIMPER	2
-	1	1	1	1	1633588-1	CRIMPER, WIRE	1

DIMENSIONS:		TOLERANCES UNLESS OTHERWISE SPECIFIED:		DRAWING NO		RESTRICTED TO	
mm	0 PLC ±	1 PLC ±	2 PLC ±	3 PLC ±	4 PLC ±	ANGLES ±	FINISH ±
MATERIAL				WEIGHT		SCALE	
Customer Accessible Production Drawing				SCALE 1:2		SHEET 3 OF 4	

LOC		DIST		REVISIONS			
A	66	P	LTM	DESCRIPTION	DATE	OWN	APVD
		-	-	SEE SHEET 1	-	-	-

FEED TYPE MECHANICAL



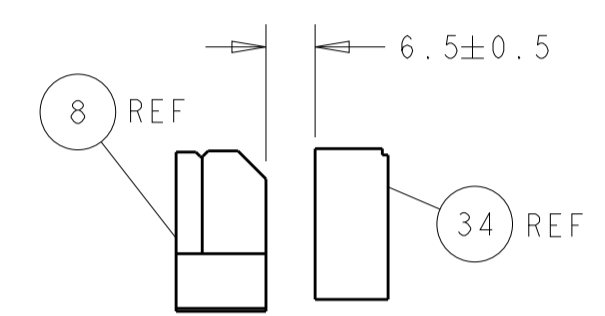
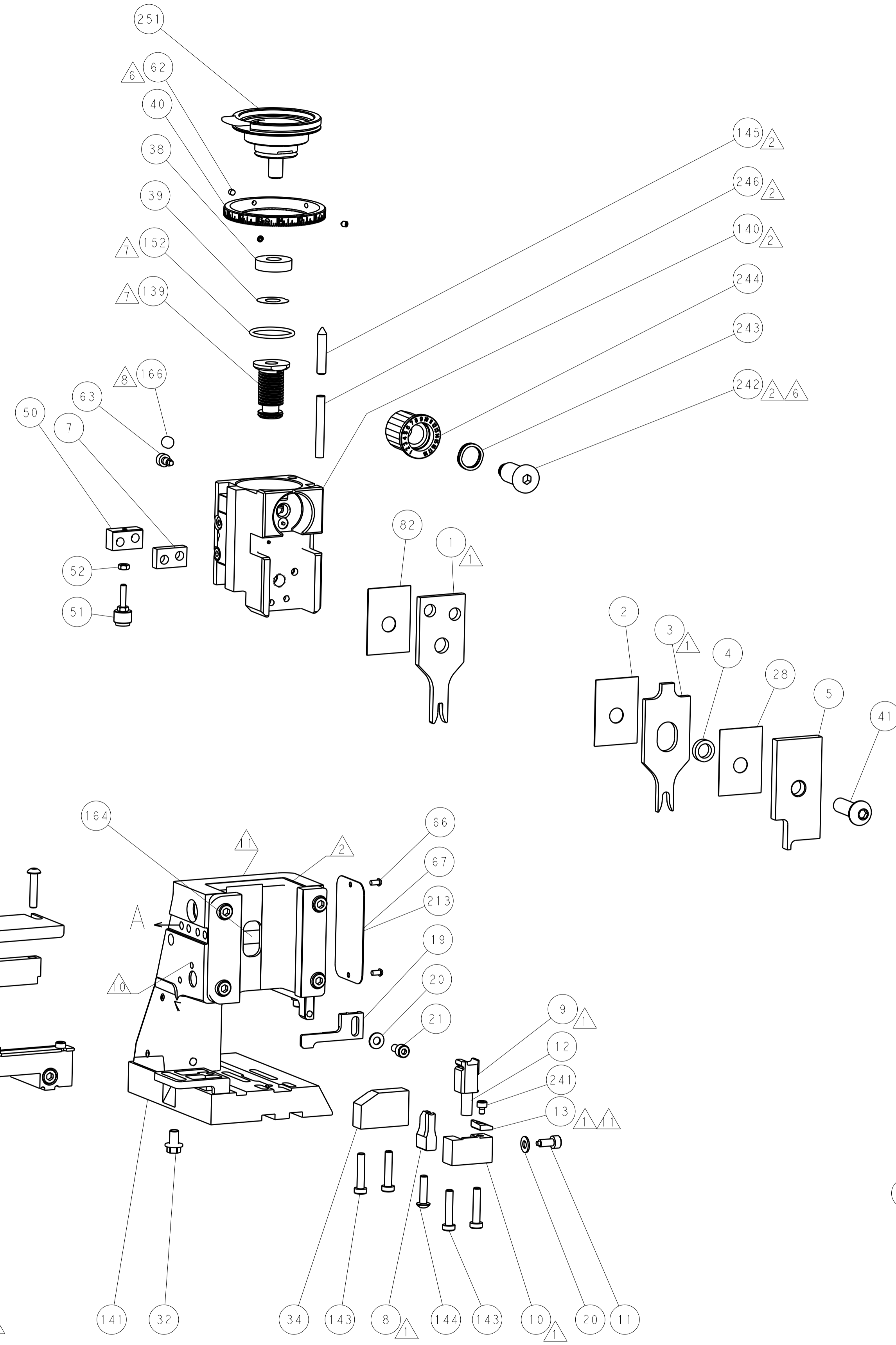
PNEUMATIC



SERVO LATCH PLATE

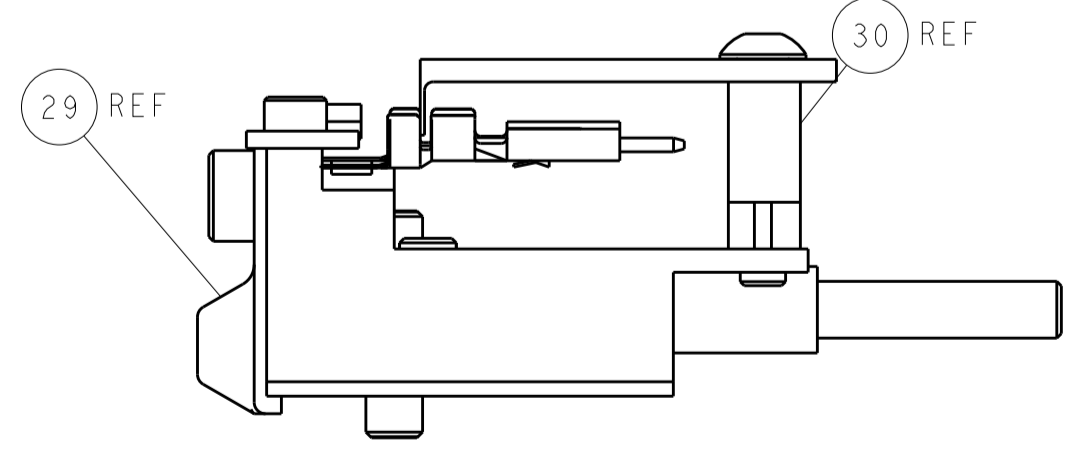


CAM POSITIONS



TERMINAL SUPPORT LOCATION

ITEM 30 LOCATED AT REAR HOLES



FEED TRACK POSITION GUIDE BY INSULATION BARREL

PACIFIC VERSION
 Shown on sheets 3 of 4 & 4 of 4
 (Atlantic version shown on sheets 1 of 4 & 2 of 4)

DIMENSIONS:		TOLERANCES UNLESS OTHERWISE SPECIFIED:		DWN: R. HUANG 31MAY2012		CHK: -		APVD: S. XI 31MAY2012		NAME: Ocean Side Feed Applicator	
mm	0 PLC	±		SIZE	CAGE CODE	DRAWING NO	RESTRICTED TO	STE TE Connectivity Harrisburg, PA 17105-3608			
	1 PLC	±		A1		00779	©=2151448	Customer Accessible Production Drawing			
	2 PLC	±		SCALE		1:2	SHEET 4 OF 4		REV B		
	3 PLC	±									
	4 PLC	±									
	ANGLES	±									
MATERIAL	FINISH										