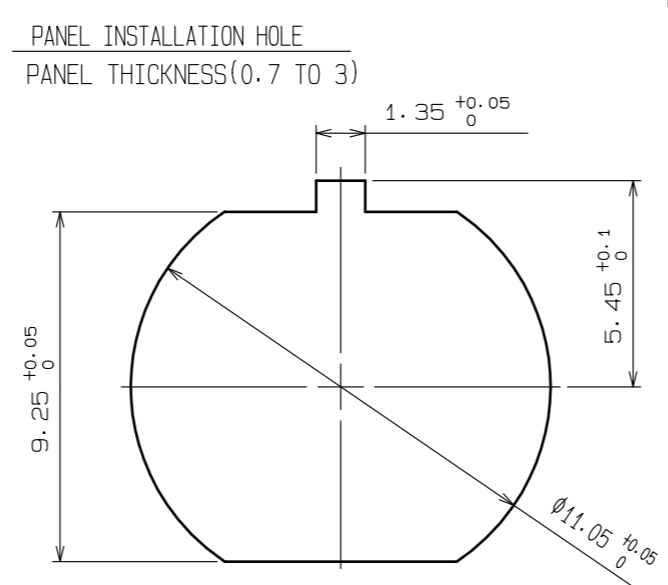
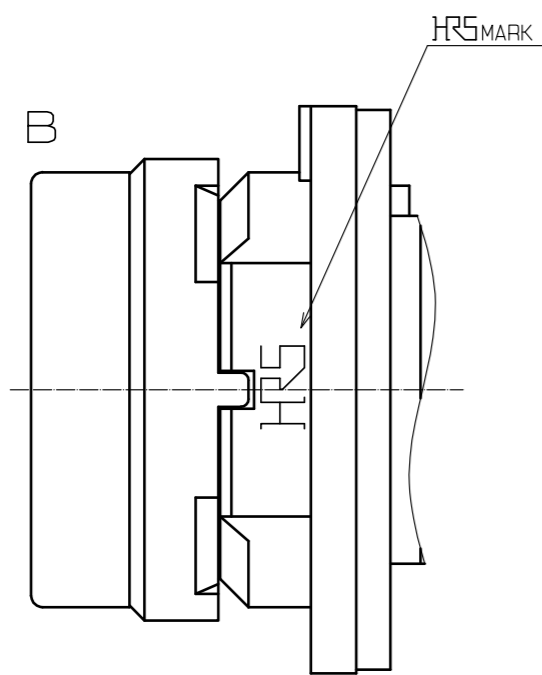
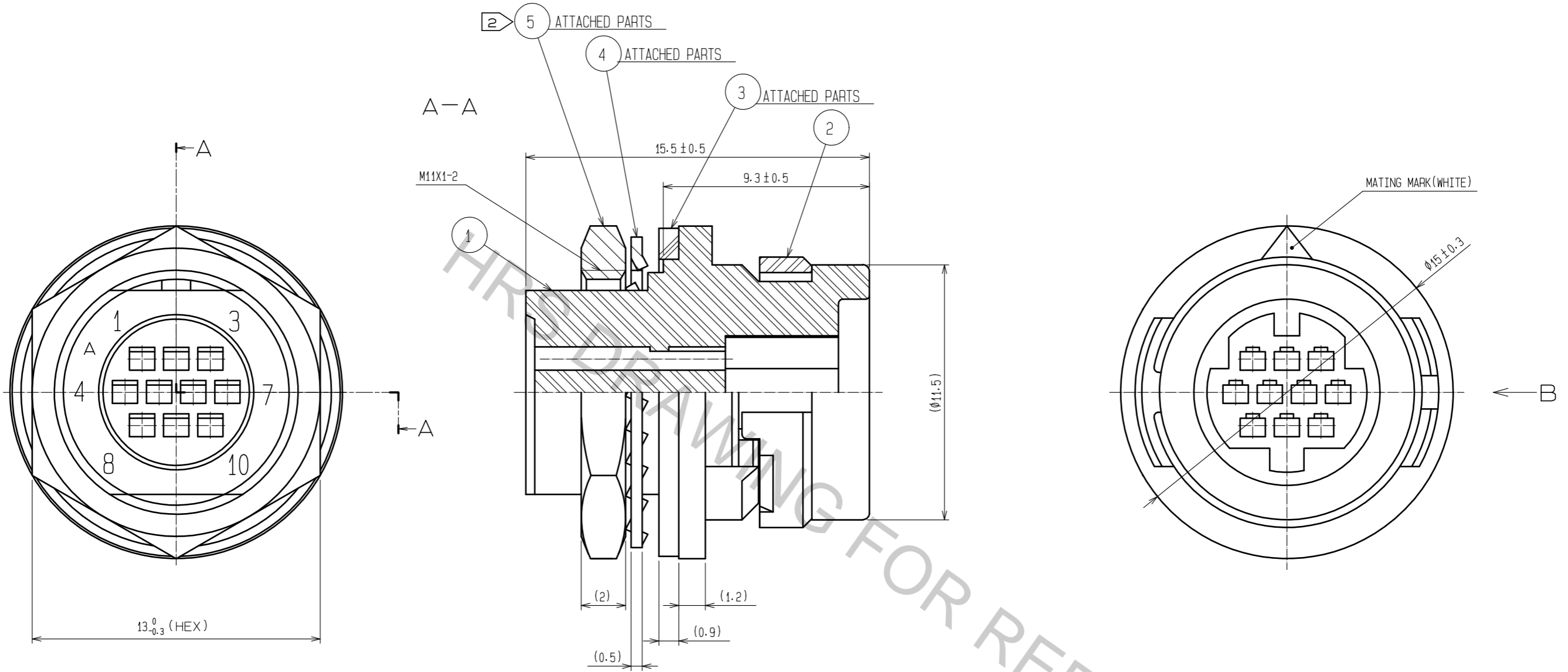


Aug.1.2018 Copyright 2018 HIROSE ELECTRIC CO., LTD. All Rights Reserved.
 In case that the application demands a high level of reliability, such as automotive,
 please contact a company representative for further information.



NOTES 1 APPLICABLE CRIMPING CONTACT:HR30-PC-211
 (APPLICABLE WIRE: 26 TO 30 AWG WIRE JACKET DIAMETER:Ø1 MAX)
 APPLICABLE CRIMP CONTACT EXTRACTION TOOL:HR30-TP
 2 THE RECOMMENDED CLUMP TORQUE OF REF. NO.5 TO BE 0.8N·m.
 LOCTITE 263, LOCPRIMER 7649, ROCTITE JAPAN IS RECOMMENDED TO PREVENT REF. NO.5 FROM LOOSENING.

NO.	MATERIAL	FINISH	REMARKS	NO.	MATERIAL	FINISH	REMARKS
3	CR	(BLACK)		5	BRASS	NICKEL PLATING	
2	PPS	(BLACK)	UL94V-0	4	PHOSPHOR BRONZE	NICKEL PLATING	
1	PPS	(BLACK)	UL94V-0				

UNITS	SCALE	COUNT	DESCRIPTION OF REVISIONS	DESIGNED	CHECKED	DATE
mm	5 : 1	1				

APPROVED	: HY. KOBAYASHI	18.02.26	DRAWING NO.	EDC-112154-31-00
CHECKED	: HY. KOBAYASHI	18.02.26	PART NO.	HR30-7R-10PC(31)
DESIGNED	: DS. MATSUNE	18.02.26	CODE NO.	CL130-1012-5-31
DRAWN	: DS. MATSUNE	18.02.26		