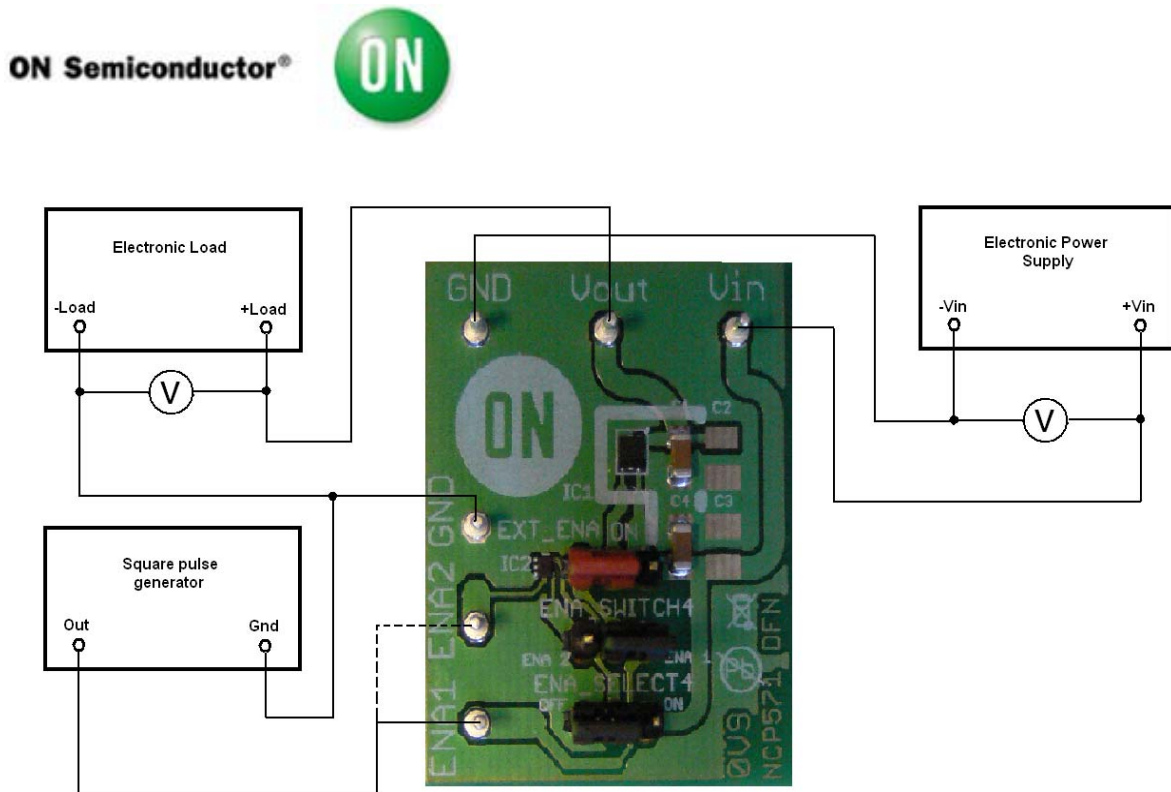


Test Procedure for NCP571 0V9 DFN6 LDO Demoboard



1. Enable pin connected to Vin

1. Check the position of jumper and correct it if necessary.

- a) **EXT_ENA** - ON
- b) **ENA_SELECT** - ENA1 or ENA2
- c) **POWER ENA2** - OFF

2. Connect the test setup as shown Figure 1

3. Apply an input voltage **V_{in} = 2.7 V**

4. Apply **I_{out} = 0mA** load.

5. Check that **V_{out}** is **0.9 V**.

6. Increase **I_{out}** up to **150 mA**

7. Increase **V_{in}** up to **12 V** and decrease the load in accordance with **SOA**

8. Power down the Load

9. Power down the **V_{cc}**

10. End of test

